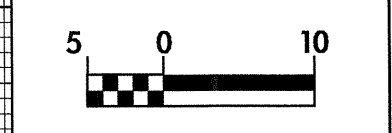


# RAMP -B- (EXIST. NC 16)



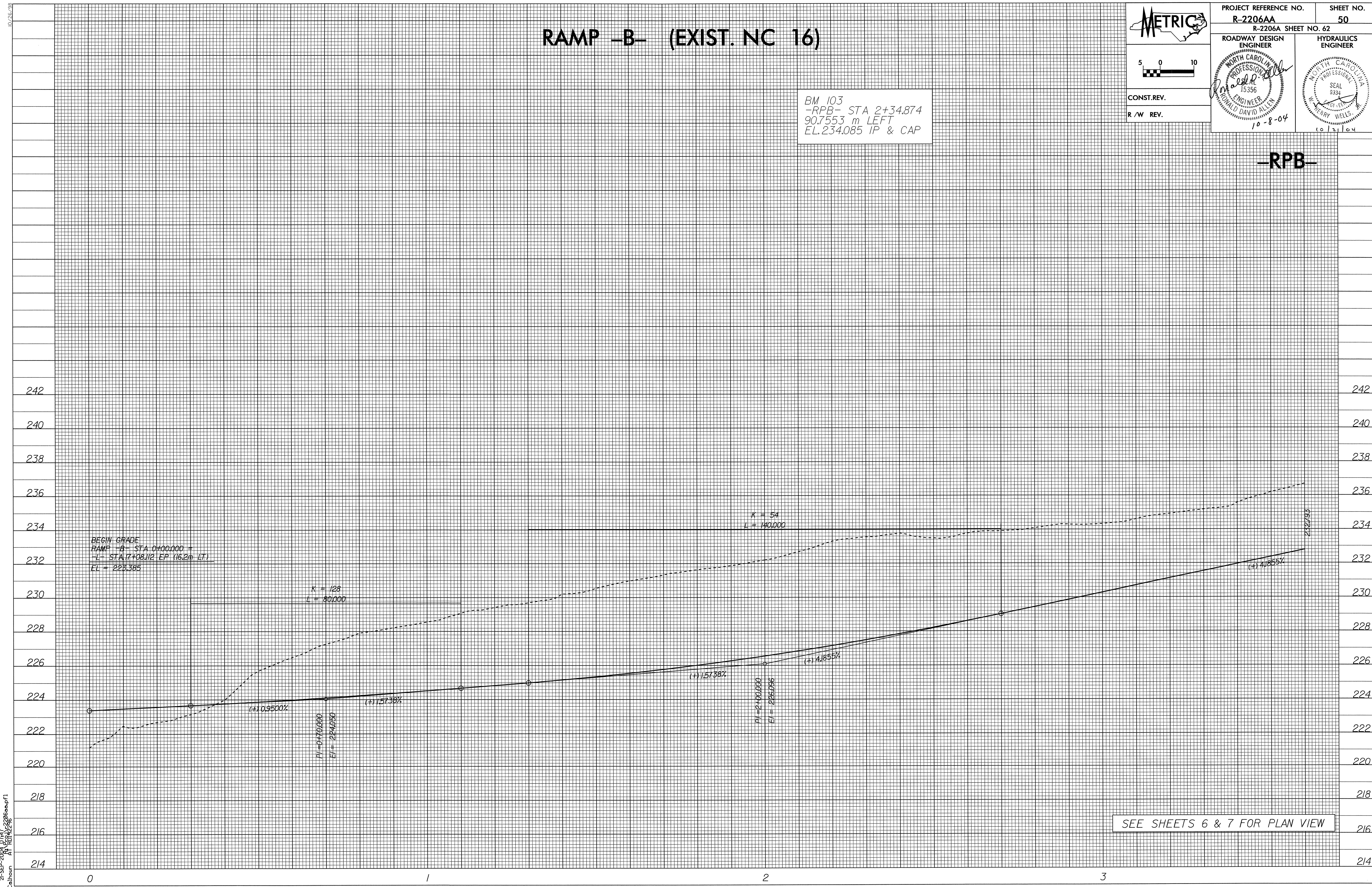
PROJECT REFERENCE NO. R-2206AA	SHEET NO. 50
R-2206AA SHEET NO. 62	
ROADWAY DESIGN ENGINEER 15356 10-8-04	HYDRAULICS ENGINEER 10/2/04



CONST. REV.  
R /W REV.

BM 103  
-RPB- STA 2+34.874  
90.7553 m LEFT  
EL. 234.085 IP & CAP

-RPB-



SEE SHEETS 6 & 7 FOR PLAN VIEW

21-SEP-2004 07:47  
SEC\alhou rd-09oce34