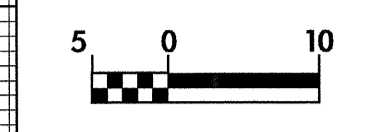


RAMP -CA- (EXIST. NC 16)

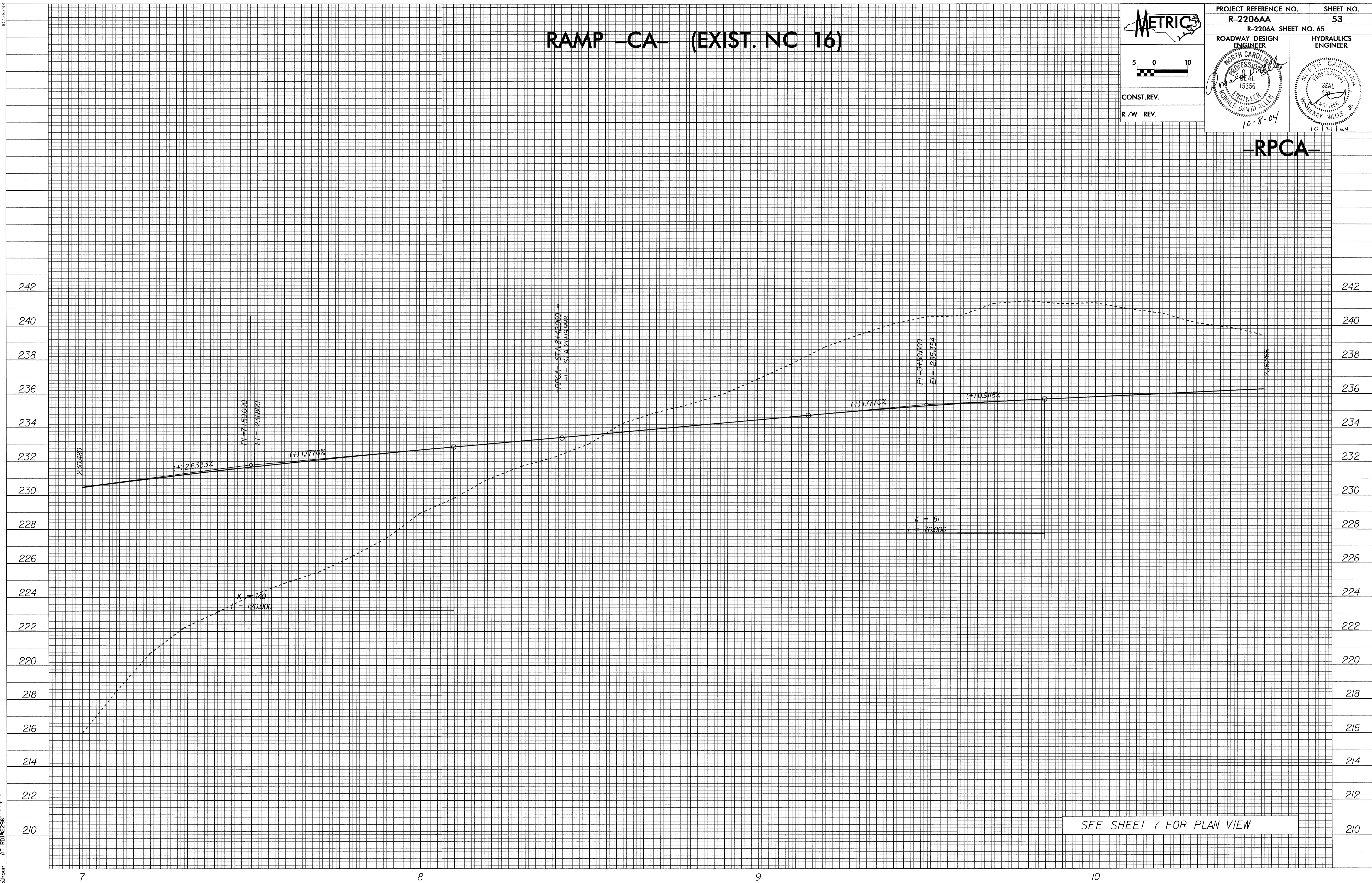


PROJECT REFERENCE NO. R-2206AA	SHEET NO. 53
R-2206A SHEET NO. 65	
ROADWAY DESIGN ENGINEER ROYAL DAVID ALLEN 15356 10-8-04	HYDRAULICS ENGINEER HENRY WELLS, JR. 1012164



CONST. REV.
R / W REV.

-RPCA-



SEE SHEET 7 FOR PLAN VIEW

10/26/08
 21-SEP-2004 07:46
 SEC:calhoun rd-09oce34