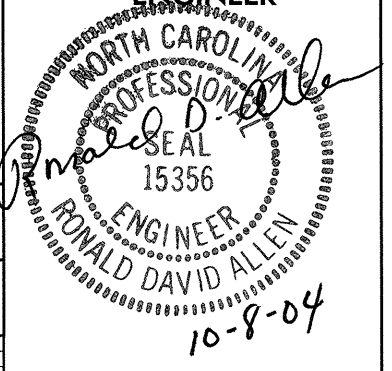
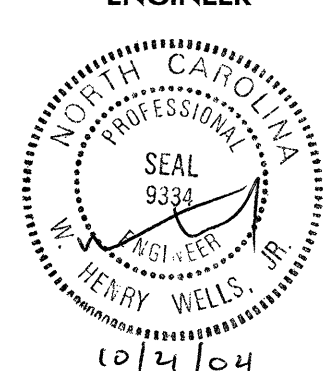
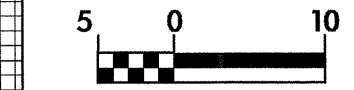


RAMP -CA- (EXIST. NC 16)

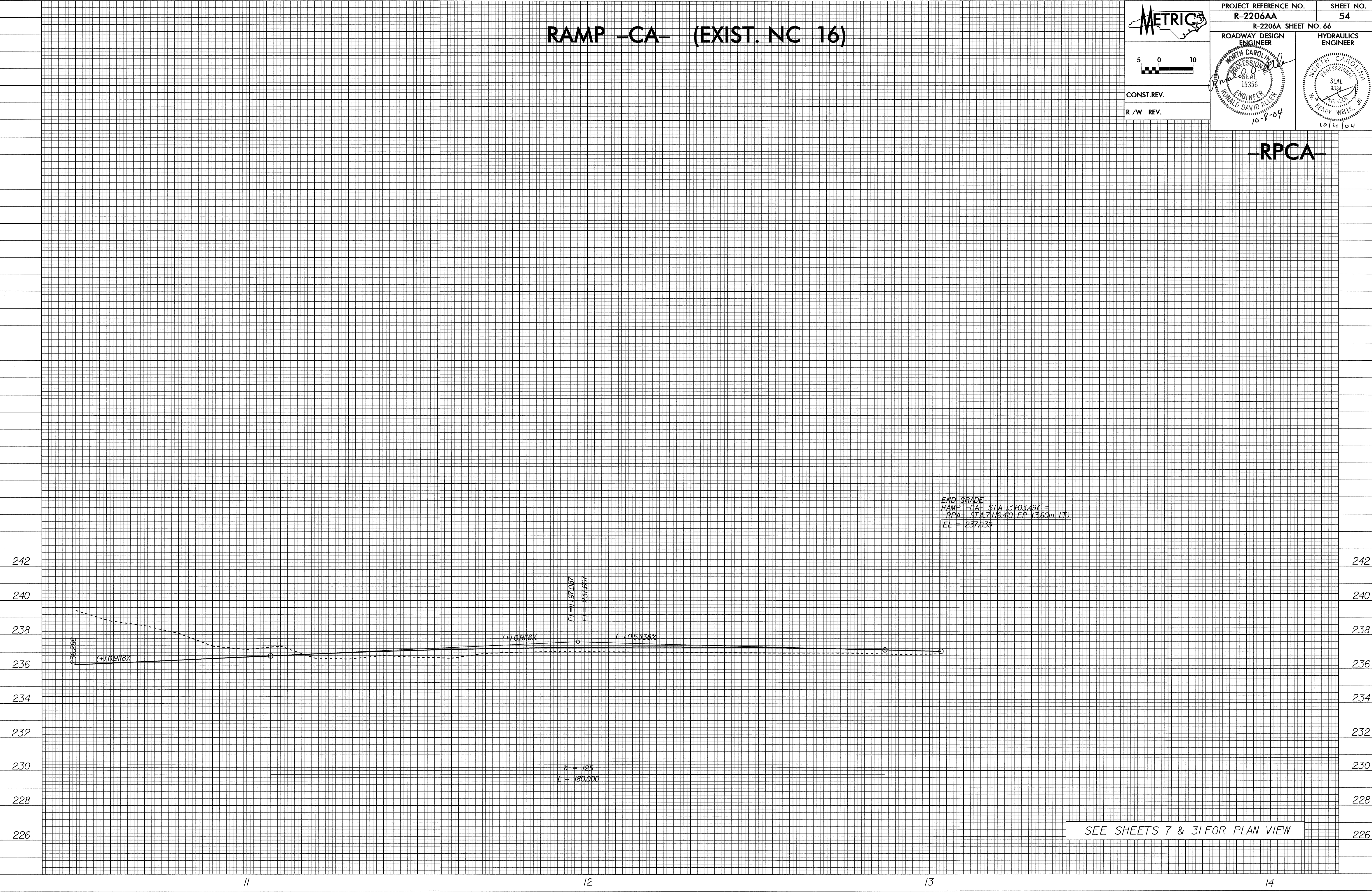


PROJECT REFERENCE NO. R-2206AA	SHEET NO. 54
R-2206A SHEET NO. 66	
ROADWAY DESIGN ENGINEER	HYDRAULICS ENGINEER
 NORTH CAROLINA PROFESSIONAL ENGINEER SEAL 15356 DAVID ALLEN 10-8-04	 NORTH CAROLINA PROFESSIONAL ENGINEER SEAL 9884 HENRY WELLS 10/14/04
CONST. REV.	
R /W REV.	



RPCA

10/26/08
21-SEP-2004 07:46
SECalhoun At R0142366.p1



SEE SHEETS 7 & 31 FOR PLAN VIEW