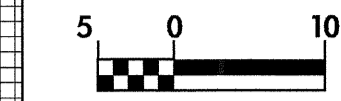


RAMP -BC- (EXIST. NC 16)

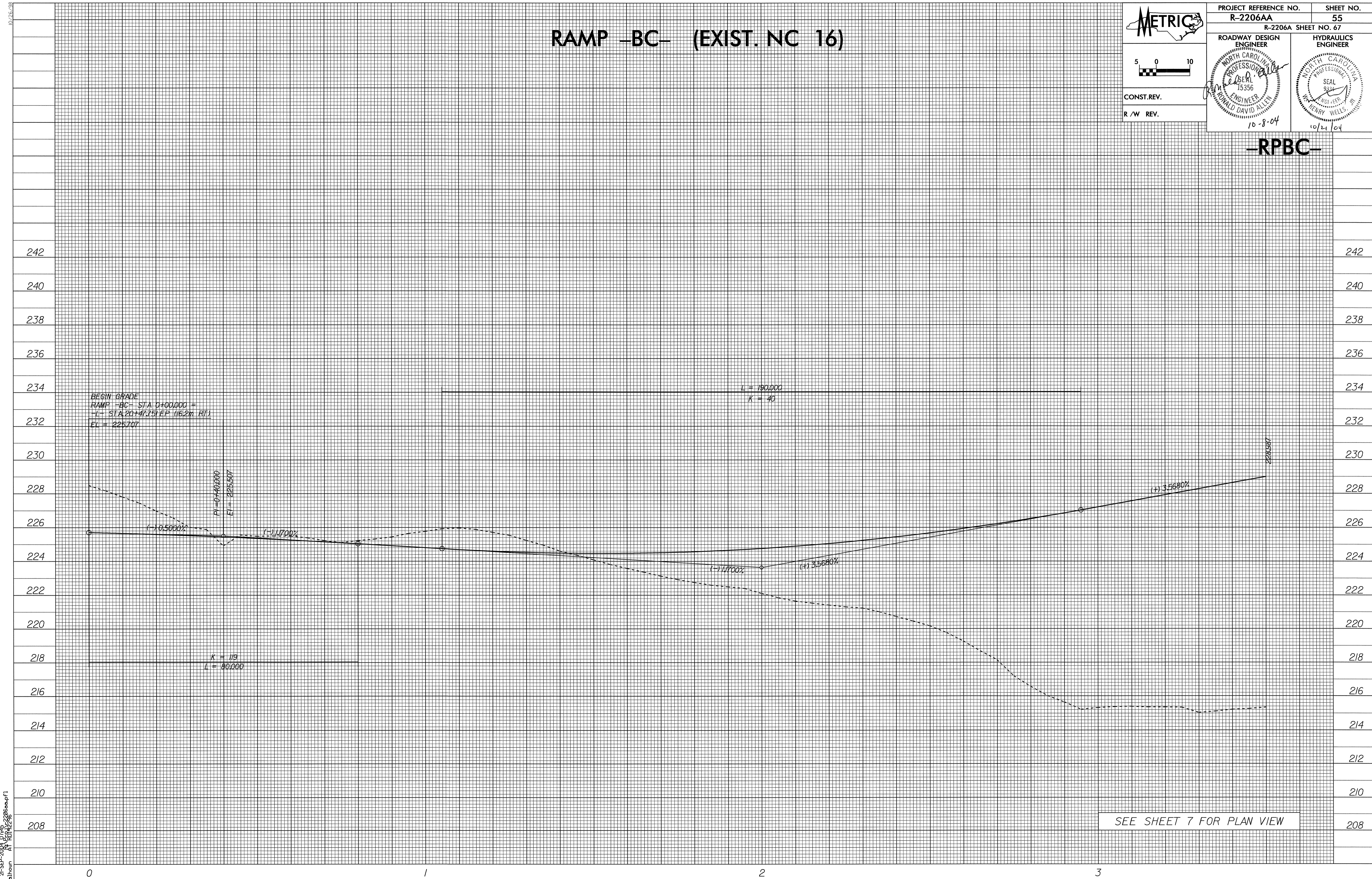


PROJECT REFERENCE NO. R-2206AA	SHEET NO. 55
R-2206A SHEET NO. 67	
ROADWAY DESIGN ENGINEER NORTH CAROLINA PROFESSIONAL SEAL 15356 RONALD DAVID HALLIN	HYDRAULICS ENGINEER NORTH CAROLINA PROFESSIONAL SEAL 9384 HENRY WELLS, III
10-8-04	
10/21/04	



CONST. REV.
R / W REV.

-RPBC-



21-SEP-2004 07:45
 SEC\alhou...