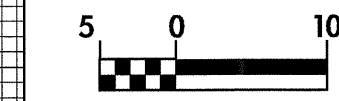


RAMP -BC- (EXIST. NC 16)

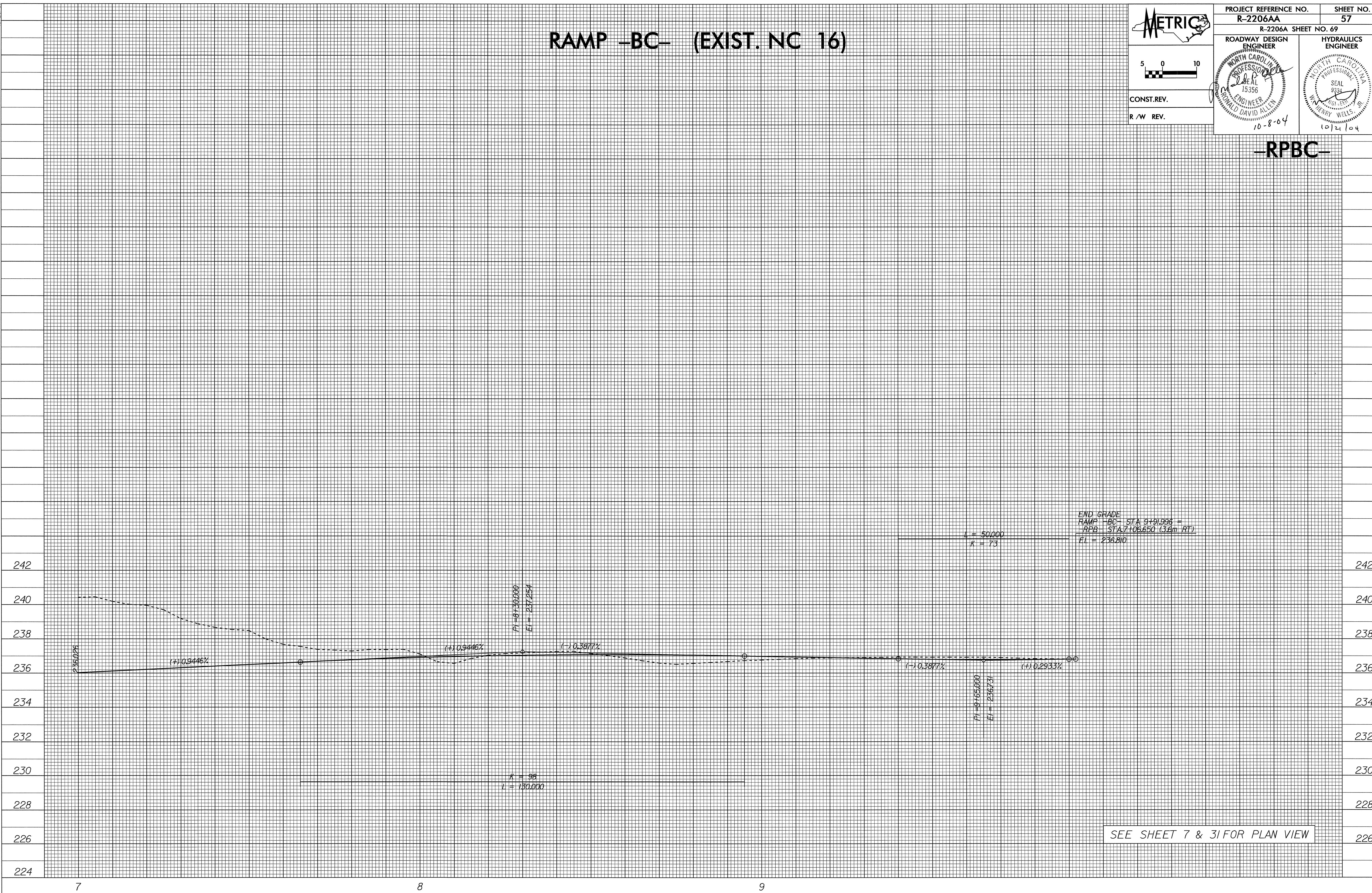


PROJECT REFERENCE NO. R-2206AA		SHEET NO. 57
R-2206A SHEET NO. 69		
ROADWAY DESIGN ENGINEER	HYDRAULICS ENGINEER	



CONST. REV.
R / W REV.

-RPBC-



END GRADE
RAMP -BC- STA 9+91.996 =
RPB- STA 7+106.650 (3.6m RT)
EI = 236.810

SEE SHEET 7 & 31 FOR PLAN VIEW

10/26/04
 30-SEP-2004 15:31
 SECalhoun rd-09oce34