

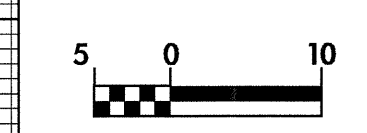
(NC 73)



PROJECT REFERENCE NO. R-2206AA SHEET NO. 61

R-2206A SHEET NO. 79

ROADWAY DESIGN ENGINEER: RICHARD DAVID ALLEN, SEAL 15356, 10-8-04
HYDRAULICS ENGINEER: W. HENRY WELLS, JR., SEAL 9304, 10-12-04

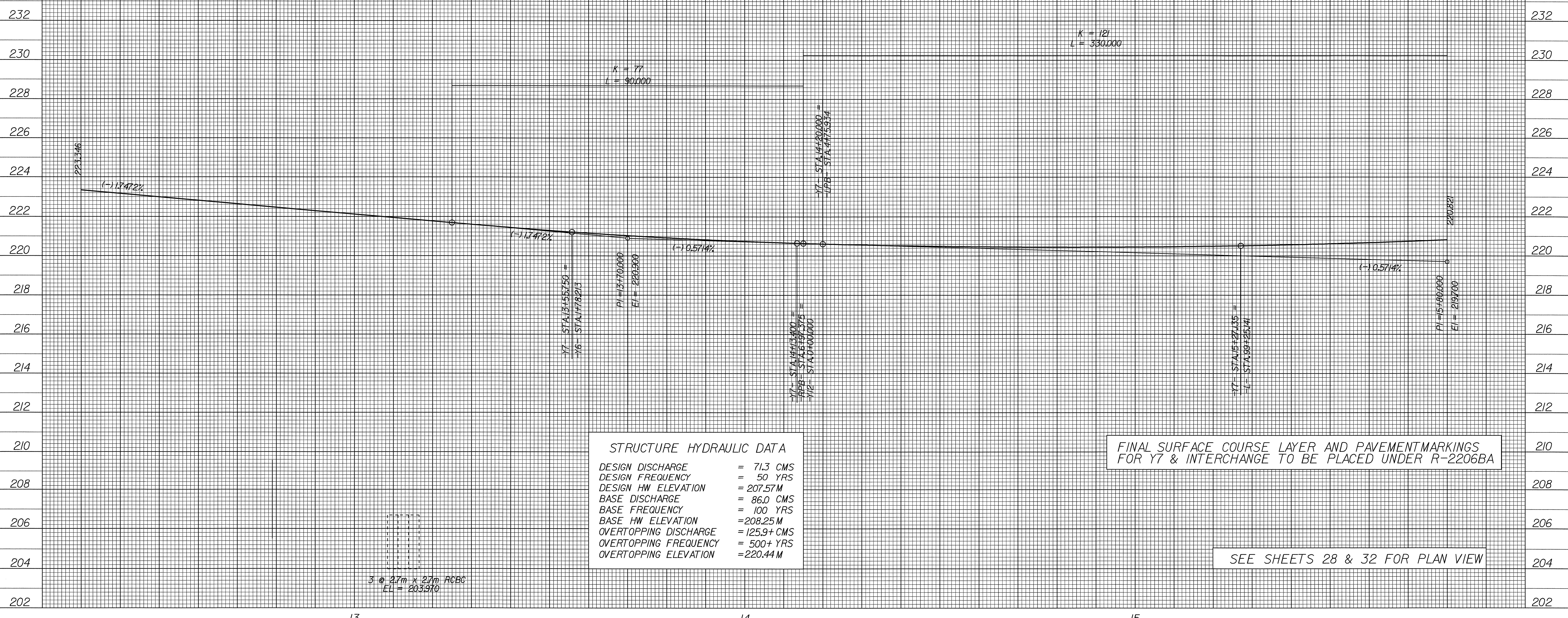


CONST. REV.
R / W REV.

-Y7-

BM R2206-II
-Y7- STA 13+93.762
S 9 58' 02.52" W 6.982m
EL. 218.844 IP & CAP (GPS)

BM 214
-Y7- STA 15+40.678
S 9 58' 02.52" W 5.305m
EL. 218.354 IP & CAP



STRUCTURE HYDRAULIC DATA

DESIGN DISCHARGE	= 71.3 CMS
DESIGN FREQUENCY	= 50 YRS
DESIGN HW ELEVATION	= 207.57M
BASE DISCHARGE	= 86.0 CMS
BASE FREQUENCY	= 100 YRS
BASE HW ELEVATION	= 208.25M
OVERTOPPING DISCHARGE	= 125.9+ CMS
OVERTOPPING FREQUENCY	= 500+ YRS
OVERTOPPING ELEVATION	= 220.44 M

FINAL SURFACE COURSE LAYER AND PAVEMENT MARKINGS FOR Y7 & INTERCHANGE TO BE PLACED UNDER R-2206BA

SEE SHEETS 28 & 32 FOR PLAN VIEW

3 @ 2.7m x 2.7m RCBC
EL = 203.970

30-SEP-2004 15:31
SECalhoun rd-09oce34

13

14

15