

-RPD- @ -Y7-

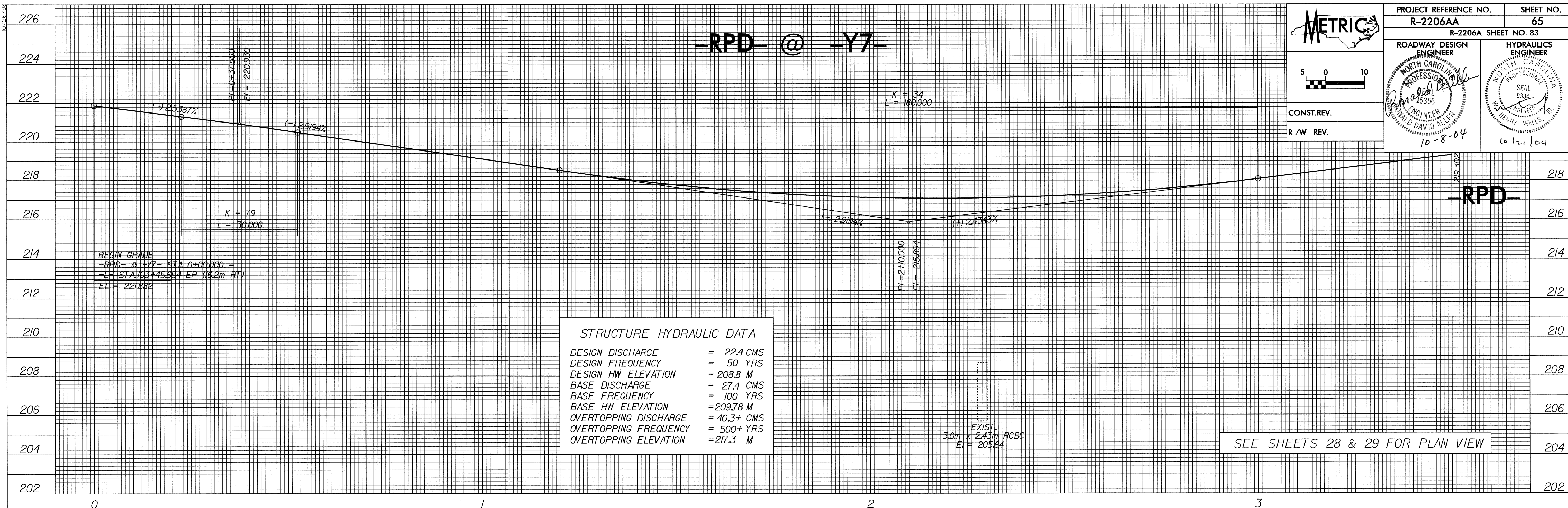
METRIC

PROJECT REFERENCE NO. R-2206AA SHEET NO. 65
R-2206A SHEET NO. 83

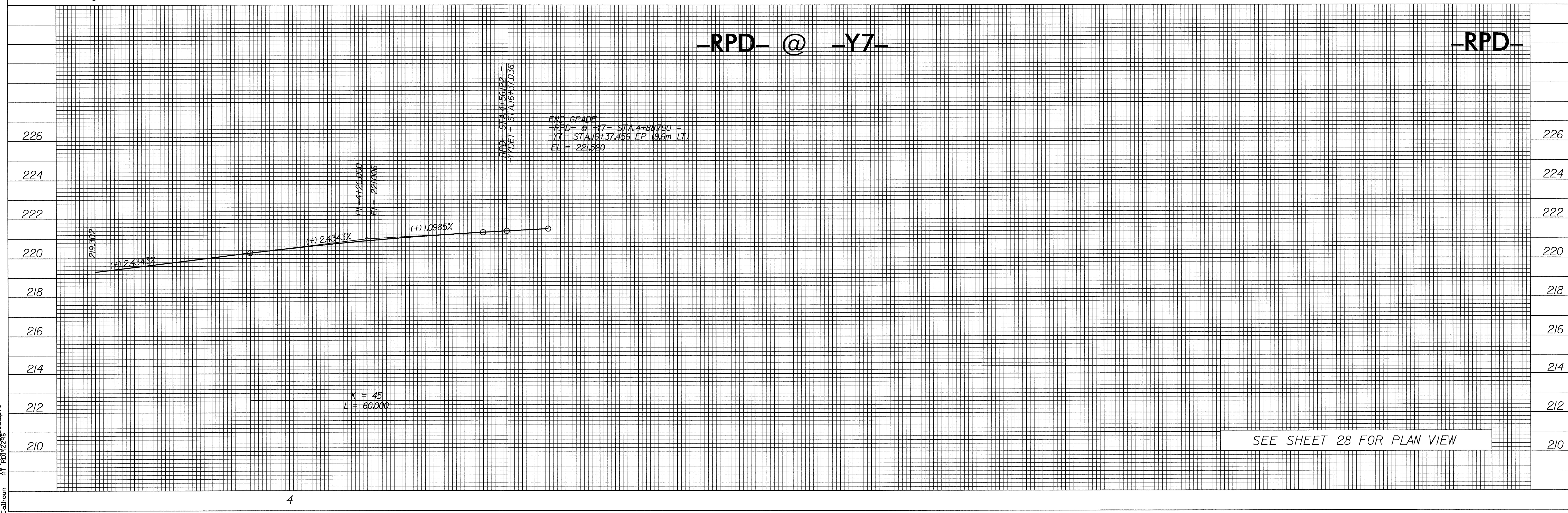
ROADWAY DESIGN ENGINEER: *David Allen* (Professional Seal 15356)
HYDRAULICS ENGINEER: *Henry Wells* (Professional Seal 9334)

CONST. REV. _____
R/W REV. _____

10-8-04



-RPD- @ -Y7-



21-SEP-2004 07:28
SECalhoun At 1001/280000.p1