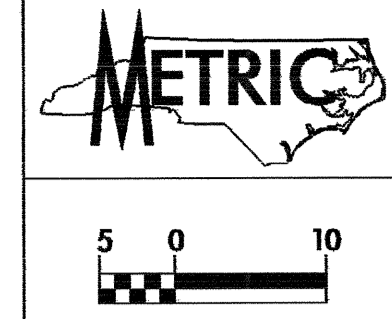
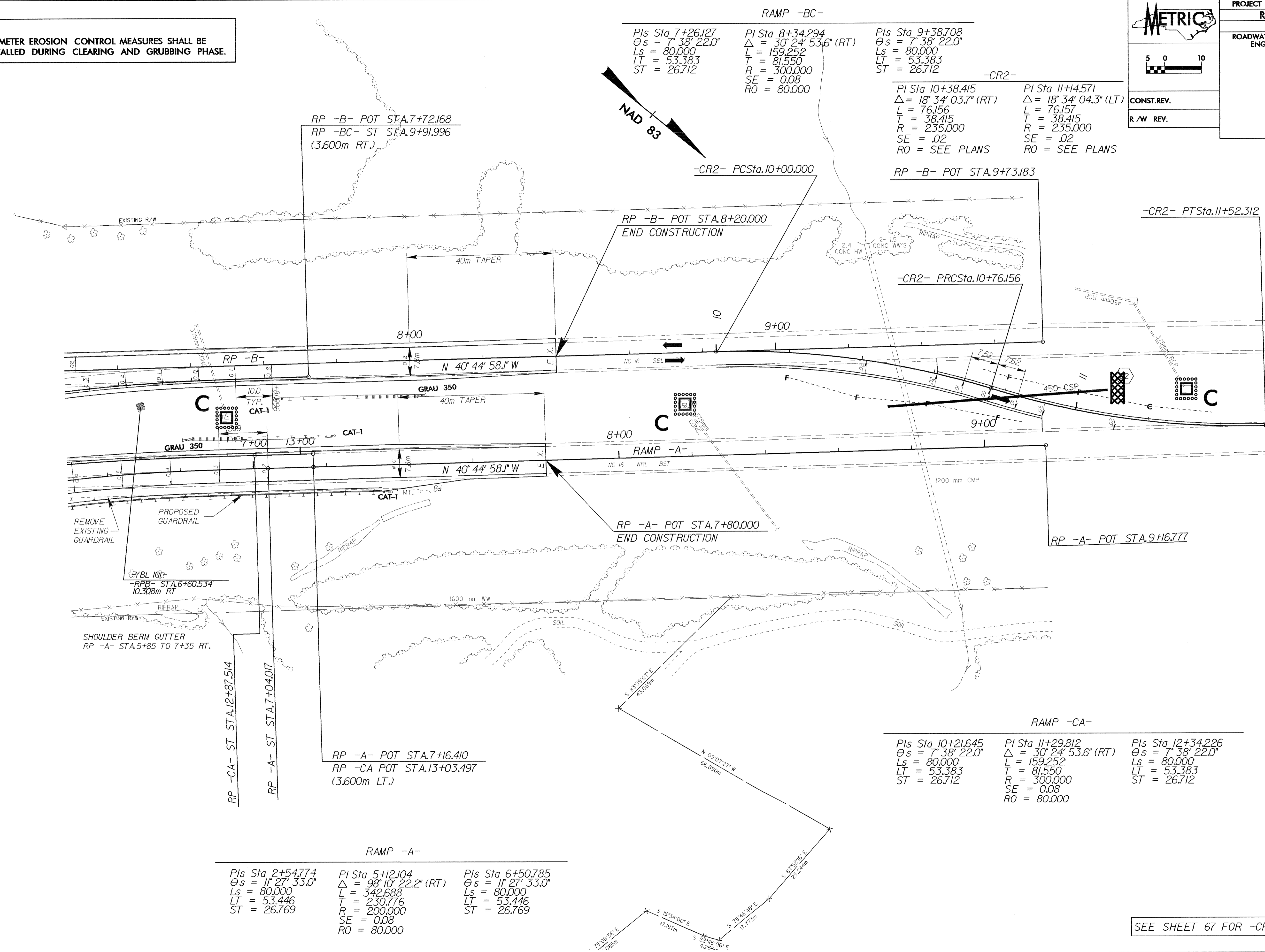


NOTE:
PERIMETER EROSION CONTROL MEASURES SHALL BE
INSTALLED DURING CLEARING AND GRUBBING PHASE.



PROJECT REFERENCE NO.	SHEET NO.
R-2206AA	EC-12/CONST.31A
R/W SHEET NO.	
ROADWAY DESIGN ENGINEER	HYDRAULICS ENGINEER
CONST. REV.	
R/W REV.	



RAMP -BC-

Pls Sta 7+26.127 θs = 7° 38' 22.0" Ls = 80.000 LT = 53.383 ST = 26.712	Pl Sta 8+34.294 Δ = 30° 24' 53.6" (RT) L = 159.252 T = 81.550 R = 300.000 SE = 0.08 RO = 80.000	Pls Sta 9+38.708 θs = 7° 38' 22.0" Ls = 80.000 LT = 53.383 ST = 26.712
--	---	--

-CR2-

Pl Sta 10+38.415 Δ = 18° 34' 03.7" (RT) L = 76.156 T = 38.415 R = 235.000 SE = .02 RO = SEE PLANS	Pl Sta 11+4.571 Δ = 18° 34' 04.3" (LT) L = 76.157 T = 38.415 R = 235.000 SE = .02 RO = SEE PLANS
---	--

RAMP -A-

Pls Sta 2+54.774 θs = 11° 27' 33.0" Ls = 80.000 LT = 53.446 ST = 26.769	Pl Sta 5+12.104 Δ = 98° 10' 22.2" (RT) L = 342.688 T = 230.776 R = 200.000 SE = 0.08 RO = 80.000	Pls Sta 6+50.785 θs = 11° 27' 33.0" Ls = 80.000 LT = 53.446 ST = 26.769
---	--	---

RAMP -CA-

Pls Sta 10+21.645 θs = 7° 38' 22.0" Ls = 80.000 LT = 53.383 ST = 26.712	Pl Sta 11+29.812 Δ = 30° 24' 53.6" (RT) L = 159.252 T = 81.550 R = 300.000 SE = 0.08 RO = 80.000	Pls Sta 12+34.226 θs = 7° 38' 22.0" Ls = 80.000 LT = 53.383 ST = 26.712
---	--	---

SEE SHEET 67 FOR -CROSSOVER 2- PROFILE