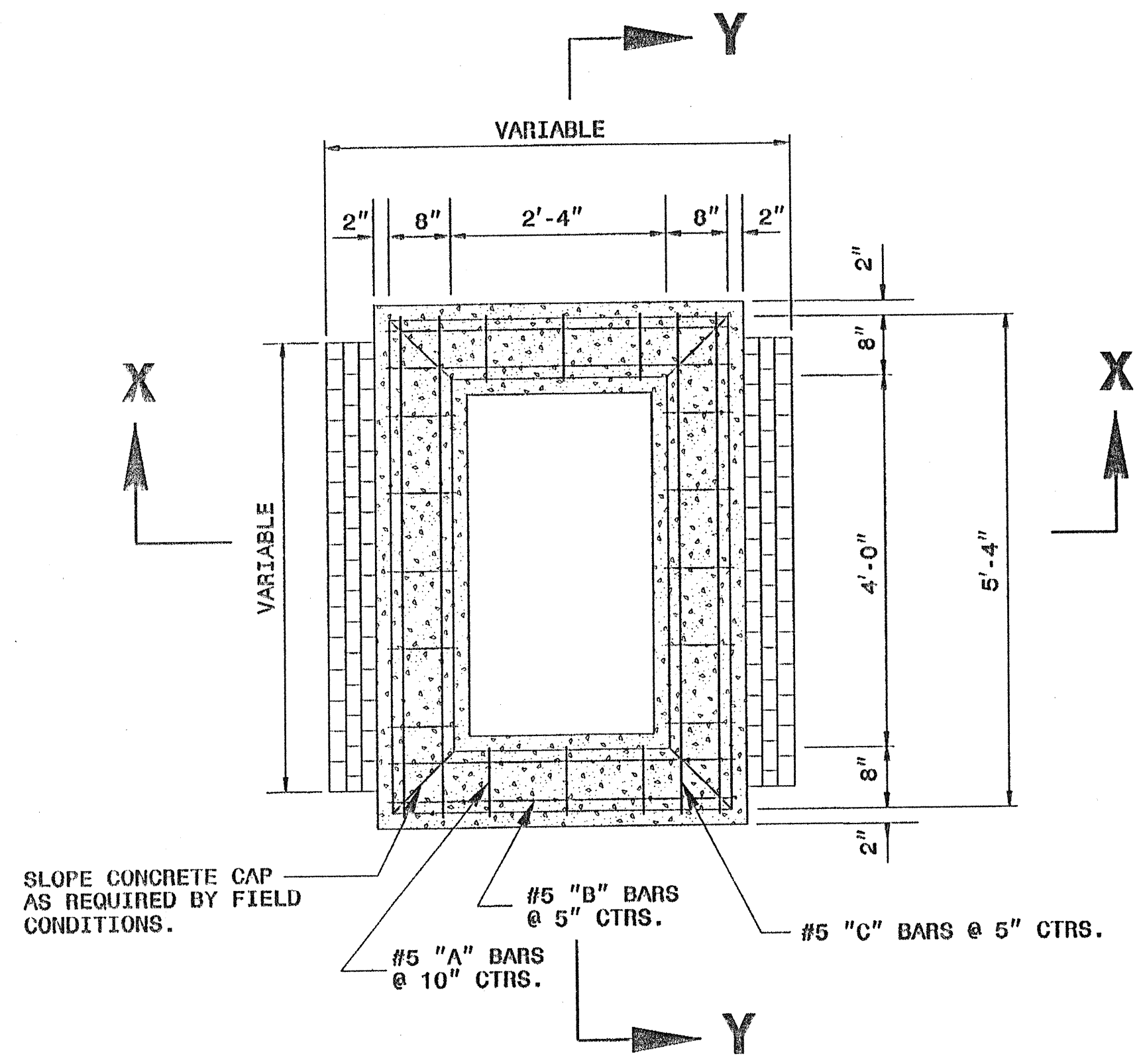
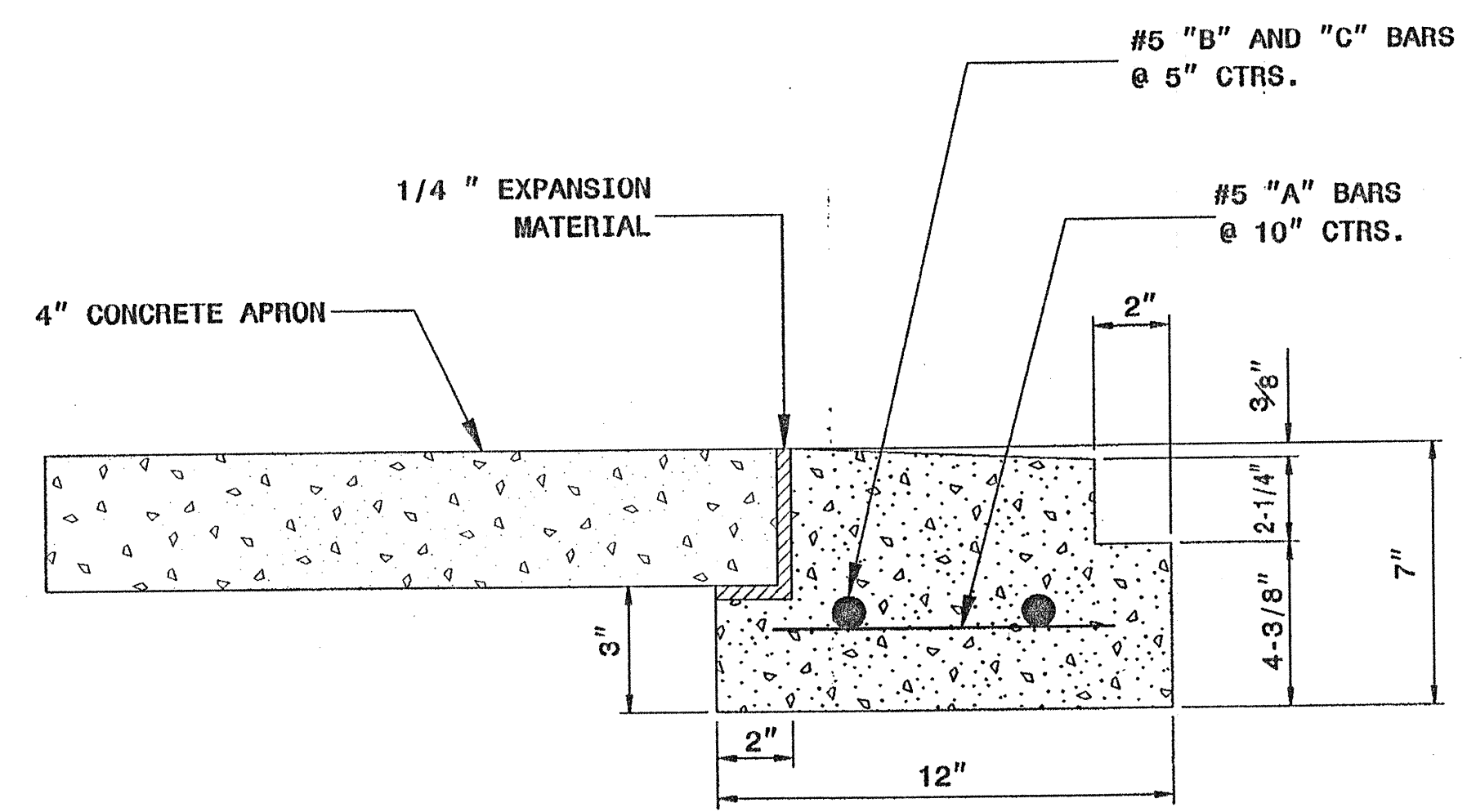


5/14/99



**PLAN VIEW
APRON NOT SHOWN**

NOTES:
 - USE CLASS 'B' CONCRETE.
 - DIMENSIONS MAY BE ADJUSTED TO SUIT FIELD CONDITIONS AS DIRECTED BY THE ENGINEER.

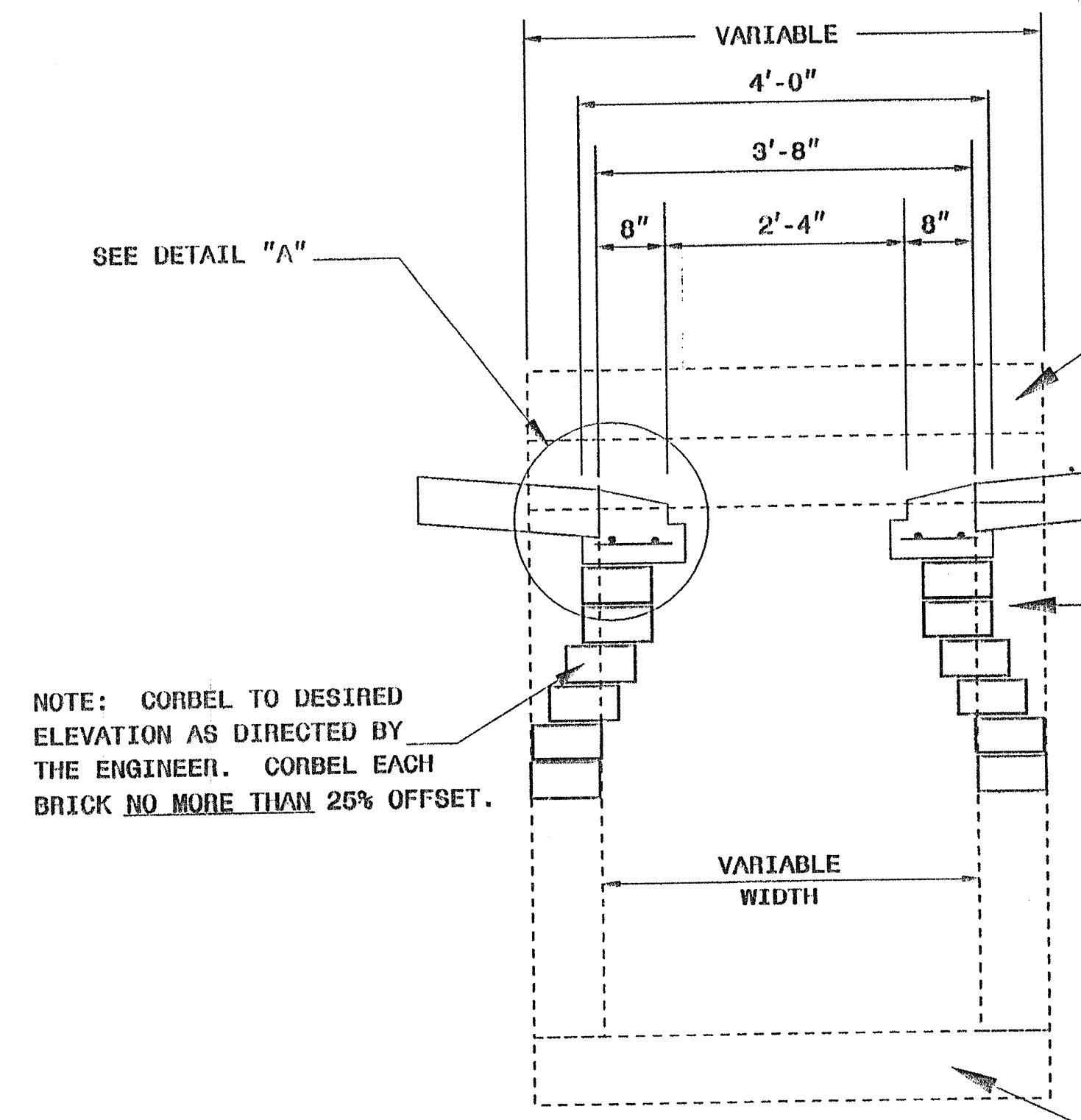


**DETAIL "A"
CONCRETE CAP WITH APRON**

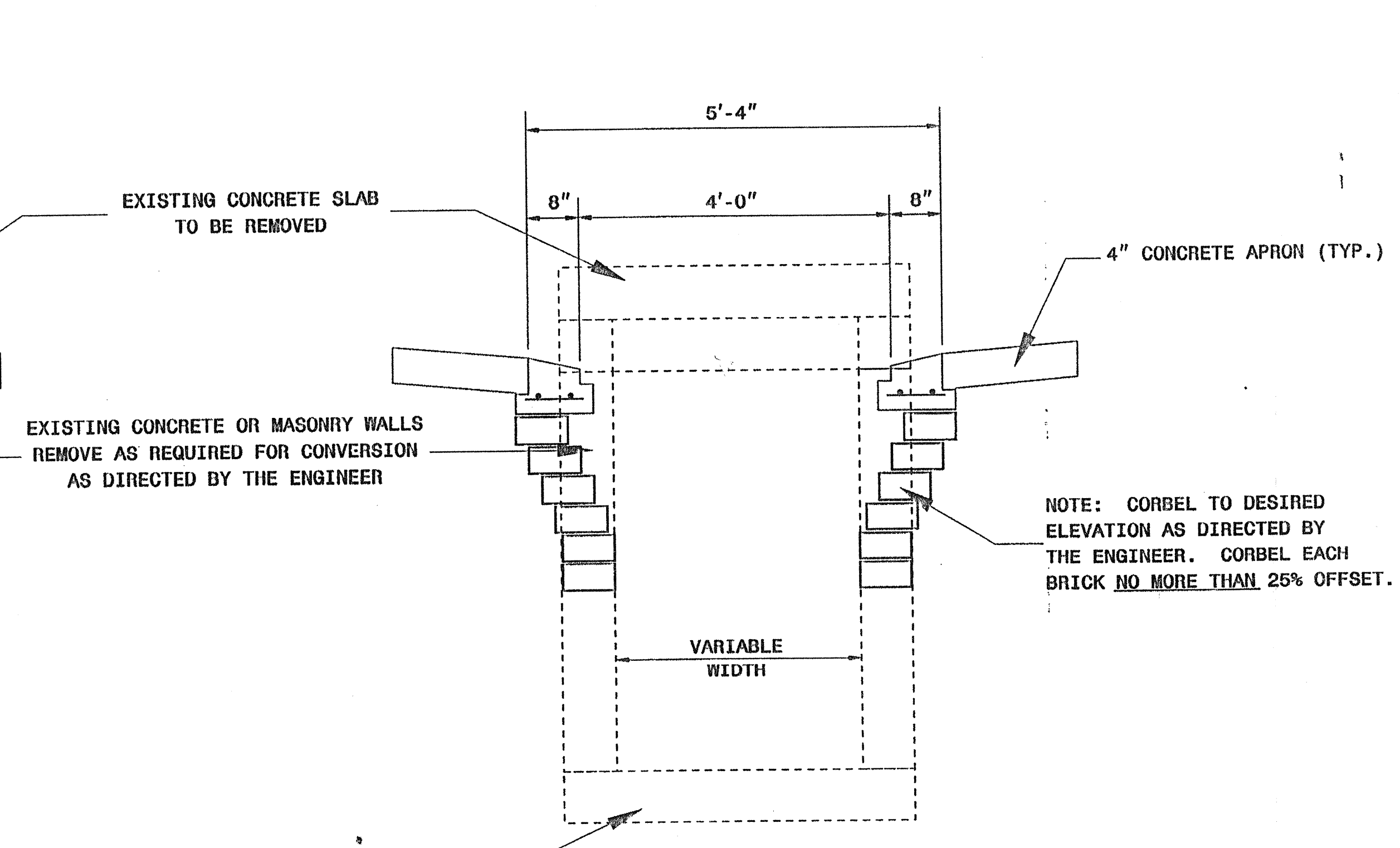
BILL OF MATERIAL

BAR	NO.	SIZE	LENGTH	WEIGHT
A	16	5	9"	13
B	4	5	3'-5"	14
C	4	5	5'-1"	21
TOTAL REINF. STEEL (lbs.)				48
BRICK MASONRY (per ft. ht.) (cu. yds.)				0.38
CLASS "B" CONC. (cu. yds.)				0.23

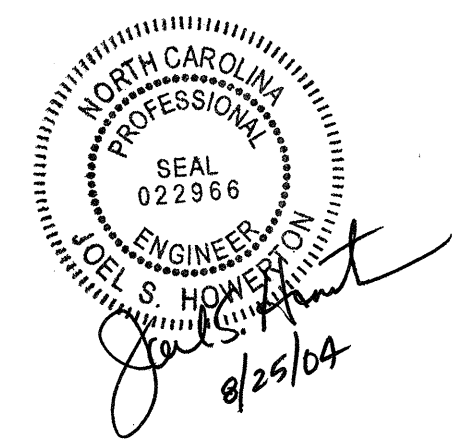
FRAME AND GRATES	STD. NO.
PREFERRED:	840.22
	840.24
ACCEPTABLE:	840.20
	840.29
	840.33



SECTION X-X



SECTION Y-Y



**DESIGN SERVICES UNIT
STANDARDS AND SPECIAL DESIGN**
 Office 919-250-4126 FAX 919-250-4119

**CONVERT EXISTING
OPEN THROAT CATCH BASIN
TO MEDIAN DROP INLET**

ORIGINAL BY: L.M. LEWIS DATE: 3/97
 MODIFIED BY: E.E. WARD DATE: 1/00
 CHECKED BY: [Signature] DATE: 2/00
 FILE SPEC.: dsl72:\usr\detail\stand\cbt2d1.dgn