
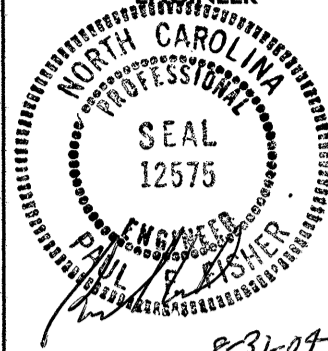
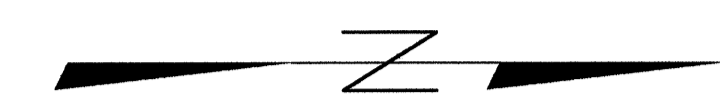


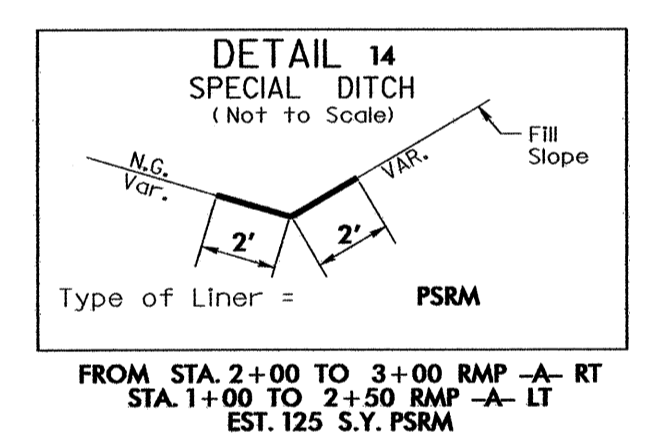
8/17/99

PROJECT REFERENCE NO. 1-2102	SHEET NO. 9
RW SHEET NO. 9	
ROADWAY DESIGN ENGINEER 	HYDRAULICS ENGINEER 
8-10-01	8-31-01

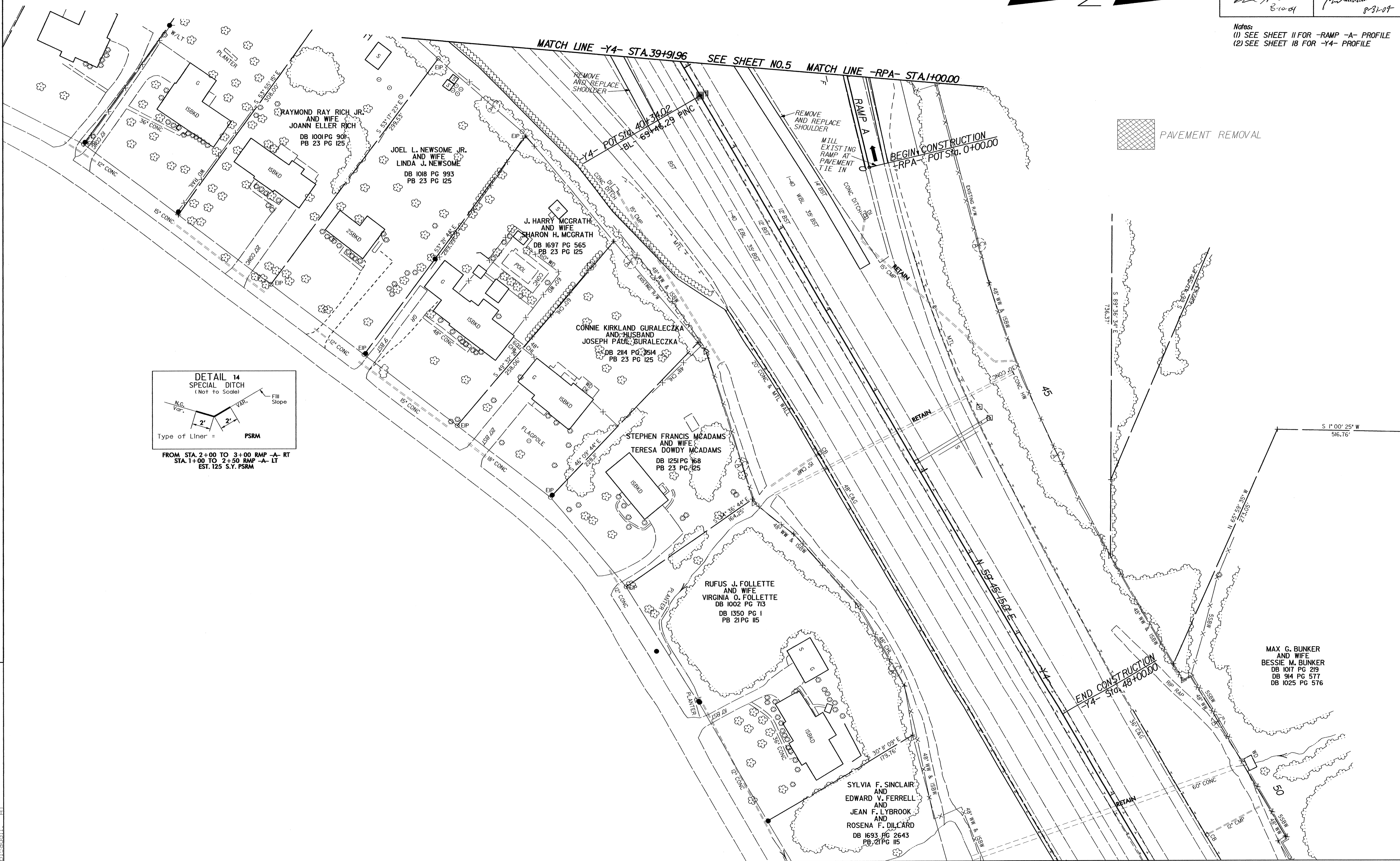
Notes:
 (1) SEE SHEET 11 FOR -RAMP -A- PROFILE
 (2) SEE SHEET 18 FOR -Y4- PROFILE



REVISIONS



10-AUG-2004 10:50
E:\p\psrm\1-2102\1-2102.dwg



MAX G. BUNKER
AND WIFE
BESSIE M. BUNKER
DB 914 PG 577
DB 1025 PG 576