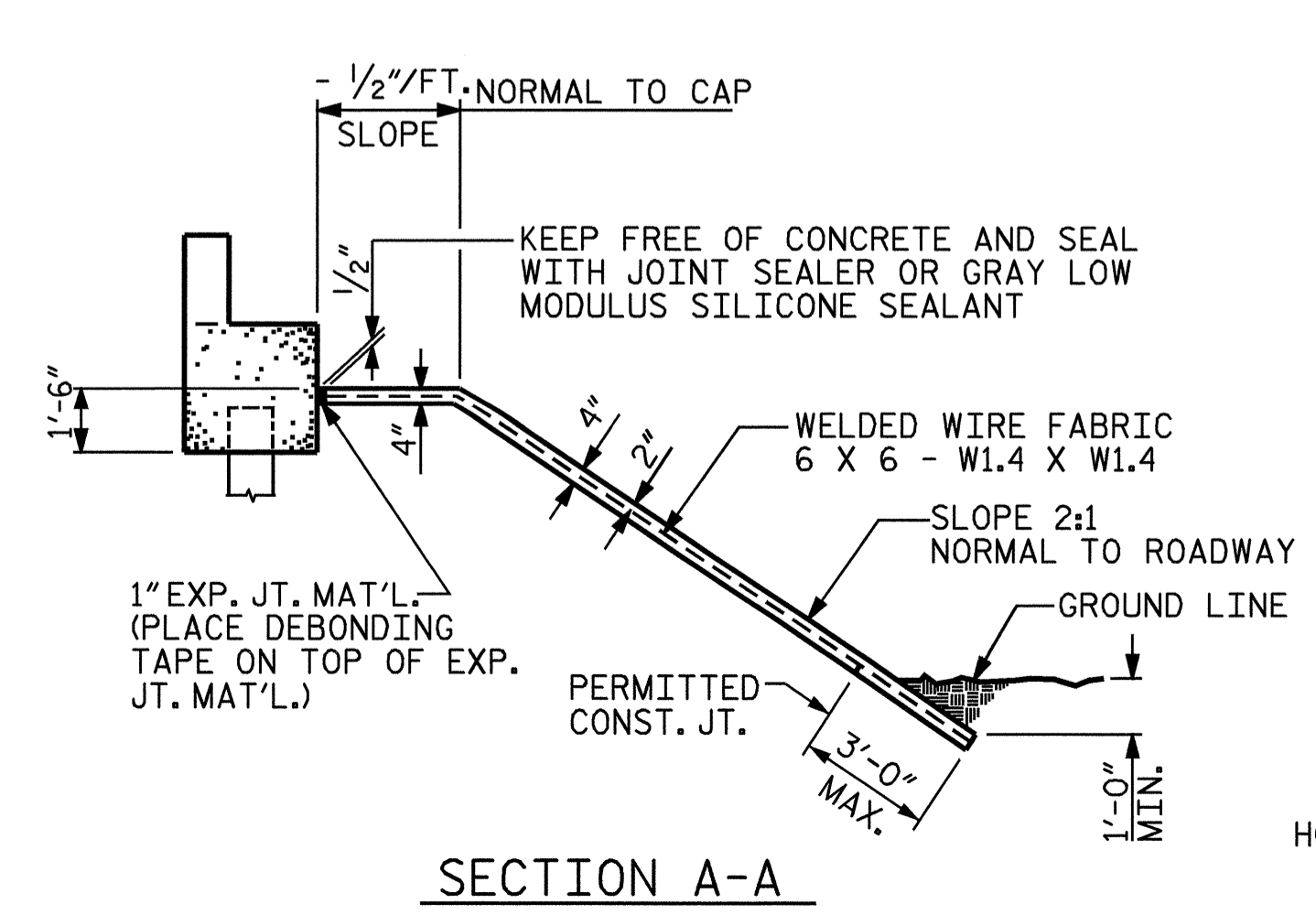


**GENERAL NOTES**

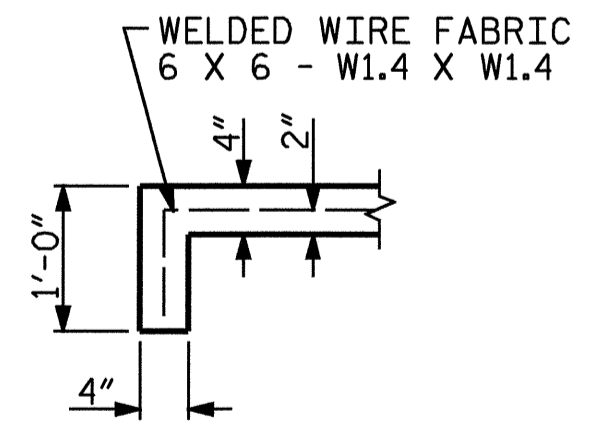
SLOPE PROTECTION SHALL BE PLACED UNDER THE ENDS OF THE BRIDGE AS SHOWN IN THE DETAILS. STRAIGHT EDGING WILL NOT BE REQUIRED UNLESS, IN THE OPINION OF THE ENGINEER, VISUAL INSPECTION INDICATES A NEED FOR IT. METHOD OF MEASUREMENT AND BASIS OF PAYMENT SHALL BE AS PRESCRIBED IN SECTION 462 OF THE STANDARD SPECIFICATIONS.

SLOPE PROTECTION SHALL CONSIST OF 4" POURED-IN-PLACE CONCRETE PAVING AS SHOWN IN THE DETAILS ON THIS SHEET. CONCRETE SHALL BE CLASS 'B'. THE CONCRETE SURFACE SHALL BE FLOATED WITH A WOODEN FLOAT AND FINISHED. WELDED WIRE FABRIC REINFORCING SHALL BE 6 X 6 - W1.4 X W1.4, 60" WIDE. SLOPE PROTECTION SHALL BE POURED IN 5' STRIPS AS SHOWN IN THE "POURING DETAIL" WITH 2'-0" LONG #4 BARS PLACED ALONG THE SLOPE BETWEEN STRIPS AT 1'-6" MAXIMUM SPACING. SLOPE PROTECTION MAY BE POURED IN ALTERNATE 4' AND 5' STRIPS AS SHOWN IN THE "OPTIONAL POURING DETAIL" WITH ADJACENT RUNS OF WELDED WIRE FABRIC LAPPING AT LEAST 6". THE COST OF THE WELDED WIRE FABRIC AND #4 BARS, IF USED, SHALL BE INCLUDED IN THE CONTRACT UNIT PRICE BID PER SQUARE YARD FOR SLOPE PROTECTION.

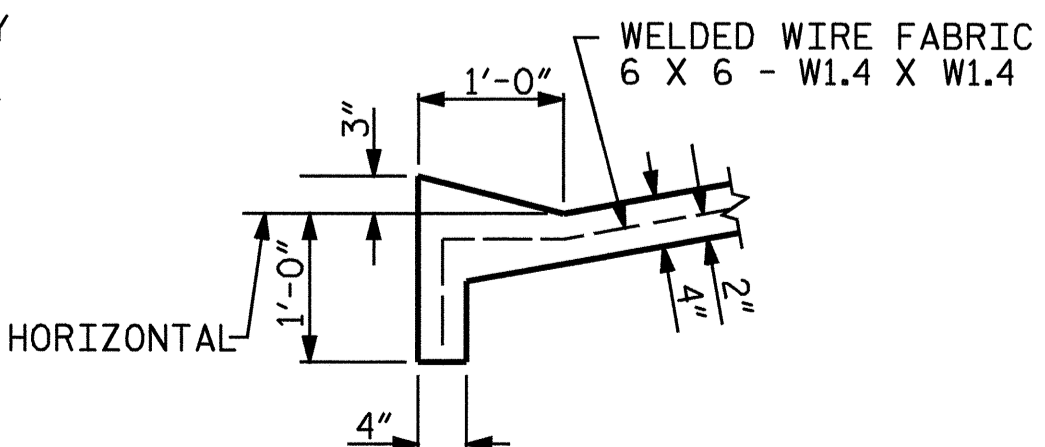
**PLAN**



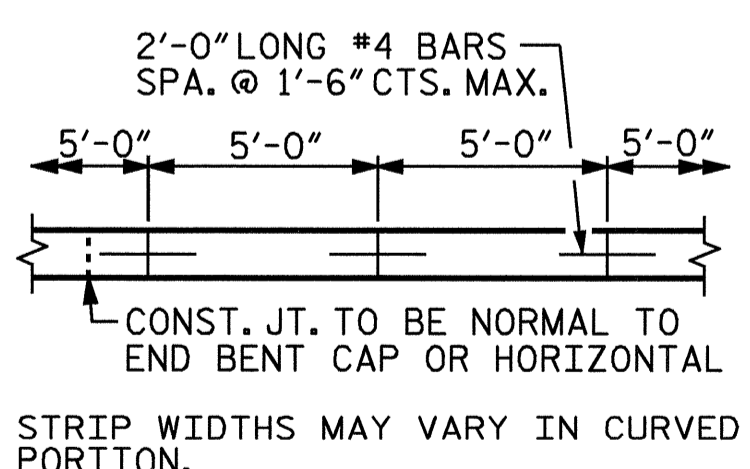
**SECTION A-A**



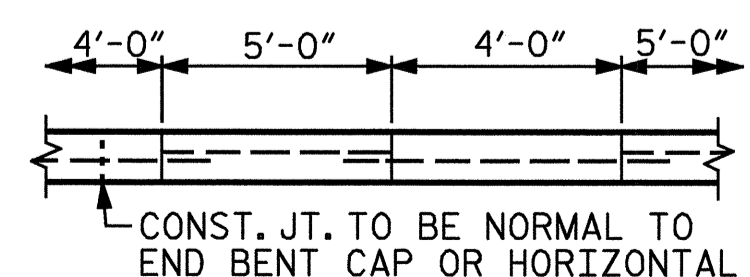
**SECTION B-B**



**SECTION C-C**



**POURING DETAIL**



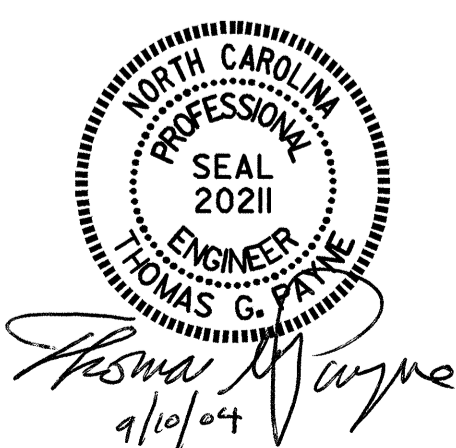
**OPTIONAL POURING DETAIL**

BRIDGE @ STA. 20+71.54 -L-	4 INCH SLOPE PROTECTION			*WELDED WIRE FABRIC 60 INCHES WIDE		
	SQUARE YARDS			APPROX. L.F.		
	STAGE 1	STAGE 2	TOTAL	STAGE 1	STAGE 2	TOTAL
END BENT #1	306	252	558	612	504	1116
END BENT #2	273	229	502	546	458	1004
<b>TOTAL</b>			<b>1060</b>			<b>2120</b>

\* QUANTITY SHOWN IS BASED ON 5' POURS.

PROJECT NO. I-2102  
FORSYTH COUNTY  
 STATION: 20+71.54 -L-

STATE OF NORTH CAROLINA  
 DEPARTMENT OF TRANSPORTATION  
 RALEIGH  
**SLOPE PROTECTION  
 DETAILS**



REVISIONS						SHEET NO.
NO.	BY:	DATE:	NO.	BY:	DATE:	TOTAL SHEETS
1			3			S-46
2			4			51

DRAWN BY : L.L. MURPHY/A.C. DATE : 7/03  
 CHECKED BY : SH. SOCKWELL DATE : 6/04