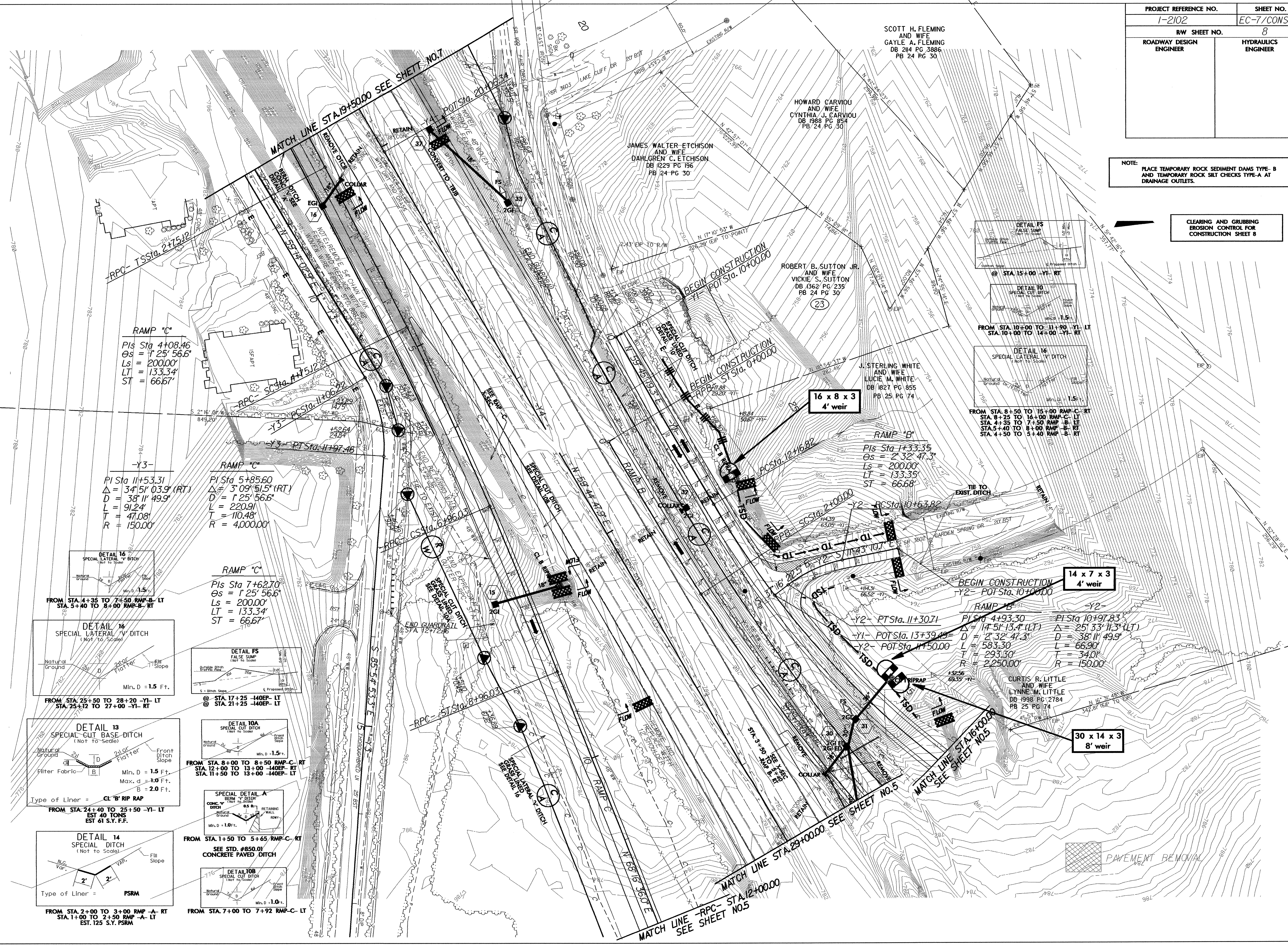


PROJECT REFERENCE NO.		SHEET NO.	
1-2102		EC-7/CONST.8	
RW SHEET NO.		8	
ROADWAY DESIGN ENGINEER	SCOTT H. FLEMING AND WIFE GAYLE A. FLEMING DB 214 PG 3886 PB 24 PG 30		HYDRAULICS ENGINEER

NOTE: PLACE TEMPORARY ROCK SEDIMENT DAMS TYPE-B AND TEMPORARY ROCK SILT CHECKS TYPE-A AT DRAINAGE OUTLETS.

CLEARING AND GRUBBING EROSION CONTROL FOR CONSTRUCTION SHEET 8



RAMP "C"  
 PIs Sta 4+08.46  
 Δs = 1' 25" 56.6"  
 Ls = 200.00'  
 LT = 133.34'  
 ST = 66.67'

PI Sta 11+53.31  
 Δ = 34' 51" 03.9" (RT)  
 D = 38' 11" 49.9"  
 L = 91.24'  
 T = 47.08'  
 R = 150.00'

RAMP "C"  
 PIs Sta 5+85.60  
 Δs = 1' 25" 56.6" (RT)  
 D = 3' 09" 51.5" (RT)  
 L = 220.91'  
 T = 110.48'  
 R = 4,000.00'

RAMP "C"  
 PIs Sta 7+62.70  
 Δs = 1' 25" 56.6"  
 Ls = 200.00'  
 LT = 133.34'  
 ST = 66.67'

DETAIL 16  
 SPECIAL LATERAL DITCH  
 (Not To Scale)  
 FROM STA. 4+35 TO 7+50 RAMP-B-LT  
 STA. 5+40 TO 8+00 RAMP-B-RT

DETAIL 16  
 SPECIAL LATERAL DITCH  
 (Not To Scale)  
 FROM STA. 25+50 TO 28+20 -Y1-LT  
 STA. 25+12 TO 27+00 -Y1-RT

DETAIL 13  
 SPECIAL CUT BASE DITCH  
 (Not To Scale)  
 FROM STA. 24+40 TO 25+50 -Y1-LT  
 EST. 40 TONS  
 EST. 61 S.Y. F.F.

DETAIL 14  
 SPECIAL DITCH  
 (Not To Scale)  
 FROM STA. 2+00 TO 3+00 RAMP-A-RT  
 STA. 1+00 TO 2+50 RAMP-A-LT  
 EST. 125 S.Y. PSRM

DETAIL FS  
 FALSE SUMP  
 (Not To Scale)  
 @ STA. 17+25 -140EP-LT  
 @ STA. 21+25 -140EP-LT

DETAIL 10A  
 SPECIAL CUT DITCH  
 (Not To Scale)  
 FROM STA. 8+00 TO 8+50 RAMP-C-RT  
 STA. 12+00 TO 13+00 -140EP-RT  
 STA. 11+50 TO 13+00 -140EP-LT

SPECIAL DETAIL A  
 BERM DITCH  
 (Not To Scale)  
 FROM STA. 1+50 TO 5+65 RAMP-C-RT  
 SEE STD. #850.01  
 CONCRETE PAVED DITCH

DETAIL 10B  
 SPECIAL CUT DITCH  
 (Not To Scale)  
 FROM STA. 7+00 TO 7+92 RAMP-C-LT

DETAIL FS  
 FALSE SUMP  
 (Not To Scale)  
 @ STA. 15+00 -Y1-RT

DETAIL 10  
 SPECIAL CUT DITCH  
 (Not To Scale)  
 FROM STA. 10+00 TO 11+90 -Y1-LT  
 STA. 10+00 TO 14+00 -Y1-RT

DETAIL 16  
 SPECIAL LATERAL DITCH  
 (Not To Scale)  
 FROM STA. 8+50 TO 15+00 RAMP-C-RT  
 STA. 8+25 TO 16+00 RAMP-C-LT  
 STA. 4+35 TO 7+50 RAMP-B-LT  
 STA. 5+40 TO 8+00 RAMP-B-RT  
 STA. 4+50 TO 5+40 RAMP-B-RT

RAMP "B"  
 PIs Sta 4+93.30  
 Δ = 14' 51" 13.4" (LT)  
 D = 2' 32" 47.3"  
 L = 583.30'  
 T = 293.30'  
 R = 2,250.00'

RAMP "B"  
 PIs Sta 10+97.83  
 Δ = 25' 33" 11.3" (LT)  
 D = 38' 11" 49.9"  
 L = 66.90'  
 T = 34.0'  
 R = 150.00'