

8/17/99

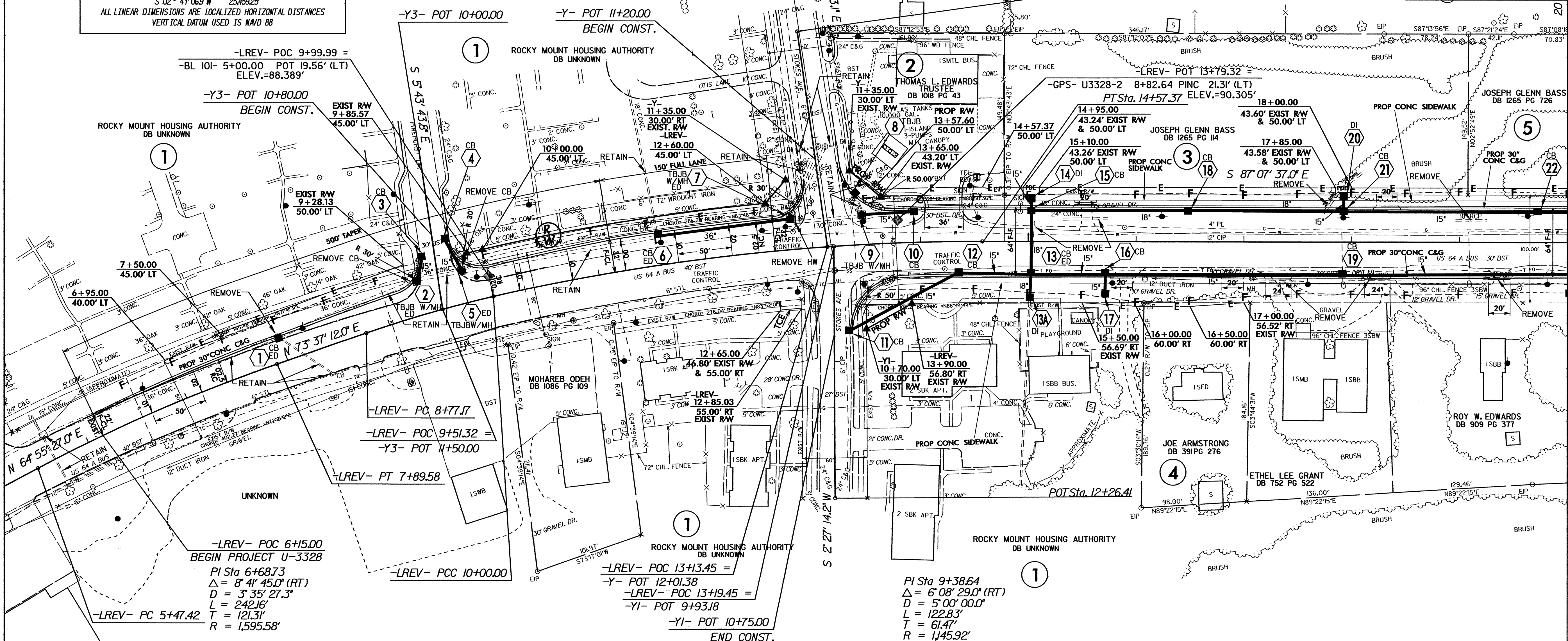
### DATUM DESCRIPTION

THE LOCALIZED COORDINATE SYSTEM DEVELOPED FOR THIS PROJECT IS BASED ON THE STATE PLANE COORDINATES ESTABLISHED BY NCDOT FOR MONUMENT "R2823-P16" WITH NAD 1983/95 STATE PLANE GRID COORDINATES OF NORTHING: 826864.432(F) EASTING: 2364491.501(F) THE AVERAGE COMBINED GRID FACTOR USED ON THIS PROJECT (GROUND TO GRID) IS: 0.99995903 THE N.C. LAMBERT GRID BEARING AND LOCALIZED HORIZONTAL DISTANCE FROM "R2823-P16" TO -LREV- STATION 6+1500 IS S 02° 41' 06.9" W 25,459.25' ALL LINEAR DIMENSIONS ARE LOCALIZED HORIZONTAL DISTANCES VERTICAL DATUM USED IS NAVD 88

PI Sta 12+2969  
 $\Delta = 13^{\circ} 06' 42.0"$  (RT)  
 $D = 2^{\circ} 52' 00.4"$   
 $L = 457.37'$   
 $T = 229.69'$   
 $R = 1,998.61'$   
 $SE=025(RC)$

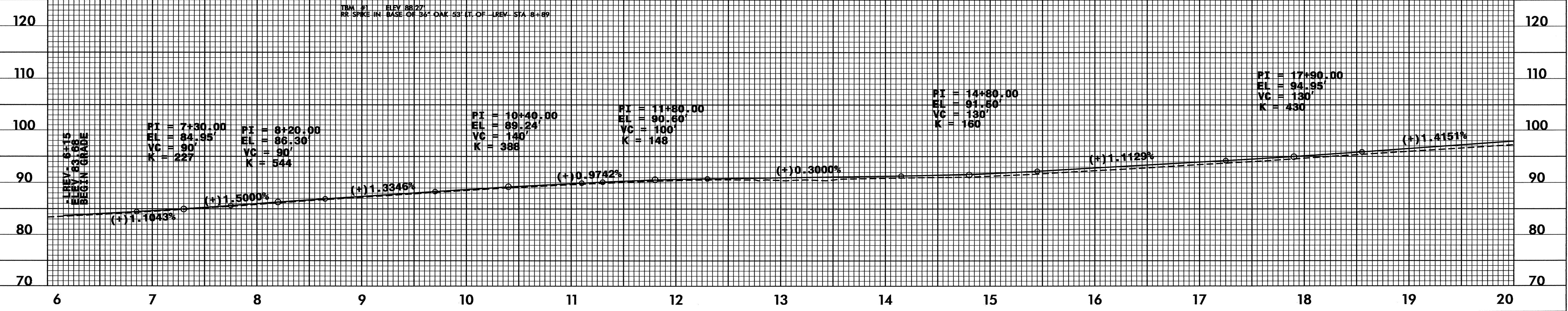
STOKES ST.	3900	4400
16700	2800	900
25400	2800	1400
US 64 BUS	400	200
	400	400
STOKES ST.	800	1000
		2004
		2025

PROJECT REFERENCE NO.	U-3328
SHEET NO.	4
R/W SHEET NO.	4
ROADWAY DESIGN ENGINEER	HYDRAULICS ENGINEER



REVISIONS

MATCH TO SHEET 5



13-OCT-2004 16:43  
 D:\V-Cad\Cad\U3328\U3328\_PSH\_04.DOC4.DGN  
 ds.thriddle