

DATUM DESCRIPTION
 THE LOCALIZED COORDINATE SYSTEM DEVELOPED FOR THIS PROJECT IS BASED ON THE STATE PLANE COORDINATES ESTABLISHED BY NCDOT FOR MONUMENT "R2823-P16" WITH NAD 1983/95 STATE PLANE GRID COORDINATES OF NORTHING: 826864.432(11) EASTING: 2364491.501(11) THE AVERAGE COMBINED GRID FACTOR USED ON THIS PROJECT (GROUND TO GRID) IS: 0.99995903 THE N.C. LAMBERT GRID BEARING AND LOCALIZED HORIZONTAL GROUND DISTANCE FROM "R2823-P16" TO -LREV- STATION 6+15.00 IS S 02° 41' 06.9" W 25,459.25' ALL LINEAR DIMENSIONS ARE LOCALIZED HORIZONTAL DISTANCES VERTICAL DATUM USED IS NVD 88

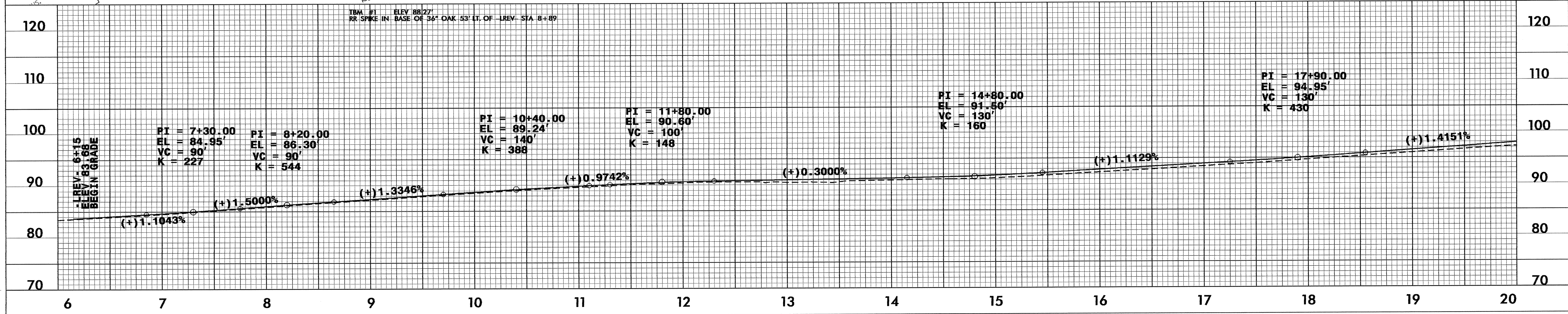
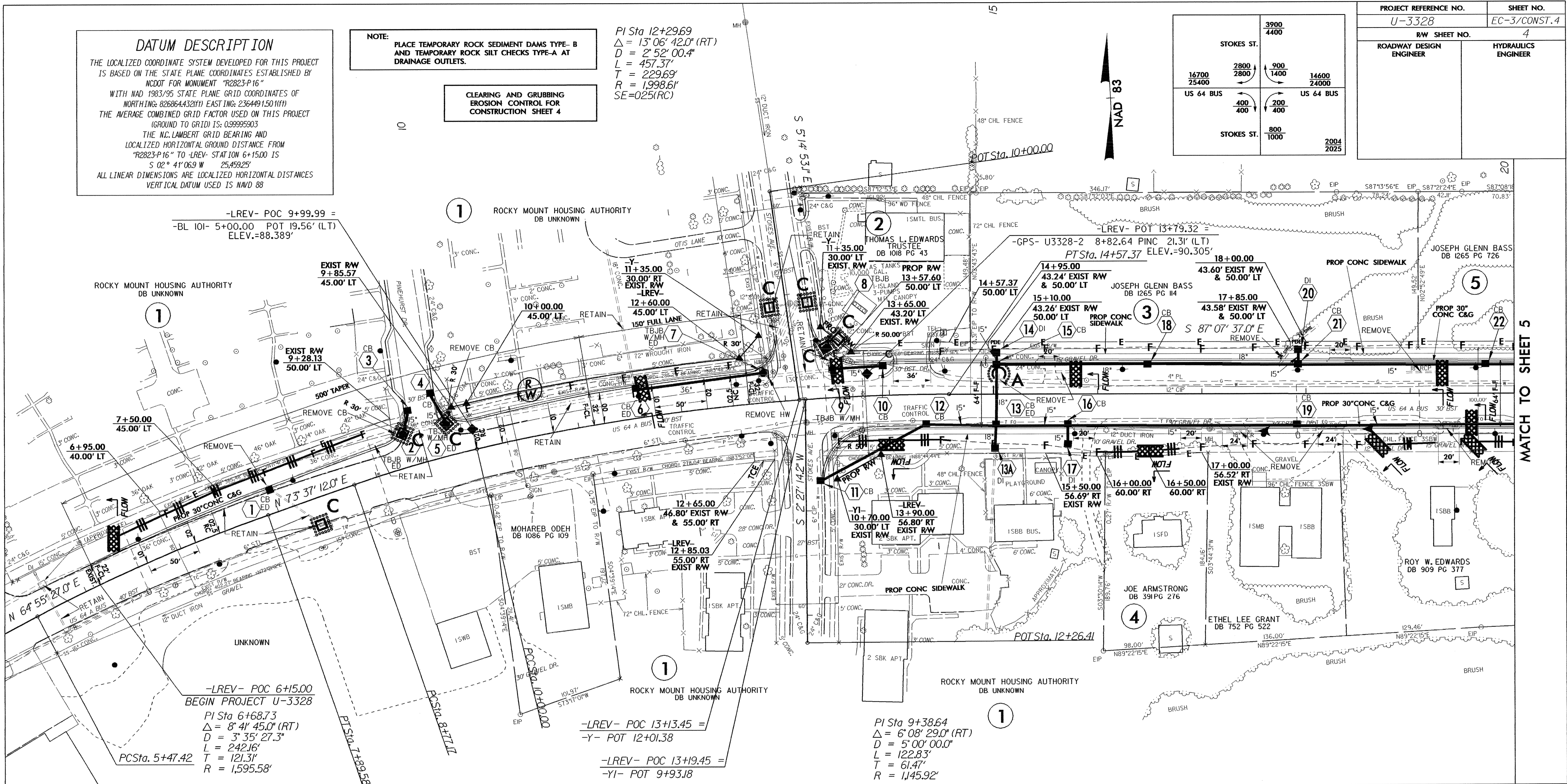
NOTE: PLACE TEMPORARY ROCK SEDIMENT DAMS TYPE-B AND TEMPORARY ROCK SILT CHECKS TYPE-A AT DRAINAGE OUTLETS.

CLEARING AND GRUBBING EROSION CONTROL FOR CONSTRUCTION SHEET 4

PI Sta 12+29.69
 $\Delta = 13' 06' 42.0"$ (RT)
 $D = 2' 52' 00.4"$
 $L = 457.37'$
 $T = 229.69'$
 $R = 1998.61'$
 $SE=025(RC)$

STOKES ST.	3900	4400
16700	2800	900
25400	2800	1400
US 64 BUS	400	200
	400	400
STOKES ST.	800	1000
		2004
		2025

PROJECT REFERENCE NO.	SHEET NO.
U-3328	EC-3/CONST.4
R/W SHEET NO.	4
ROADWAY DESIGN ENGINEER	HYDRAULICS ENGINEER



MATCH TO SHEET 5