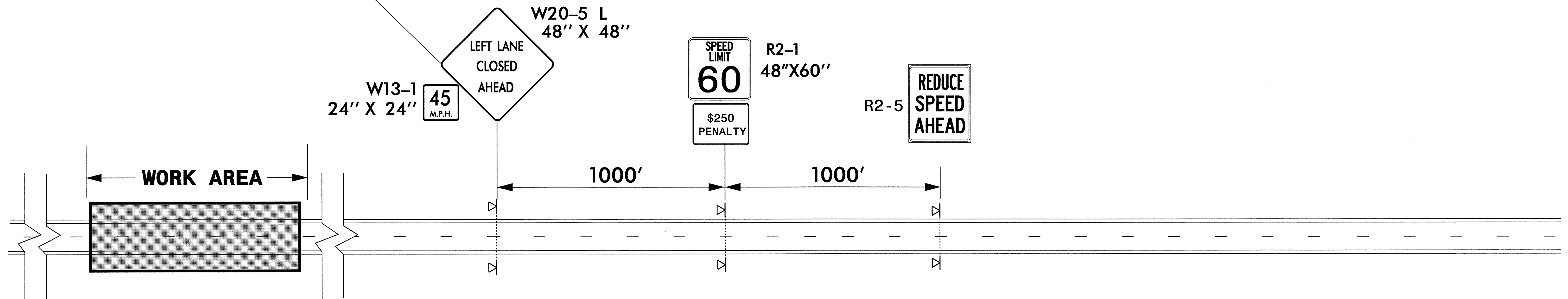


SEE ROADWAY STANDARD DRAWING 1101.02,
SHEET 3 OF 7, FOR ADDITIONAL SIGNS FOR
TEMPORARY LEFT/RIGHT LANE CLOSURES



GENERAL NOTES

-THE SIZE OF ALL "REDUCE SPEED AHEAD" SIGNS (R2-5) IS 48" X 60". THE SIZE OF ALL ORANGE PANELS IS 48" X 18".

03-SEP-2004 14:52
 H:\TCP\ReduceSpeedAhead.dgn
 Jgermiller AT TETC21233

APPROVED:	DATE: 1/2002	DETAIL: TEMPORARY SPEED LIMIT REDUCTION FOR WORK AREAS	
	SCALE: NONE		
	DATE: JANUARY 2002		
	DWG. BY: JLE		
	DESIGN BY: JLE		
	REVIEWED BY: JWG		