

TWO LANE, TWO WAY WORK ZONE (L-LINES)

WBS Elements: 39157, 9CR.10301.3, 9CR.20301.3, 9CR.303012.3 & 9CR.303025.3

| | |
|--|---------------------|
| PROJ. REFERENCE NO. See to the Left | SHEET NO. NCMA-1 |
|--|---------------------|

| POSTED SPEED LIMIT (M.P.H.) | RECOMMENDED MINIMUM SIGN SPACING |
|-----------------------------|----------------------------------|
| P.S.L. ≤ 50 | ⊗ |
| P.S.L. ≥ 55 | 350' |
| | 500' |

*** WORK ZONE NEXT XX MILES** G20-1 42"X20"

*** THIS SIGN TO BE USED ON PROJECTS LONGER THAN 2 MILES**
THE NUMBER DISPLAYED ON THE SIGN IS TO BE A WHOLE NUMBER ROUNDED UP TO THE NEXT MILE
IT'S TO BE LOCATED 1,500 FEET INSIDE OF THE CONSTRUCTION LIMITS

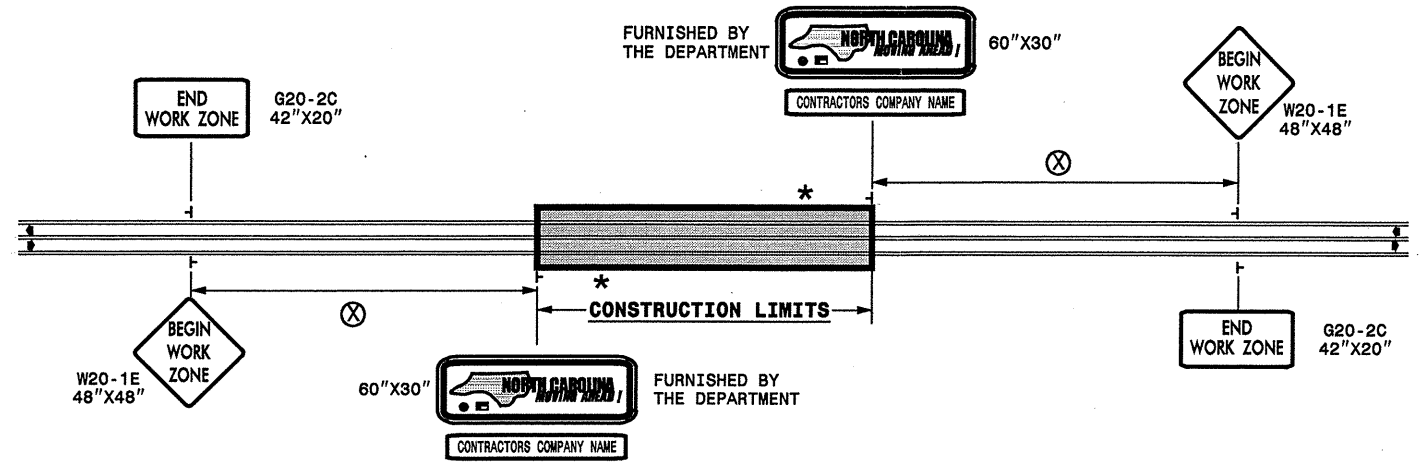
STATE OF NORTH CAROLINA
DEPT. OF TRANSPORTATION
DIVISION OF HIGHWAYS
RALEIGH, N.C.

FURNISHED BY THE DEPARTMENT

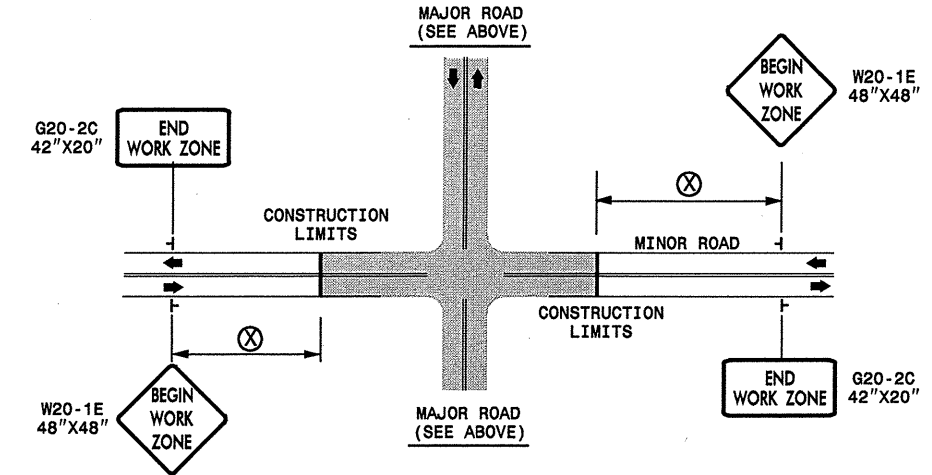
60"X30"

CONTRACTORS COMPANY NAME

60" Max. X 12"



INTERSECTIONS (-Y- LINES)

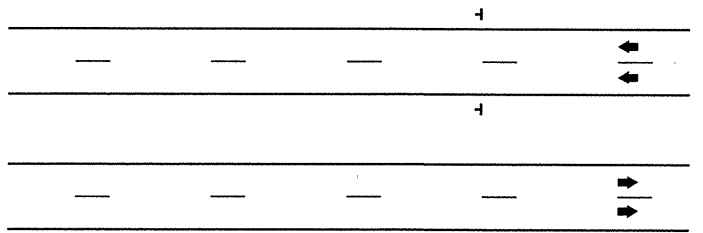


*** ON INTERSECTION TYPE PROJECTS, SELECT THE MAJOR ROAD BASED ON THE HIGHER ADT.**

FREEWAYS / INTERSTATES

DUAL MOUNT "BEGIN WORK ZONE" SIGNS 1,000' IN ADVANCE OF PROJECT LIMITS

DUAL MOUNT "MOVING AHEAD" SIGNS 500' IN ADVANCE OF PROJECT LIMITS



DETAIL DRAWING FOR ADVANCE
WARNING WORK ZONE SIGNS

GENERAL NOTES

SEE SPECIAL PROVISIONS FOR "NORTH CAROLINA MOVING AHEAD" REQUIREMENTS.

LEGEND

| | |
|---|---------------------------|
| ┌ | STATIONARY SIGN |
| ➔ | DIRECTION OF TRAFFIC FLOW |

SHEET 1 OF 1

| | | | |
|-----------------|-----------------|---|-----------|
| APPROVED: _____ | DATE: _____ | ADVANCE WARNING WORK ZONE SIGNS FOR "MOVING AHEAD" | |
| SEAL | SCALE: NONE | | REVISIONS |
| | DATE: 07/03 | | |
| | DWG. BY: JSK | | |
| | DESIGN BY: JSK | | |
| | REVIEWED BY: SK | | |