

PROJECT REFERENCE NO. B-4334	SHEET NO. EC-3/CONST.4
RW SHEET NO.	
ROADWAY DESIGN ENGINEER	HYDRAULICS ENGINEER

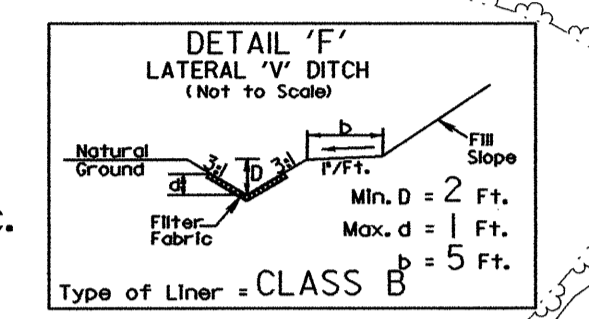
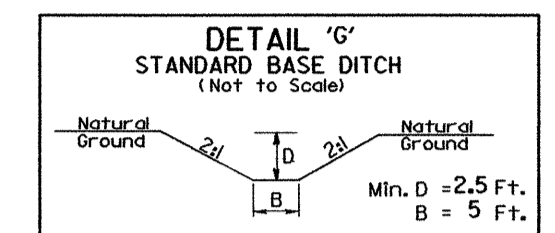
DATUM DESCRIPTION
 THE LOCALIZED COORDINATE SYSTEM DEVELOPED FOR THIS PROJECT IS BASED ON THE STATE PLANE COORDINATES ESTABLISHED BY NCGS FOR MONUMENT "POTTS"
 WITH NAD 83 STATE PLANE GRID COORDINATES OF
 NORTHING: 726960.1439(E) EASTING: 1593494.1555(F)
 THE AVERAGE COMBINED GRID FACTOR USED ON THIS PROJECT (GROUND TO GRID) IS: 0.999876970
 THE N.C. LAMBERT GRID BEARING
 LOCALIZED HORIZONTAL GROUND DISTANCE FROM "POTTS" TO -L- STATION 18+50 IS
 N 47° 24' 05.23" E, 5,607.39'
 ALL LINEAR DIMENSIONS ARE LOCALIZED HORIZONTAL DISTANCES
 VERTICAL DATUM USED IS NGVD 29

NOTE:
 PLACE TEMPORARY ROCK SEDIMENT DAMS TYPE-B AND TEMPORARY ROCK SILT CHECKS TYPE-A AT DRAINAGE OUTLETS.

CLEARING AND GRUBBING EROSION CONTROL FOR CONSTRUCTION SHEET 4

NOTE:
 UTILIZE TEMPORARY ROCK SEDIMENT DAM TYPE - B AS STILLING BASIN WHERE APPLICABLE.

-L-
 PI Sta 15+72.98 PI Sta 23+80.55
 $\Delta = 26^{\circ} 06' 24.5" (LT)$ $\Delta = 21^{\circ} 48' 41.0" (RT)$
 $D = 7^{\circ} 38' 22.0"$ $D = 3^{\circ} 38' 16.2"$
 $L = 3417.4'$ $L = 599.57'$
 $T = 173.89'$ $T = 303.46'$
 $R = 750.00'$ $R = 1575.00'$
 $SE = 0.06$
 $INC = 30'$



-L- STA 27+35 TO 27+85 (LT)

WHITE OAK TRANSPORT, INC.
 DB 1094 PG 1963

①
 MICKEY WAYNE LANDRETH AND WIFE,
 TRACIE MARTIN LANDRETH
 DB 779 PG 1405

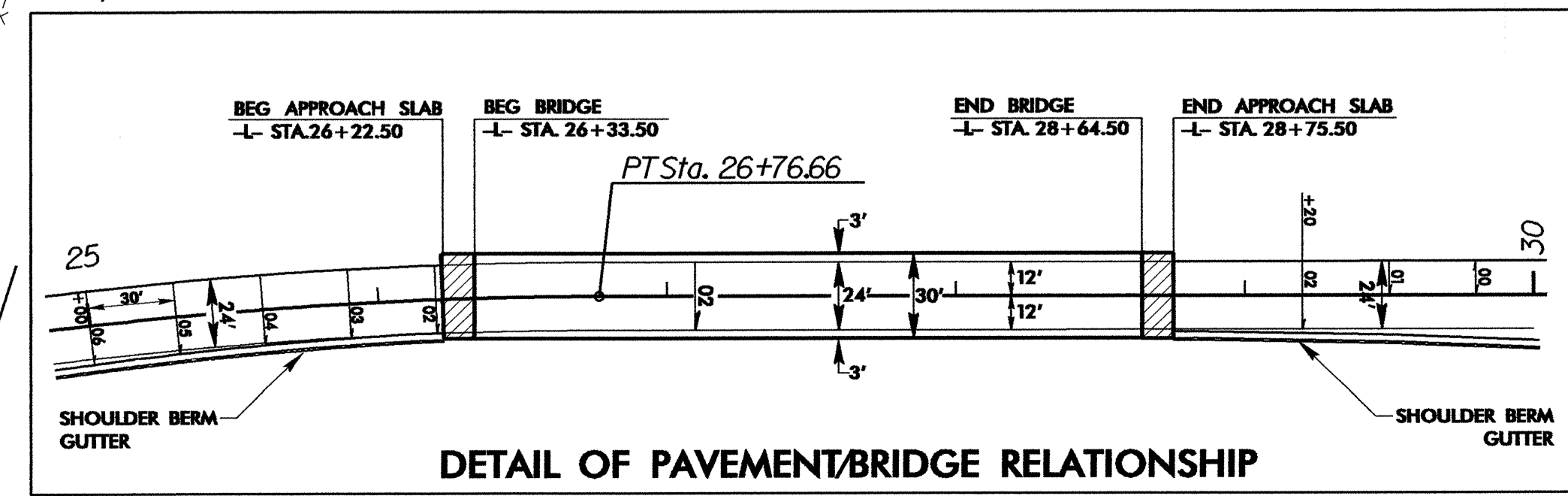
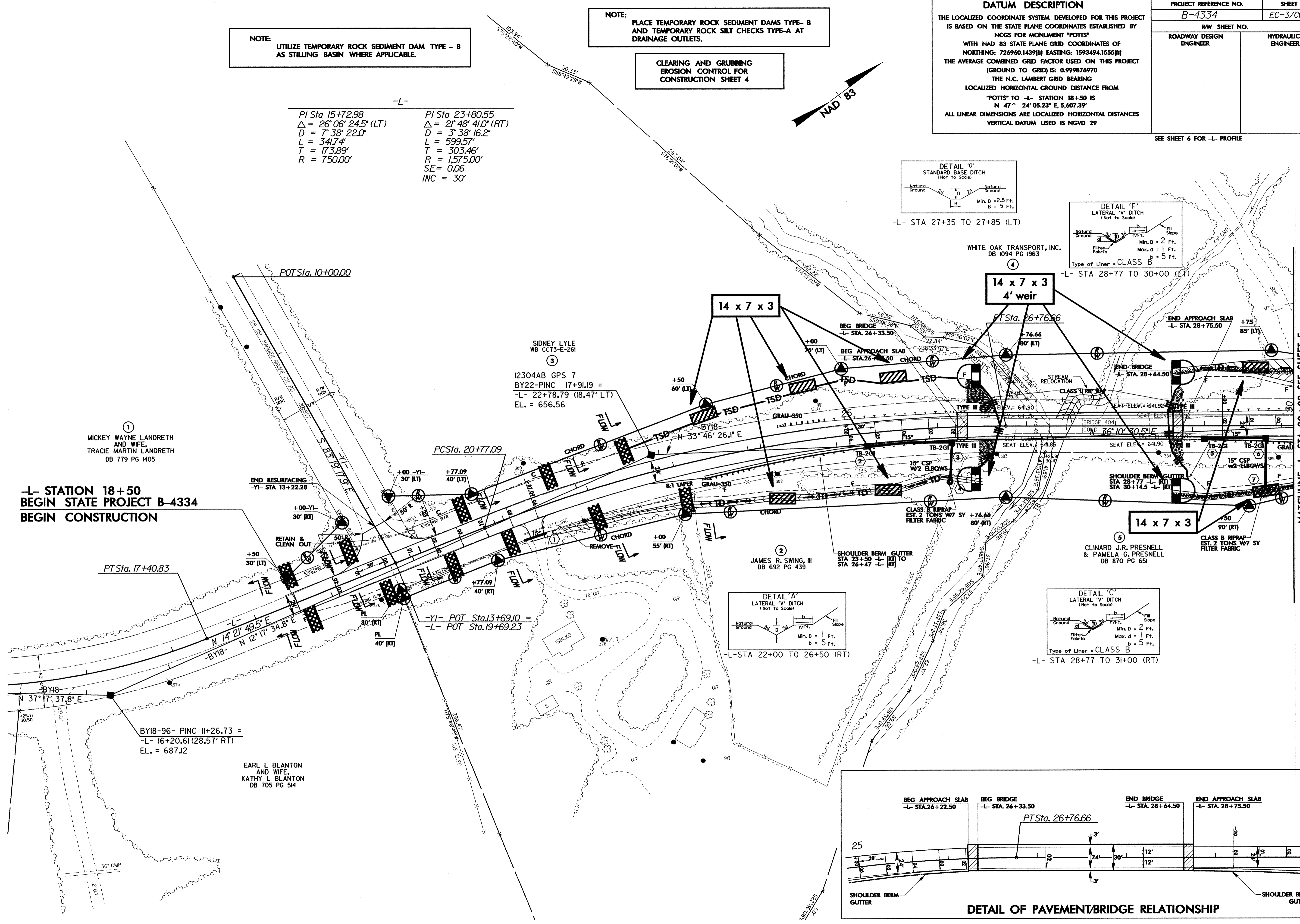
③
 SIDNEY LYLE
 WB CC73-E-261
 I2304AB GPS 7
 BY22-PINC 17+91.19 =
 -L- 22+78.79 (18.47' LT)
 EL. = 656.56

②
 JAMES R. SWING, III
 DB 692 PG 439

⑤
 CLINARD J.R. PRESNELL & PAMELA G. PRESNELL
 DB 870 PG 651

EARL L. BLANTON AND WIFE,
 KATHY L. BLANTON
 DB 705 PG 514

-L- STATION 18+50
 BEGIN STATE PROJECT B-4334
 BEGIN CONSTRUCTION



MATCHLINE -L- STA. 30+00 SEE SHEET 5

SEE SHEET 6 FOR -L- PROFILE