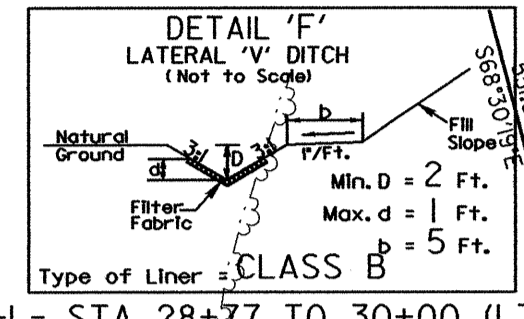
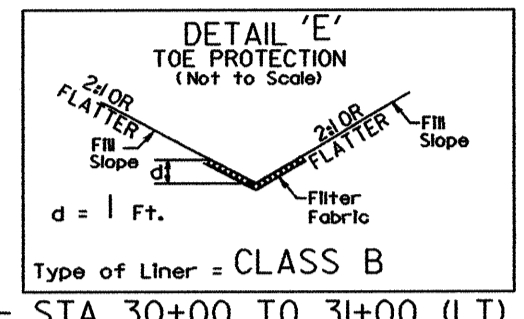
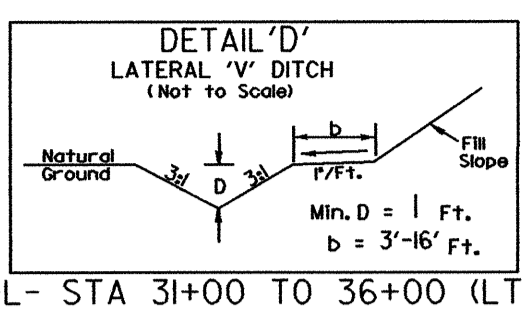
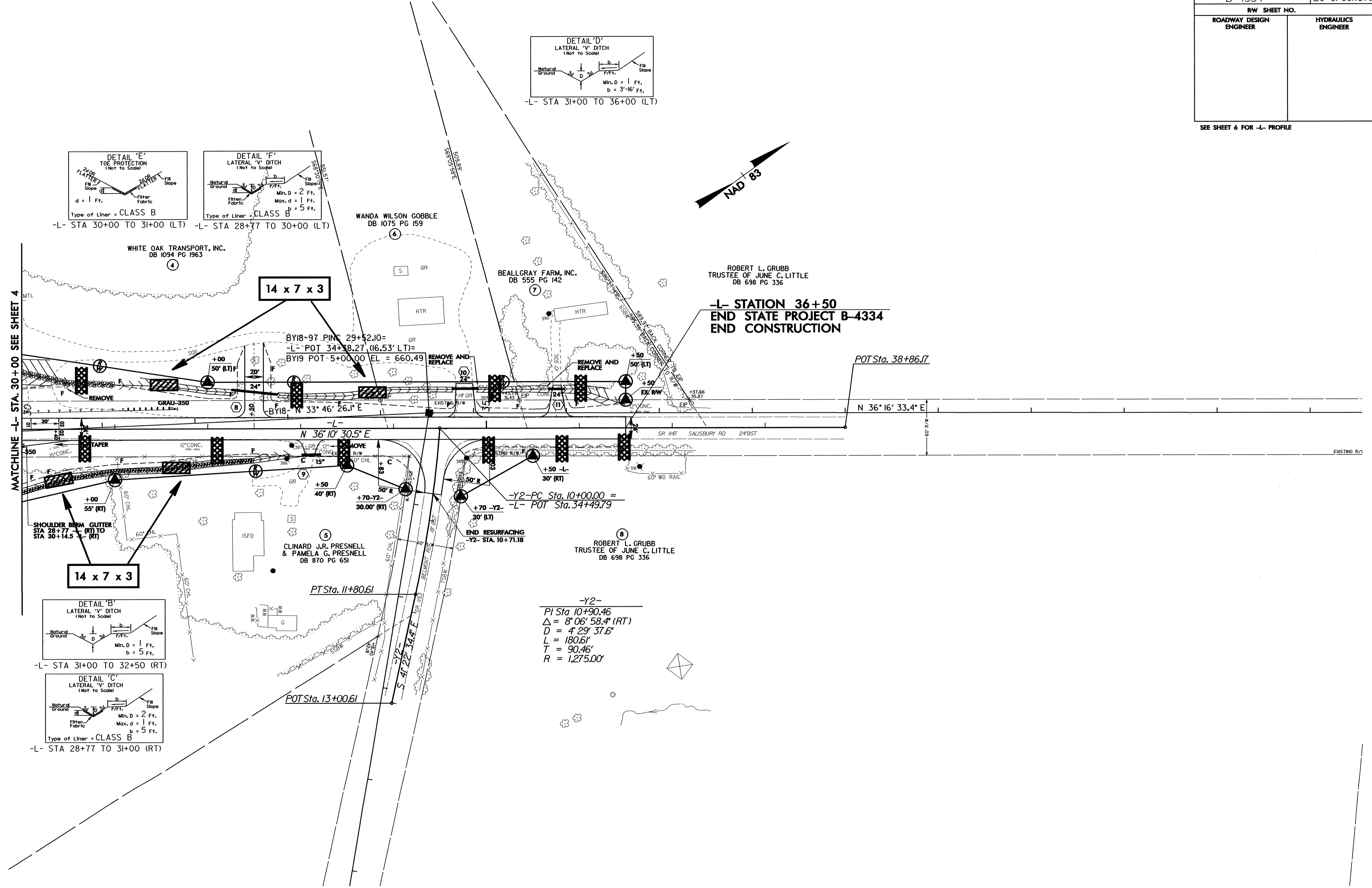


PROJECT REFERENCE NO. B-4334	SHEET NO. EC-6/CONST.5
RW SHEET NO.	
ROADWAY DESIGN ENGINEER	HYDRAULICS ENGINEER

SEE SHEET 6 FOR -L- PROFILE

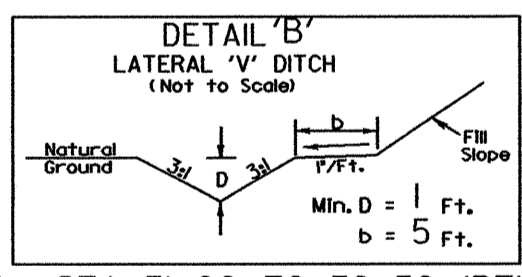


-L- STA 30+00 TO 31+00 (LT) -L- STA 28+77 TO 30+00 (LT)

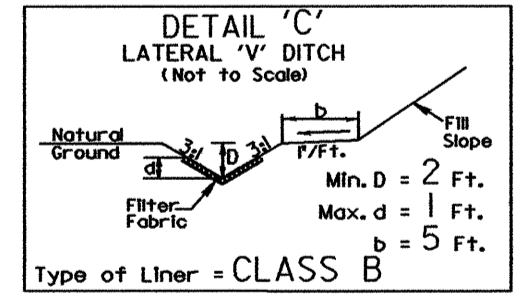
MATCHLINE -L- STA. 30+00 SEE SHEET 4

-L- STATION 36+50
END STATE PROJECT B-4334
END CONSTRUCTION

14 x 7 x 3



-L- STA 31+00 TO 32+50 (RT)



-L- STA 28+77 TO 31+00 (RT)

-Y2-
PI Sta 10+90.46
Δ = 8° 06' 58.4" (RT)
D = 4' 29' 37.6"
L = 180.61'
T = 90.46'
R = 1,275.00'