

8/17/99

PREPARED BY: **SEAR·BROWN**
 1000 Corporate Drive, Suite 101
 Hillsborough, NC 27278-8551
 (919) 732-3883
 www.searbrown.com

PROJECT REFERENCE NO. B-3626
 SHEET NO. 4
 RW SHEET NO.

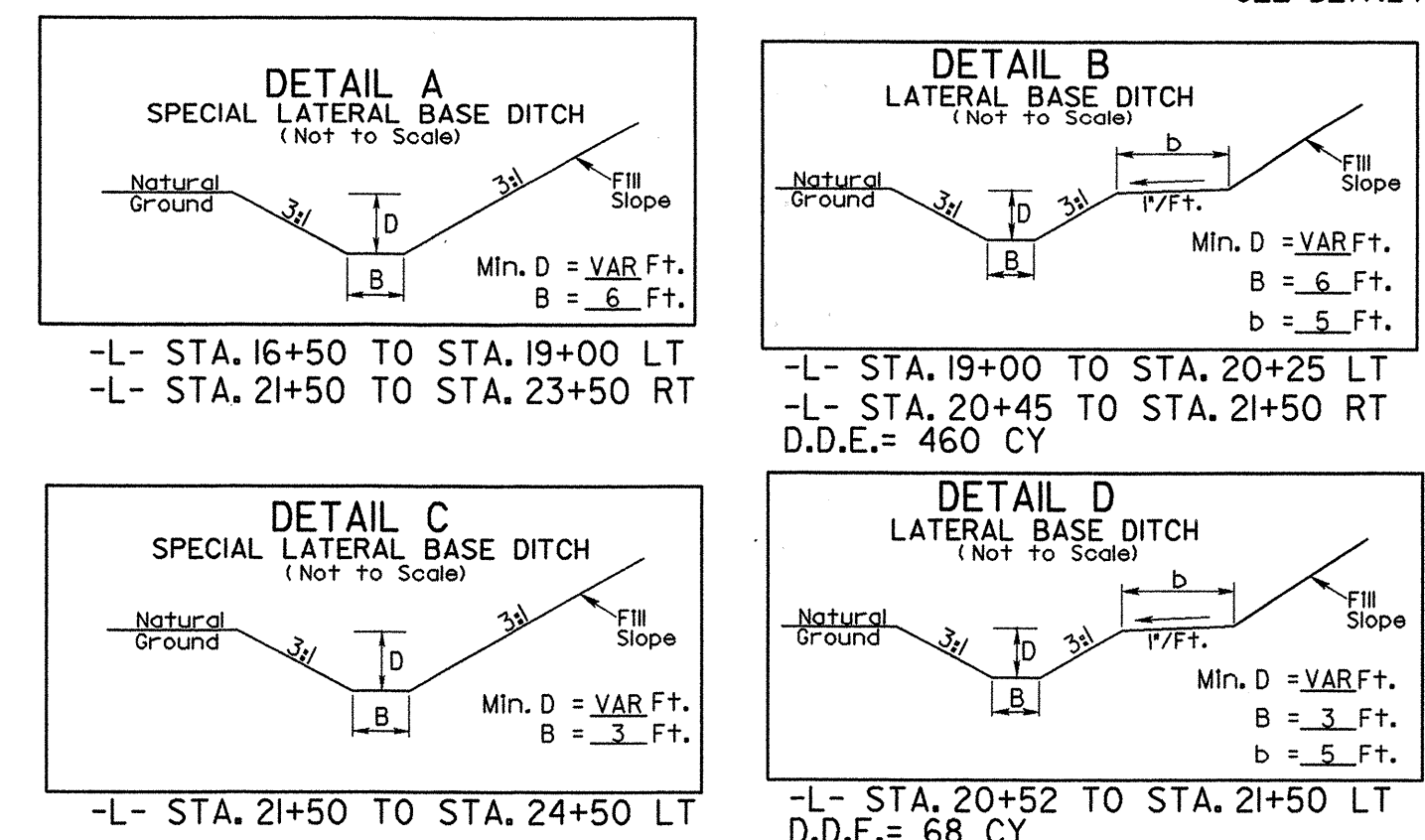
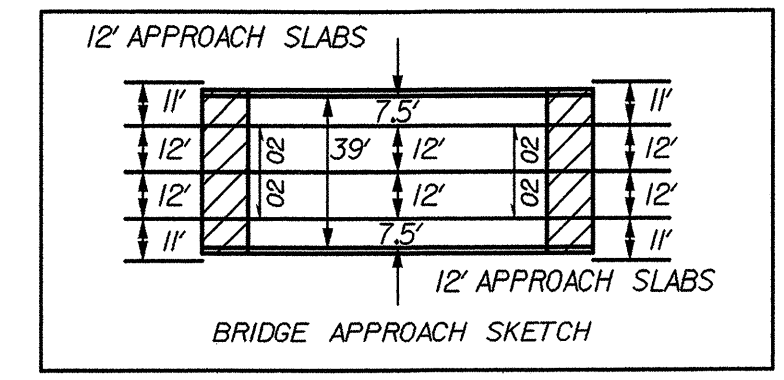
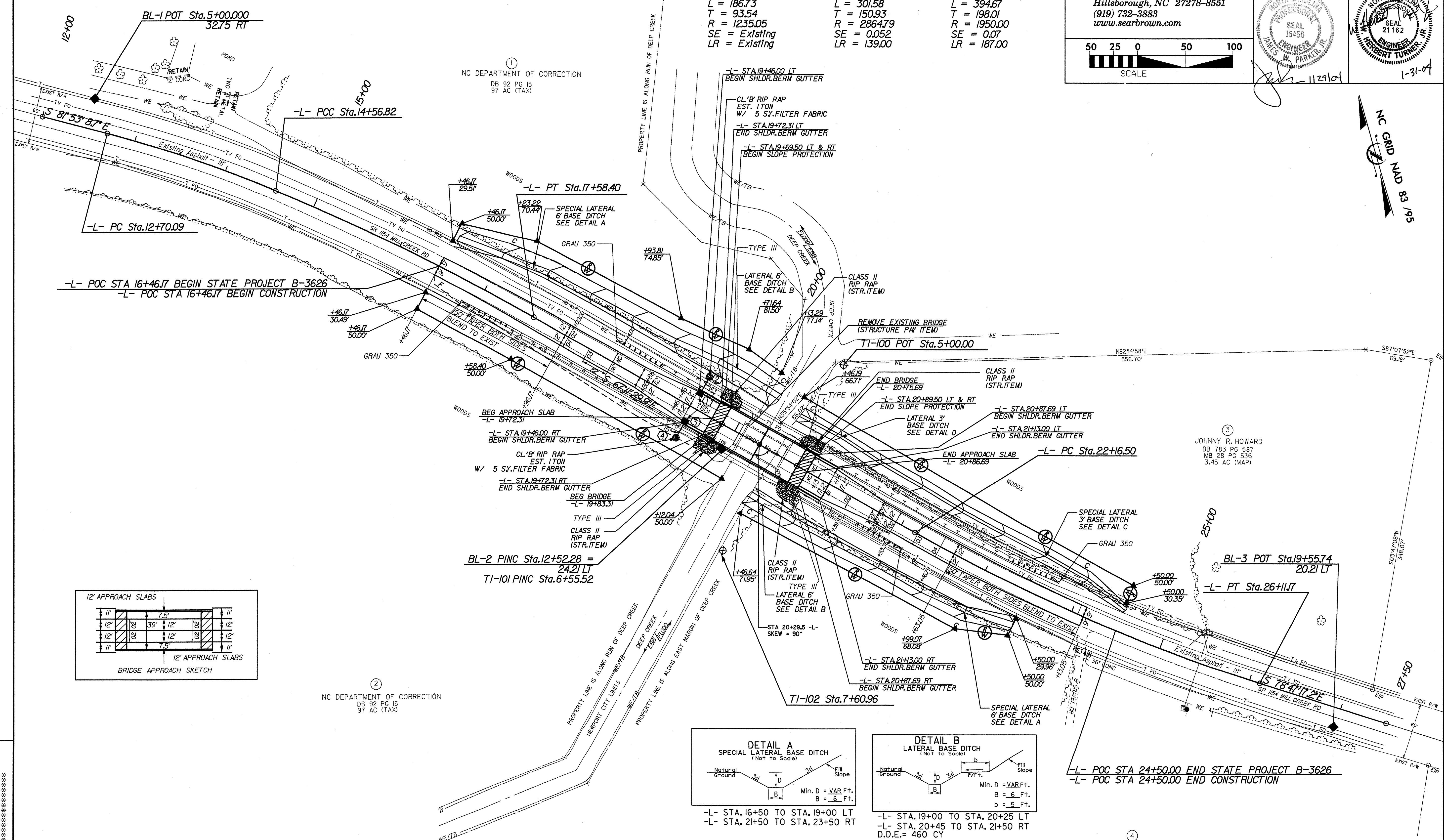
ROADWAY DESIGN ENGINEER
 NORTH CAROLINA PROFESSIONAL SEAL 15456
 JAMES W. PARKER, JR.

HYDRAULICS ENGINEER
 NORTH CAROLINA PROFESSIONAL SEAL 21162
 ROBERT TURNER, JR.

SCALE: 50 25 0 50 100

1-31-04

-L-	-L-	-L-
PISTA = 13+63.63	PISTA = 16+07.75	PISTA = 24+14.51
$\Delta = 8^{\circ}39'45.0"$	$\Delta = 6^{\circ}01'53.8"$	$\Delta = 11^{\circ}35'47.3"$
$D = 438'20.9'$	$D = 2'00'00.0'$	$D = 2'56'17.7'$
$L = 186.73$	$L = 301.58$	$L = 394.67$
$T = 93.54$	$T = 150.93$	$T = 198.01$
$R = 1235.05$	$R = 2864.79$	$R = 1950.00$
$SE = \text{Existing}$	$SE = 0.052$	$SE = 0.07$
$LR = \text{Existing}$	$LR = 139.00$	$LR = 187.00$



-L- POC STA 24+50.00 END STATE PROJECT B-3626
 -L- POC STA 24+50.00 END CONSTRUCTION

4
 BERT P. JUSTICE
 DB 366 PG 38
 33.74 AC (DEED)

NOTES:
 1) FOR -L- PROFILE SEE SHEET 5.
 2) SEE STRUCTURE PLANS SITHRU S...

REVISIONS

1
 2
 3
 4
 5
 6
 7
 8
 9
 10
 11
 12
 13
 14
 15
 16
 17
 18
 19
 20
 21
 22
 23
 24
 25
 26
 27
 28
 29
 30
 31
 32
 33
 34
 35
 36
 37
 38
 39
 40
 41
 42
 43
 44
 45
 46
 47
 48
 49
 50
 51
 52
 53
 54
 55
 56
 57
 58
 59
 60
 61
 62
 63
 64
 65
 66
 67
 68
 69
 70
 71
 72
 73
 74
 75
 76
 77
 78
 79
 80
 81
 82
 83
 84
 85
 86
 87
 88
 89
 90
 91
 92
 93
 94
 95
 96
 97
 98
 99
 100