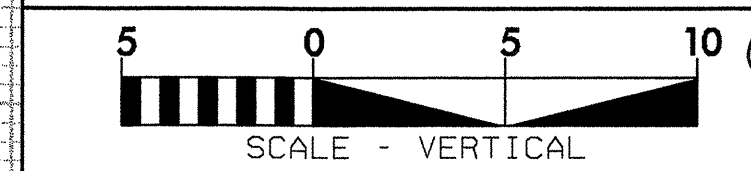
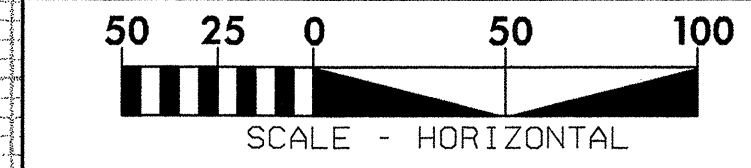


5/14/99

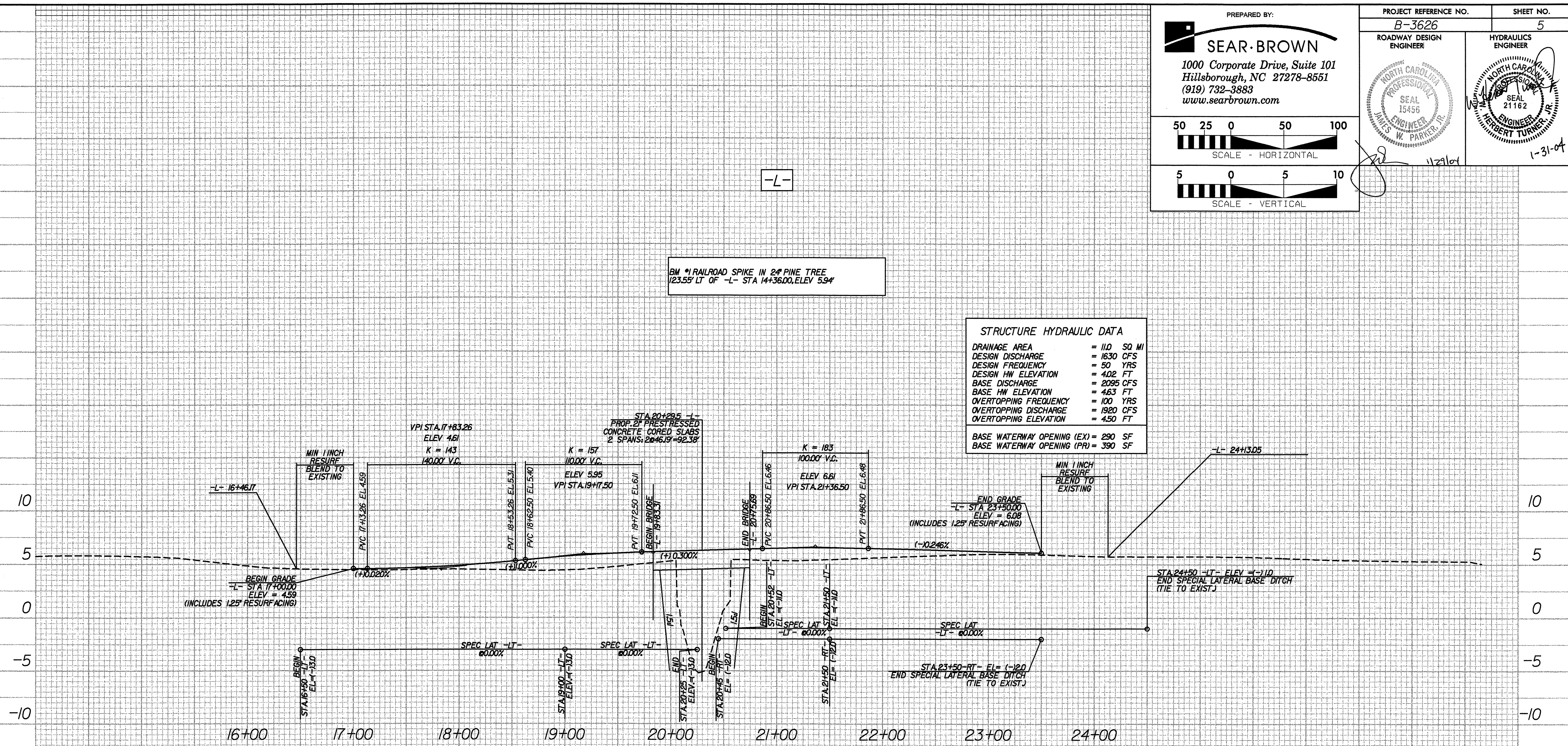
PREPARED BY:
SEAR·BROWN
 1000 Corporate Drive, Suite 101
 Hillsborough, NC 27278-8551
 (919) 732-3883
 www.searbrown.com



PROJECT REFERENCE NO. B-3626	SHEET NO. 5
ROADWAY DESIGN ENGINEER	HYDRAULICS ENGINEER

BM #1 RAILROAD SPIKE IN 2" PINE TREE
 123.55' LT OF -L- STA 14+36.00, ELEV 5.94

STRUCTURE HYDRAULIC DATA	
DRAINAGE AREA	= 110 SQ MI
DESIGN DISCHARGE	= 1630 CFS
DESIGN FREQUENCY	= 50 YRS
DESIGN HW ELEVATION	= 402 FT
BASE DISCHARGE	= 2095 CFS
BASE HW ELEVATION	= 463 FT
OVERTOPPING FREQUENCY	= 100 YRS
OVERTOPPING DISCHARGE	= 1920 CFS
OVERTOPPING ELEVATION	= 450 FT
BASE WATERWAY OPENING (EX) = 290 SF	
BASE WATERWAY OPENING (PR) = 390 SF	



FOR -L- PLANS SEE SHEET 4.
 SEE STRUCTURE PLANS SITHRU S.