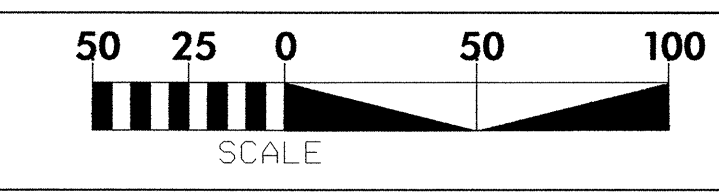
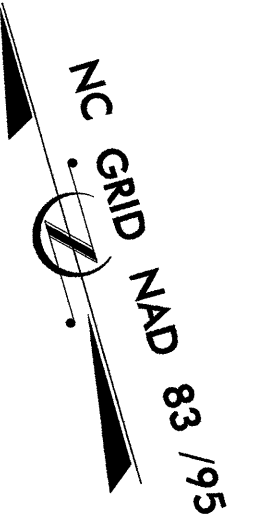


PROJECT REFERENCE NO. B-3626		SHEET NO. EC-3/CONST.4	
RW SHEET NO.			
ROADWAY DESIGN ENGINEER		HYDRAULICS ENGINEER	



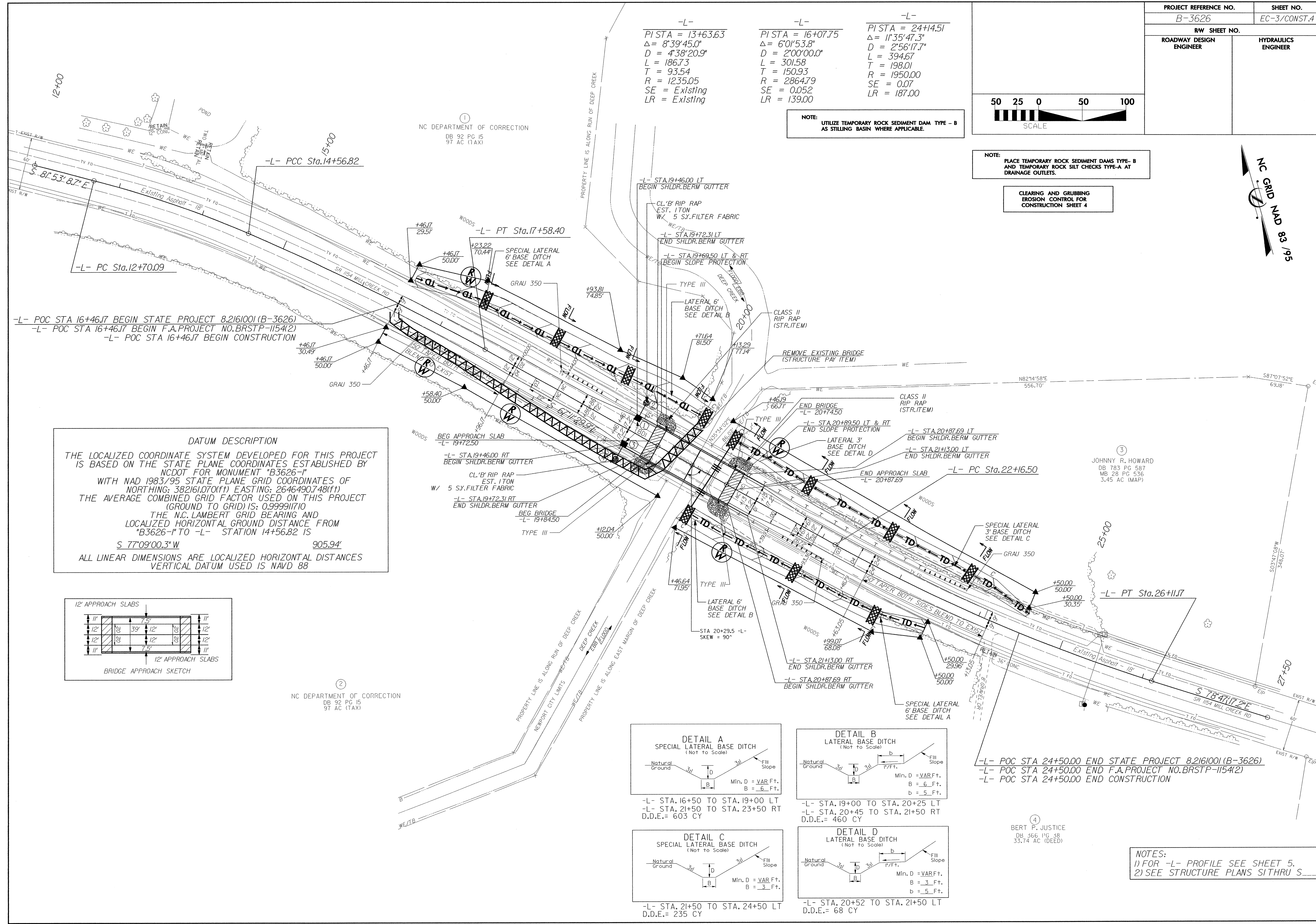
NOTE: PLACE TEMPORARY ROCK SEDIMENT DAMS TYPE-B AND TEMPORARY ROCK SILT CHECKS TYPE-A AT DRAINAGE OUTLETS.

CLEARING AND GRUBBING EROSION CONTROL FOR CONSTRUCTION SHEET 4

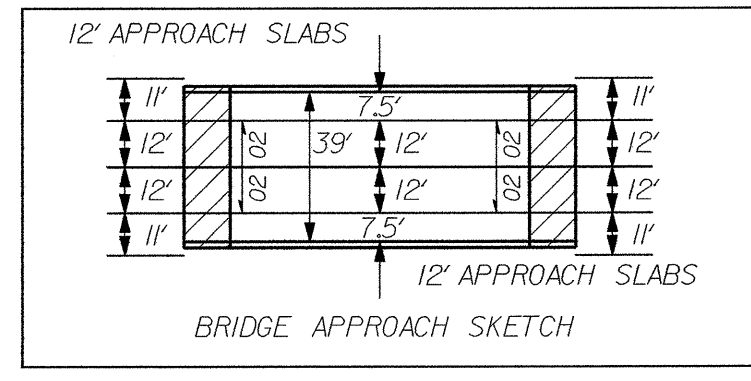


-L-	-L-	-L-
PI STA = 13+63.63 Δ = 8°39'45.0" D = 4°38'20.9" L = 186.73 T = 93.54 R = 1235.05 SE = Existing LR = Existing	PI STA = 16+07.75 Δ = 6°01'53.8" D = 2°00'00.0" L = 301.58 T = 150.93 R = 2864.79 SE = 0.052 LR = 139.00	PI STA = 24+14.51 Δ = 1°35'47.3" D = 2°56'17.7" L = 394.67 T = 198.01 R = 1950.00 SE = 0.07 LR = 187.00

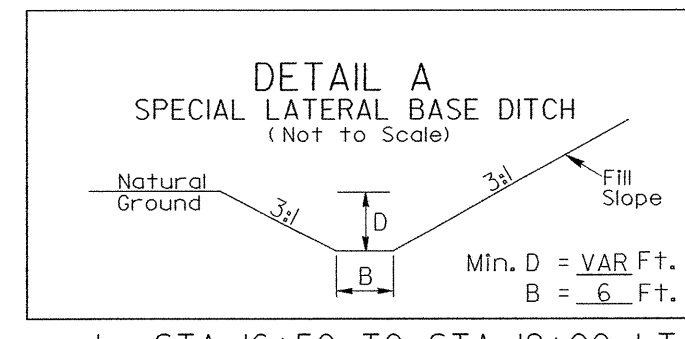
NOTE: UTILIZE TEMPORARY ROCK SEDIMENT DAM TYPE - B AS STILLING BASIN WHERE APPLICABLE.



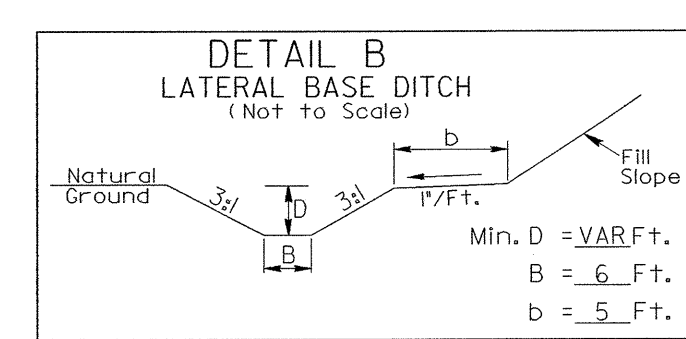
DATUM DESCRIPTION
 THE LOCALIZED COORDINATE SYSTEM DEVELOPED FOR THIS PROJECT IS BASED ON THE STATE PLANE COORDINATES ESTABLISHED BY NCDOT FOR MONUMENT "B3626-1" WITH NAD 1983/95 STATE PLANE GRID COORDINATES OF NORTHING: 382161.070(ft) EASTING: 2646490.748(ft) THE AVERAGE COMBINED GRID FACTOR USED ON THIS PROJECT (GROUND TO GRID) IS: 0.999911710 THE N.C. LAMBERT GRID BEARING AND LOCALIZED HORIZONTAL GROUND DISTANCE FROM "B3626-1" TO -L- STATION 14+56.82 IS
 S 77°09'00.3"W 905.94'
 ALL LINEAR DIMENSIONS ARE LOCALIZED HORIZONTAL DISTANCES VERTICAL DATUM USED IS NAVD 88



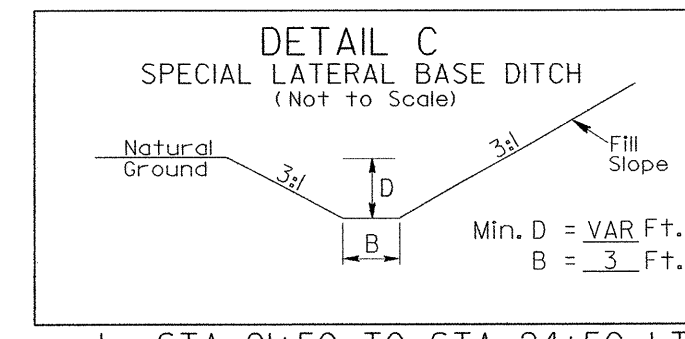
NC DEPARTMENT OF CORRECTION
 DB 92 PG 15
 97 AC (TAX)



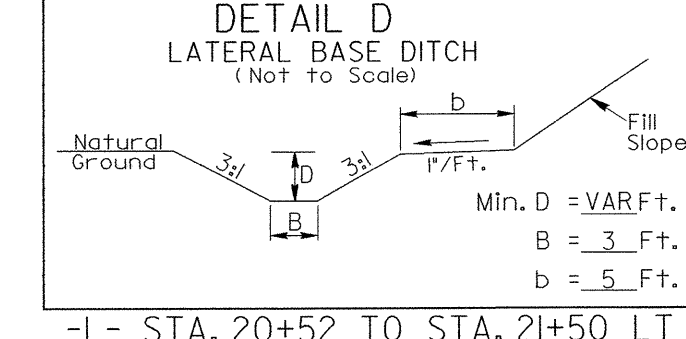
-L- STA. 16+50 TO STA. 19+00 LT
 -L- STA. 21+50 TO STA. 23+50 RT
 D.D.E. = 603 CY



-L- STA. 19+00 TO STA. 20+25 LT
 -L- STA. 20+45 TO STA. 21+50 RT
 D.D.E. = 460 CY



-L- STA. 21+50 TO STA. 24+50 LT
 D.D.E. = 235 CY



-L- STA. 20+52 TO STA. 21+50 LT
 D.D.E. = 68 CY

-L- POC STA 24+50.00 END STATE PROJECT 8.2161001(B-3626)
 -L- POC STA 24+50.00 END F.A. PROJECT NO. BRSTP-1154(2)
 -L- POC STA 24+50.00 END CONSTRUCTION

BERT P. JUSTICE
 DB 366 PG 38
 33.74 AC (DEED)

NOTES:
 1) FOR -L- PROFILE SEE SHEET 5.
 2) SEE STRUCTURE PLANS SITHRU S...