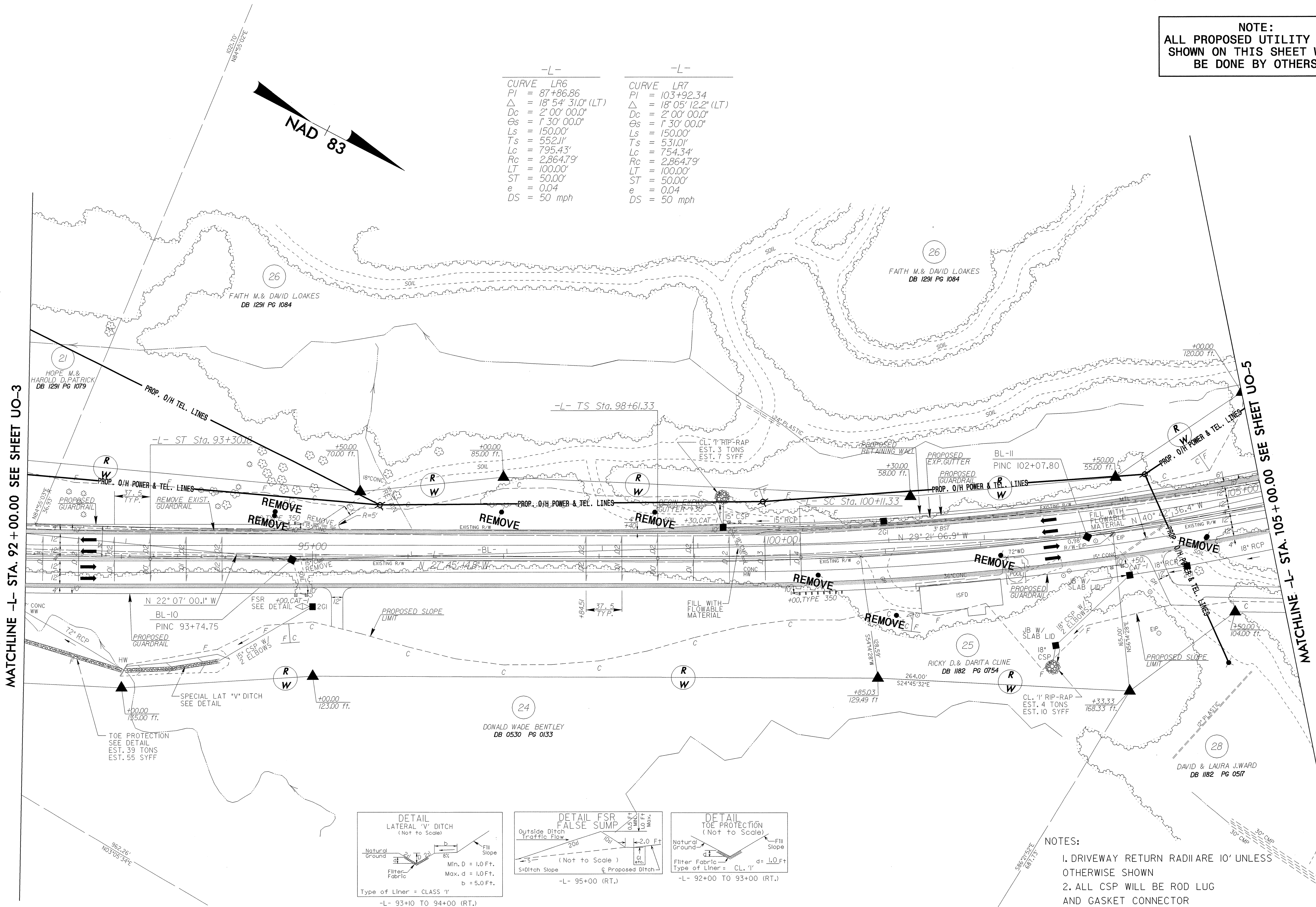
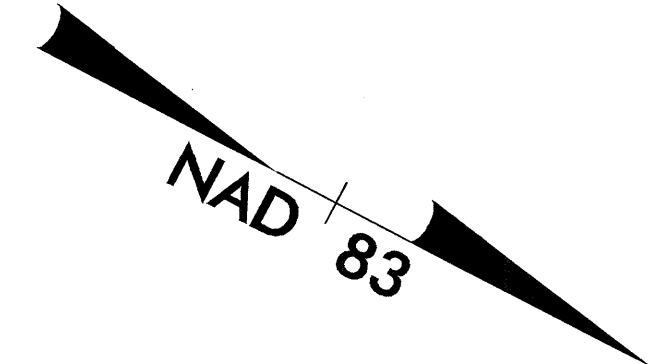


UTILITIES BY OTHERS

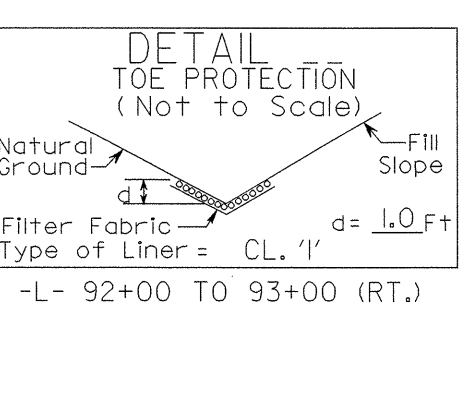
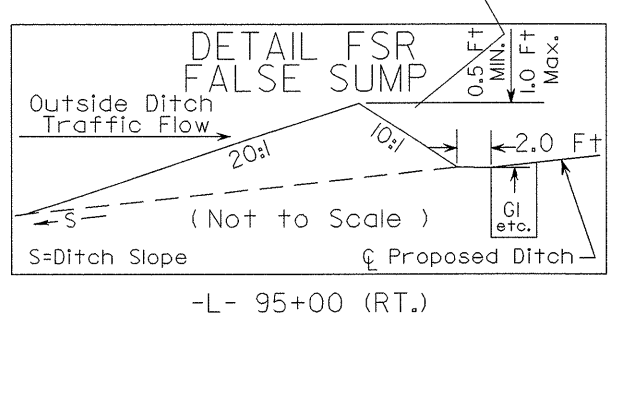
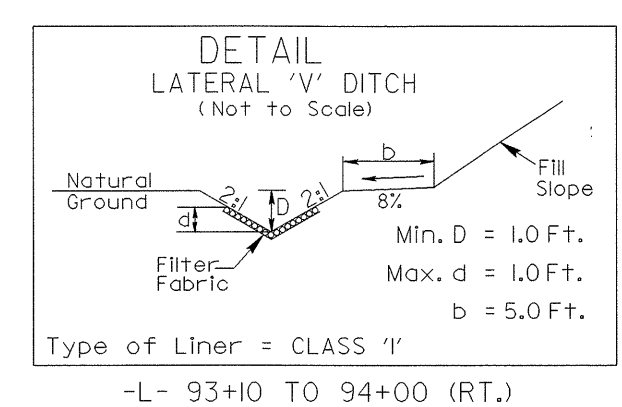
NOTE:
ALL PROPOSED UTILITY WORK
SHOWN ON THIS SHEET WILL
BE DONE BY OTHERS

-L-		-L-	
CURVE	LR6	CURVE	LR7
PI	= 87+86.86	PI	= 103+92.34
Δ	= 18° 54' 31.0" (LT)	Δ	= 18° 05' 12.2" (LT)
Dc	= 2' 00' 00.0"	Dc	= 2' 00' 00.0"
Θs	= 1' 30' 00.0"	Θs	= 1' 30' 00.0"
Ls	= 150.00'	Ls	= 150.00'
Ts	= 552.11'	Ts	= 531.01'
Lc	= 795.43'	Lc	= 754.34'
Rc	= 2,864.79'	Rc	= 2,864.79'
LT	= 100.00'	LT	= 100.00'
ST	= 50.00'	ST	= 50.00'
e	= 0.04	e	= 0.04
DS	= 50 mph	DS	= 50 mph



MATCHLINE -L- STA. 92 + 00.00 SEE SHEET UO-3

MATCHLINE -L- STA. 105 + 00.00 SEE SHEET UO-5



- NOTES:
1. DRIVEWAY RETURN RADII ARE 10' UNLESS OTHERWISE SHOWN
 2. ALL CSP WILL BE ROD LUG AND GASKET CONNECTOR

REFERENCES:
FOR -L- PROFILE SEE SHEET 39

8/17/99
01-SEP-2004 15:40 J:\Projects\NR-2237b\ut.uo_04psh_11.dgn
E:\Utilities\1185214777