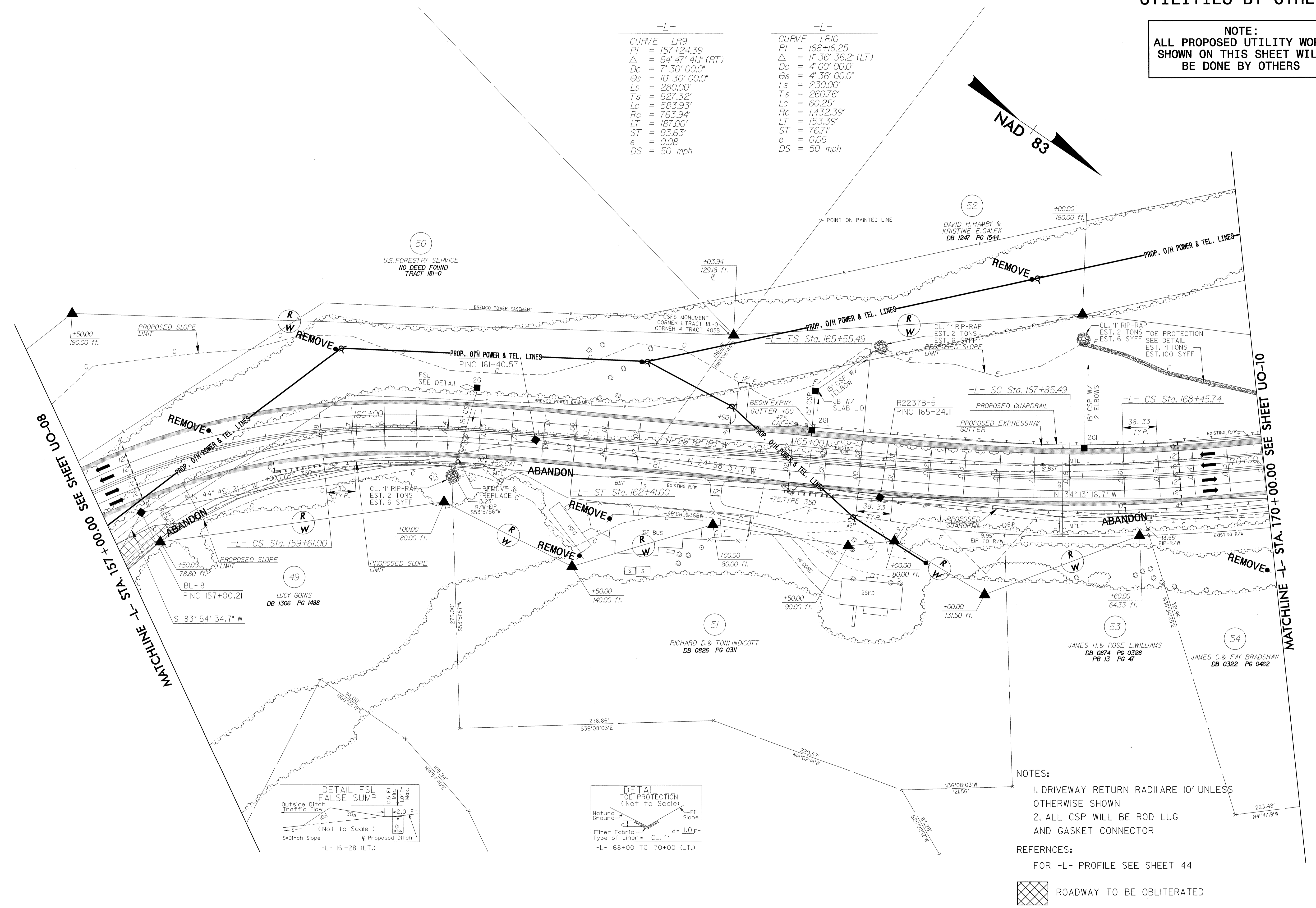
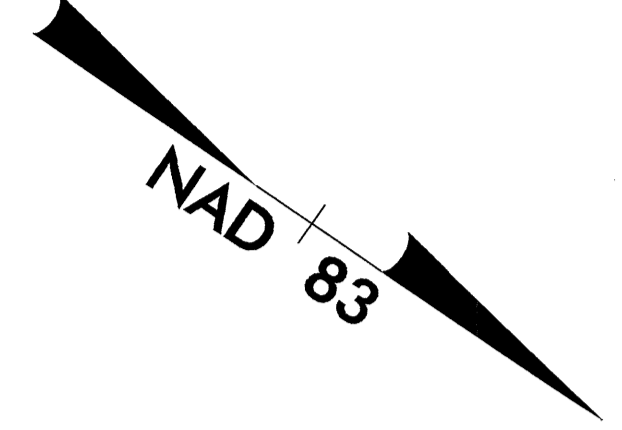


UTILITIES BY OTHERS

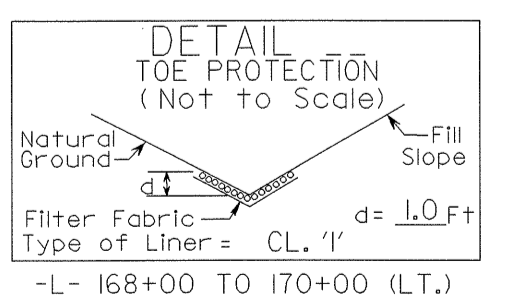
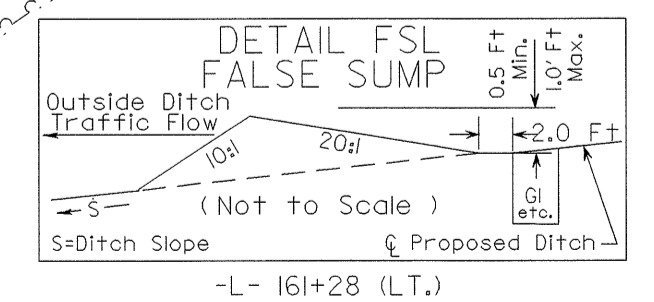
NOTE:
ALL PROPOSED UTILITY WORK SHOWN ON THIS SHEET WILL BE DONE BY OTHERS

-L-		-L-	
CURVE	LR9	CURVE	LR10
PI	= 157+24.39	PI	= 168+16.25
Δ	= 64° 47' 41" (RT)	Δ	= 11° 36' 36.2" (LT)
Dc	= 7' 30' 00.0"	Dc	= 4' 00' 00.0"
Θs	= 10' 30' 00.0"	Θs	= 4' 36' 00.0"
Ls	= 280.00'	Ls	= 230.00'
Ts	= 627.32'	Ts	= 260.76'
Lc	= 583.93'	Lc	= 60.25'
Rc	= 763.94'	Rc	= 1,432.39'
LT	= 187.00'	LT	= 153.39'
ST	= 93.63'	ST	= 76.71'
e	= 0.08	e	= 0.06
DS	= 50 mph	DS	= 50 mph



MATCHLINE -L- STA 157+00.00 SEE SHEET UO-08

MATCHLINE -L- STA. 170+00.00 SEE SHEET UO-10



NOTES:
 1. DRIVEWAY RETURN RADII ARE 10' UNLESS OTHERWISE SHOWN
 2. ALL CSP WILL BE ROD LUG AND GASKET CONNECTOR

REFERENCES:
 FOR -L- PROFILE SEE SHEET 44

ROADWAY TO BE OBLITERATED