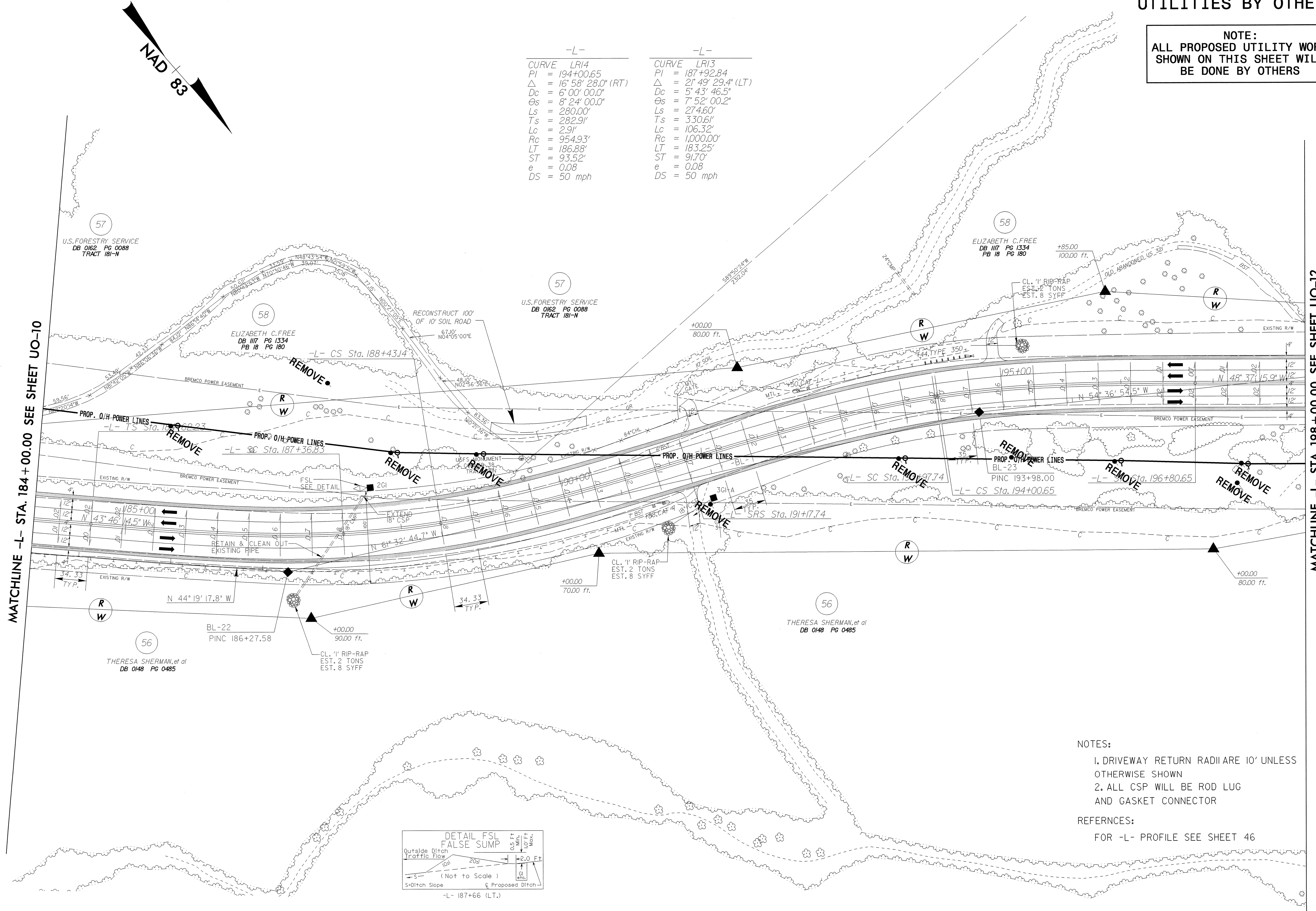


UTILITIES BY OTHERS

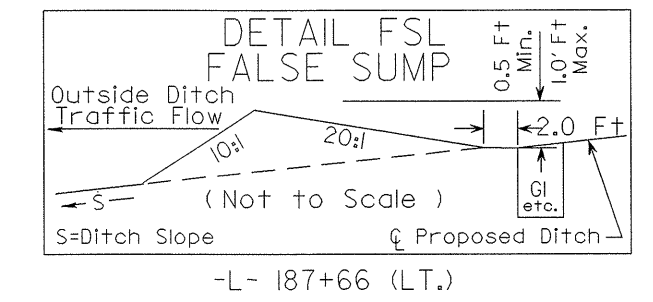
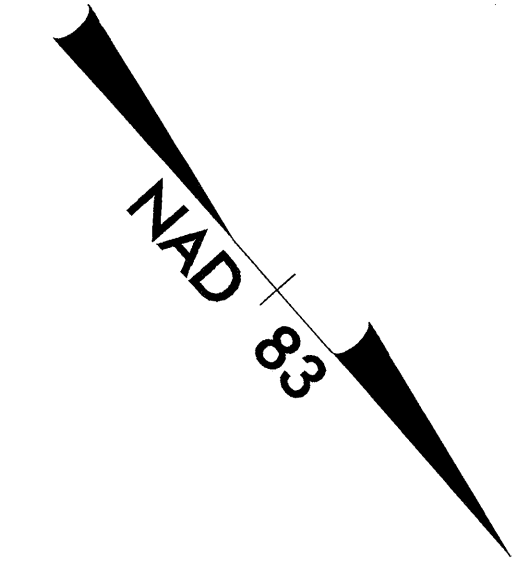
NOTE:
ALL PROPOSED UTILITY WORK
SHOWN ON THIS SHEET WILL
BE DONE BY OTHERS

-L-		-L-	
CURVE	LRI4	CURVE	LRI3
PI	= 194+00.65	PI	= 187+92.84
Δ	= 16° 58' 28.0" (RT)	Δ	= 2° 49' 29.4" (LT)
Dc	= 6' 00' 00.0"	Dc	= 5' 43' 46.5"
Θs	= 8° 24' 00.0"	Θs	= 7° 52' 00.2"
Ls	= 280.00'	Ls	= 274.60'
Ts	= 282.91'	Ts	= 330.61'
Lc	= 2.91'	Lc	= 106.32'
Rc	= 954.93'	Rc	= 1,000.00'
LT	= 186.88'	LT	= 183.25'
ST	= 93.52'	ST	= 91.70'
e	= 0.08	e	= 0.08
DS	= 50 mph	DS	= 50 mph



MATCHLINE -L- STA. 184+00.00 SEE SHEET UO-10

MATCHLINE -L- STA. 198+00.00 SEE SHEET UO-12



- NOTES:
1. DRIVEWAY RETURN RADII ARE 10' UNLESS OTHERWISE SHOWN
 2. ALL CSP WILL BE ROD LUG AND GASKET CONNECTOR
- REFERENCES:
FOR -L- PROFILE SEE SHEET 46

8/17/99
0:\SEP-2004\1531\UT\psh\NR-2237b_ut_uo_11psh_18.dgn
PLN:UT\psh\NR-2237b_ut_uo_11psh_18.dgn
INS:UT\psh\NR-2237b_ut_uo_11psh_18.dgn