

UTILITIES BY OTHERS

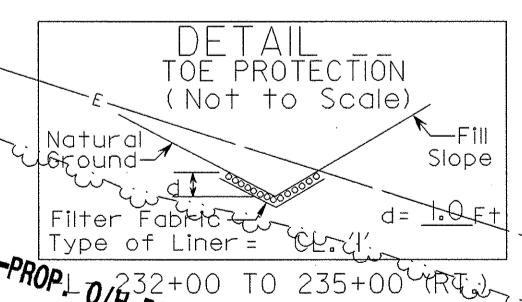
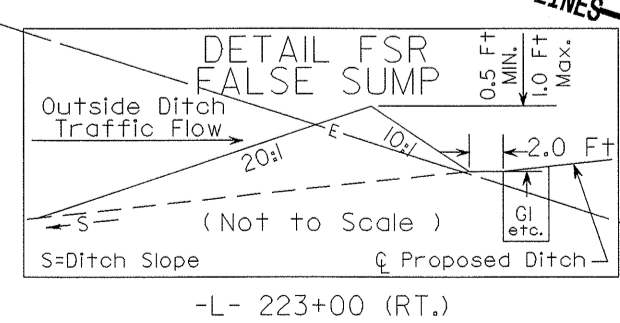
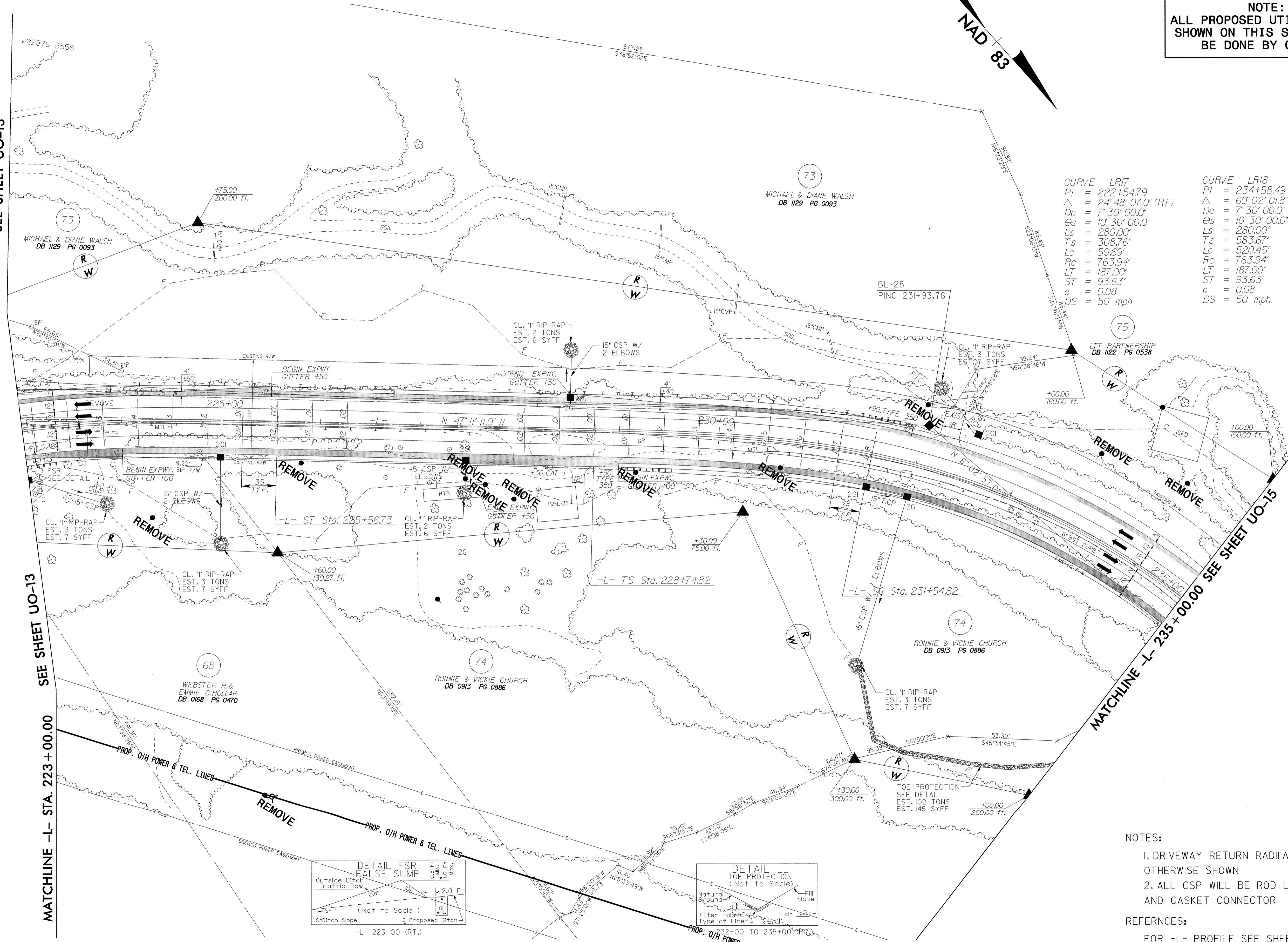
NOTE:
ALL PROPOSED UTILITY WORK
SHOWN ON THIS SHEET WILL
BE DONE BY OTHERS

CURVE LR17	CURVE LR18
PI = 222+54.79	PI = 234+58.49
Δ = 24° 48' 07.0" (RT)	Δ = 60° 02' 01.8" (RT)
Dc = 7' 30' 00.0"	Dc = 7' 30' 00.0"
Θs = 10° 30' 00.0"	Θs = 10° 30' 00.0"
Ls = 280.00'	Ls = 280.00'
Ts = 308.76'	Ts = 583.67'
Lc = 50.69'	Lc = 520.45'
Rc = 763.94'	Rc = 763.94'
LT = 187.00'	LT = 187.00'
ST = 93.63'	ST = 93.63'
e = 0.08	e = 0.08
DS = 50 mph	DS = 50 mph

MATCHLINE -L- STA. 223+00.00
SEE SHEET UO-13

MATCHLINE -L- STA. 223+00.00
SEE SHEET UO-13

MATCHLINE -L- STA. 235+00.00
SEE SHEET UO-15



- NOTES:**
1. DRIVEWAY RETURN RADII ARE 10' UNLESS OTHERWISE SHOWN
 2. ALL CSP WILL BE ROD LUG AND GASKET CONNECTOR
- REFERENCES:**
- FOR -L- PROFILE SEE SHEET 49

8/17/99
01SEP-2004 16:31 U:\Projects\R-2237b\ut_uo_14psh_21.dgn
D:\UT\14psh_21.dgn
Author: A