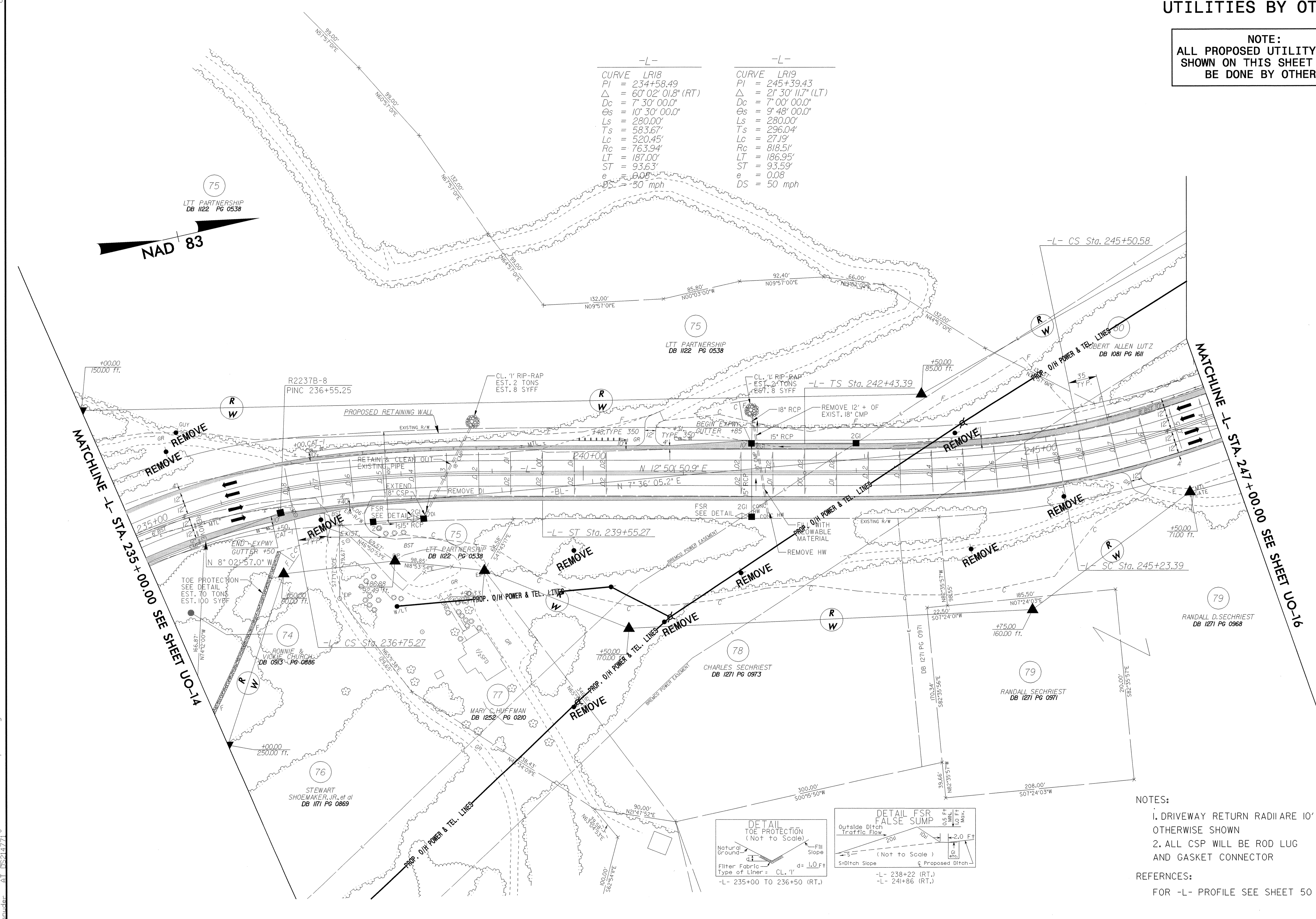


UTILITIES BY OTHERS

NOTE:
ALL PROPOSED UTILITY WORK SHOWN ON THIS SHEET WILL BE DONE BY OTHERS

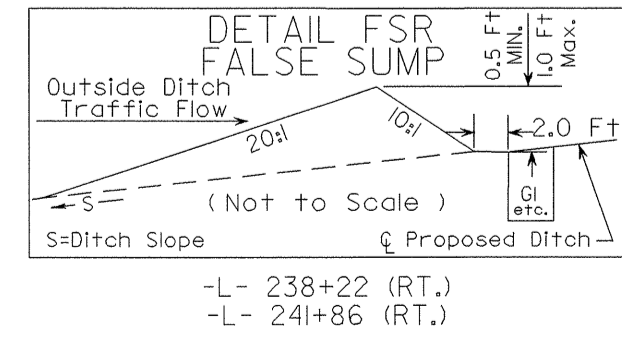
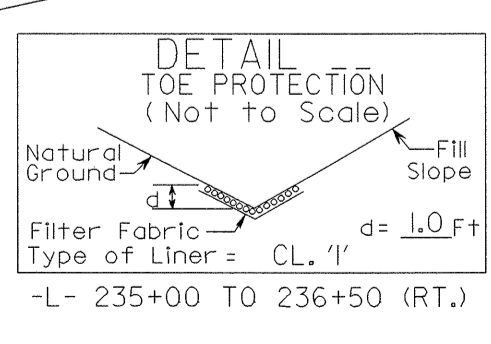
-L-		-L-	
CURVE	LR18	CURVE	LR19
PI	= 234+58.49	PI	= 245+39.43
Δ	= 60° 02' 01.8" (RT)	Δ	= 21° 30' 11.7" (LT)
Dc	= 7° 30' 00.0"	Dc	= 7° 00' 00.0"
Es	= 10° 30' 00.0"	Es	= 9° 48' 00.0"
Ls	= 280.00'	Ls	= 280.00'
Ts	= 583.67'	Ts	= 296.04'
Lc	= 520.45'	Lc	= 27.19'
Rc	= 763.94'	Rc	= 818.51'
LT	= 187.00'	LT	= 186.95'
ST	= 93.63'	ST	= 93.59'
e	= 0.08	e	= 0.08
DS	= 50 mph	DS	= 50 mph



NAD 83

MATCHLINE -L- STA. 235+00.00 SEE SHEET UO-14

MATCHLINE -L- STA. 247+00.00 SEE SHEET UO-16



- NOTES:
1. DRIVEWAY RETURN RADII ARE 10' UNLESS OTHERWISE SHOWN
 2. ALL CSP WILL BE ROD LUG AND GASKET CONNECTOR
- REFERENCES:
FOR -L- PROFILE SEE SHEET 50

8/17/99
 01:56P:2004 15:30 J:\Projects\2237b-ut_uo_15psh_22.dgn
 CL:\H1\Tobias\2237b-ut_uo_15psh_22.dgn
 15:30 J:\Projects\2237b-ut_uo_15psh_22.dgn
 8/17/99