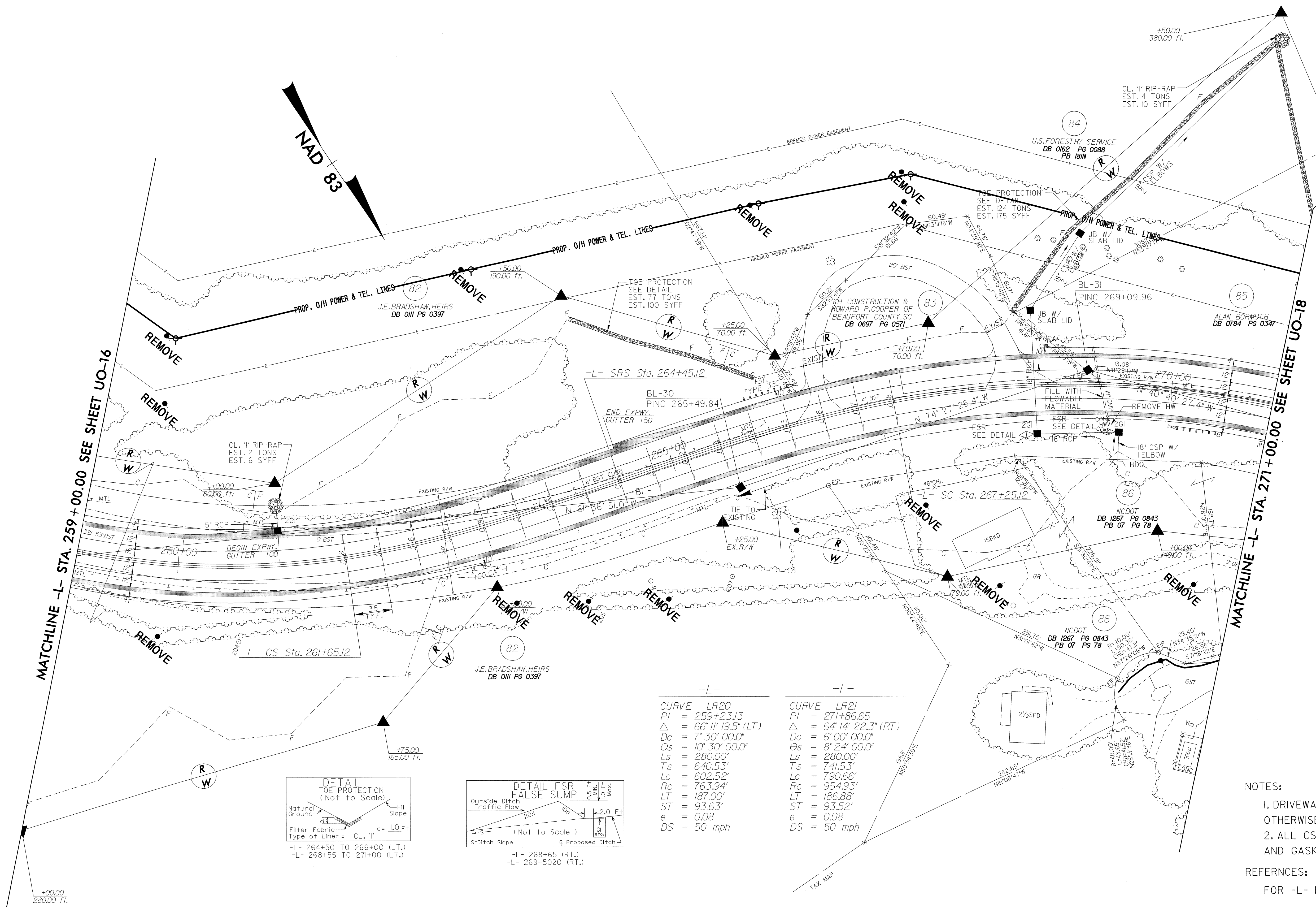


UTILITIES BY OTHERS

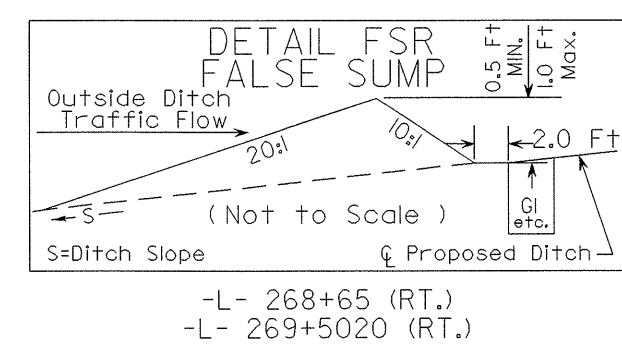
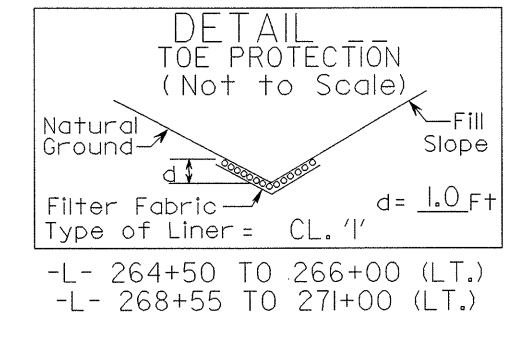
NOTE:  
ALL PROPOSED UTILITY WORK  
SHOWN ON THIS SHEET WILL  
BE DONE BY OTHERS



MATCHLINE -L- STA. 259+00.00 SEE SHEET UO-16

MATCHLINE -L- STA. 271+00.00 SEE SHEET UO-18

| -L-   |                      | -L-   |                      |
|-------|----------------------|-------|----------------------|
| CURVE | LR20                 | CURVE | LR21                 |
| PI    | = 259+23.13          | PI    | = 271+86.65          |
| Δ     | = 66° 11' 19.5" (LT) | Δ     | = 64° 14' 22.3" (RT) |
| Dc    | = 7' 30' 00.0"       | Dc    | = 6' 00' 00.0"       |
| Es    | = 10' 30' 00.0"      | Es    | = 8' 24' 00.0"       |
| Ls    | = 280.00'            | Ls    | = 280.00'            |
| Ts    | = 640.53'            | Ts    | = 741.53'            |
| Lc    | = 602.52'            | Lc    | = 790.66'            |
| Rc    | = 763.94'            | Rc    | = 954.93'            |
| LT    | = 187.00'            | LT    | = 186.88'            |
| ST    | = 93.63'             | ST    | = 93.52'             |
| e     | = 0.08               | e     | = 0.08               |
| DS    | = 50 mph             | DS    | = 50 mph             |



NOTES:  
1. DRIVEWAY RETURN RADII ARE 10' UNLESS OTHERWISE SHOWN  
2. ALL CSP WILL BE ROD LUG AND GASKET CONNECTOR

REFERENCES:  
FOR -L- PROFILE SEE SHEET 52

8/17/99  
01:SEP\_2004 15:25 U:\Projects\R-2237b-ut-UO-17\psh-24.dgn  
DS214771