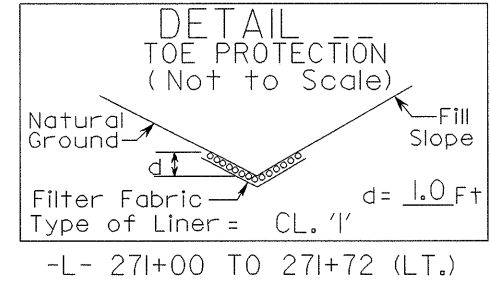
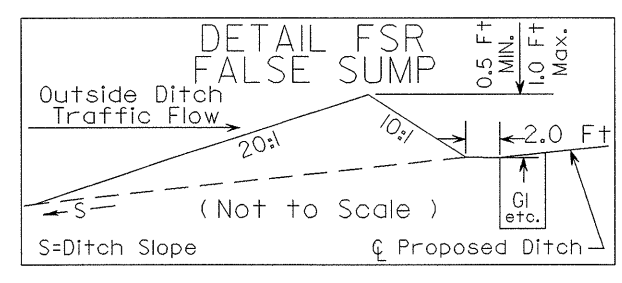


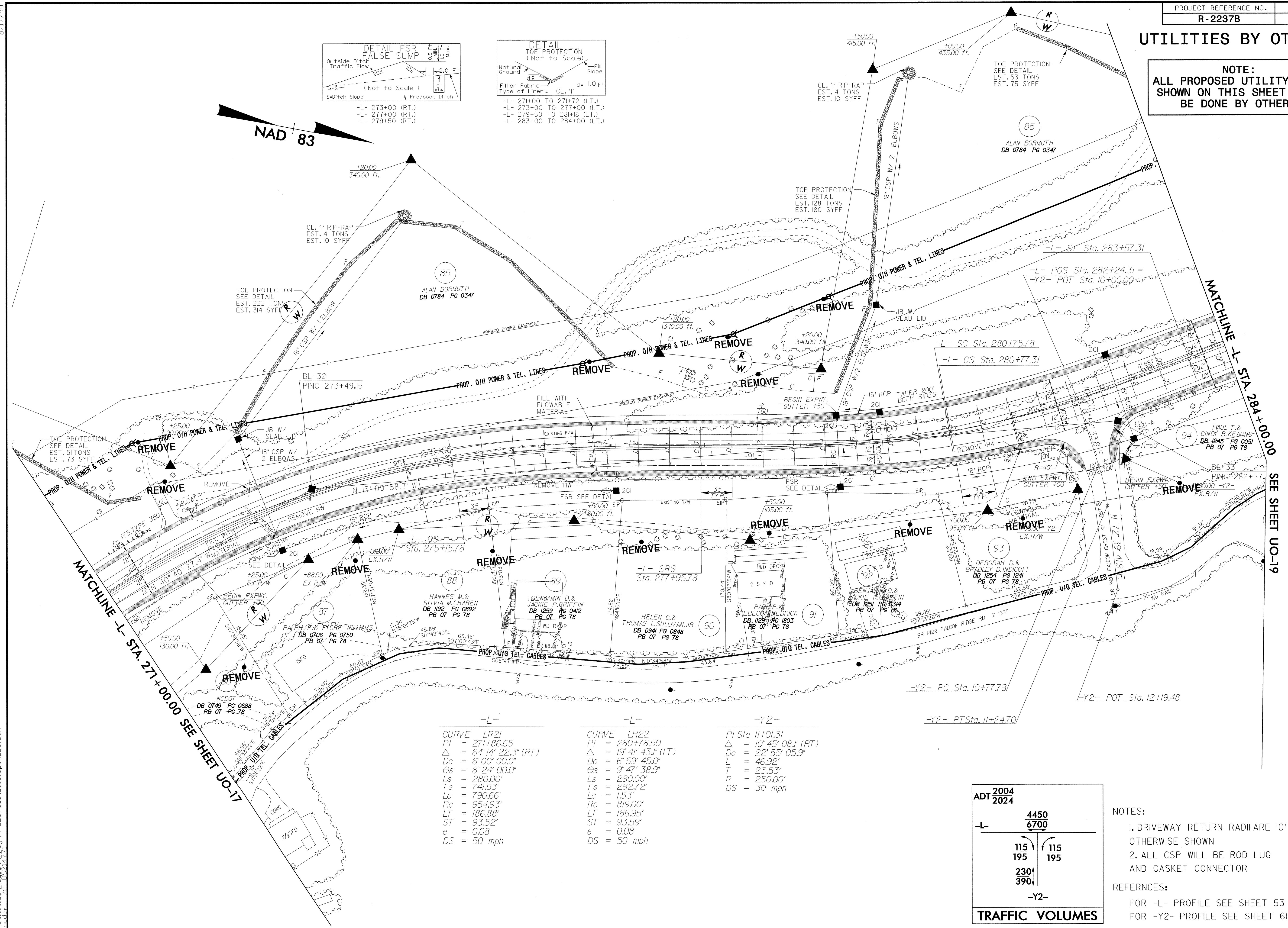
UTILITIES BY OTHERS

NOTE:  
ALL PROPOSED UTILITY WORK SHOWN ON THIS SHEET WILL BE DONE BY OTHERS



- L- 273+00 (RT.)
- L- 277+00 (RT.)
- L- 279+50 (RT.)
- L- 271+00 TO 271+72 (LT.)
- L- 273+00 TO 277+00 (LT.)
- L- 279+50 TO 281+18 (LT.)
- L- 283+00 TO 284+00 (LT.)

NAD 83



-L-		-L-		-Y2-	
CURVE	LR21	CURVE	LR22	PI	Sta 11+01.31
PI	= 271+86.65	PI	= 280+78.50	Δ	= 10° 45' 08.1" (RT.)
Δ	= 64° 14' 22.3" (RT)	Δ	= 19° 41' 43.1" (LT)	Dc	= 22° 55' 05.9"
Dc	= 6' 00' 00.0"	Dc	= 6' 59' 45.0"	L	= 46.92'
Θs	= 8' 24' 00.0"	Θs	= 9' 47' 38.9"	T	= 23.53'
Ls	= 280.00'	Ls	= 280.00'	R	= 250.00'
Ts	= 741.53'	Ts	= 282.72'	DS	= 50 mph
Lc	= 790.66'	Lc	= 15.3'		
Rc	= 954.93'	Rc	= 819.00'		
LT	= 186.88'	LT	= 186.95'		
ST	= 93.52'	ST	= 93.53'		
e	= 0.08	e	= 0.08		
DS	= 50 mph	DS	= 50 mph		

ADT 2004 2024	
-L-	4450 6700
	115 195   115 195
	230 390
-Y2-	
TRAFFIC VOLUMES	

NOTES:  
1. DRIVEWAY RETURN RADII ARE 10' UNLESS OTHERWISE SHOWN  
2. ALL CSP WILL BE ROD LUG AND GASKET CONNECTOR

REFERENCES:  
FOR -L- PROFILE SEE SHEET 53  
FOR -Y2- PROFILE SEE SHEET 61

8/17/99  
01 SEP 2004 15:25 H:\P\proj\R-2237b\_ut\_uo\_18psh\_25.dgn  
responder