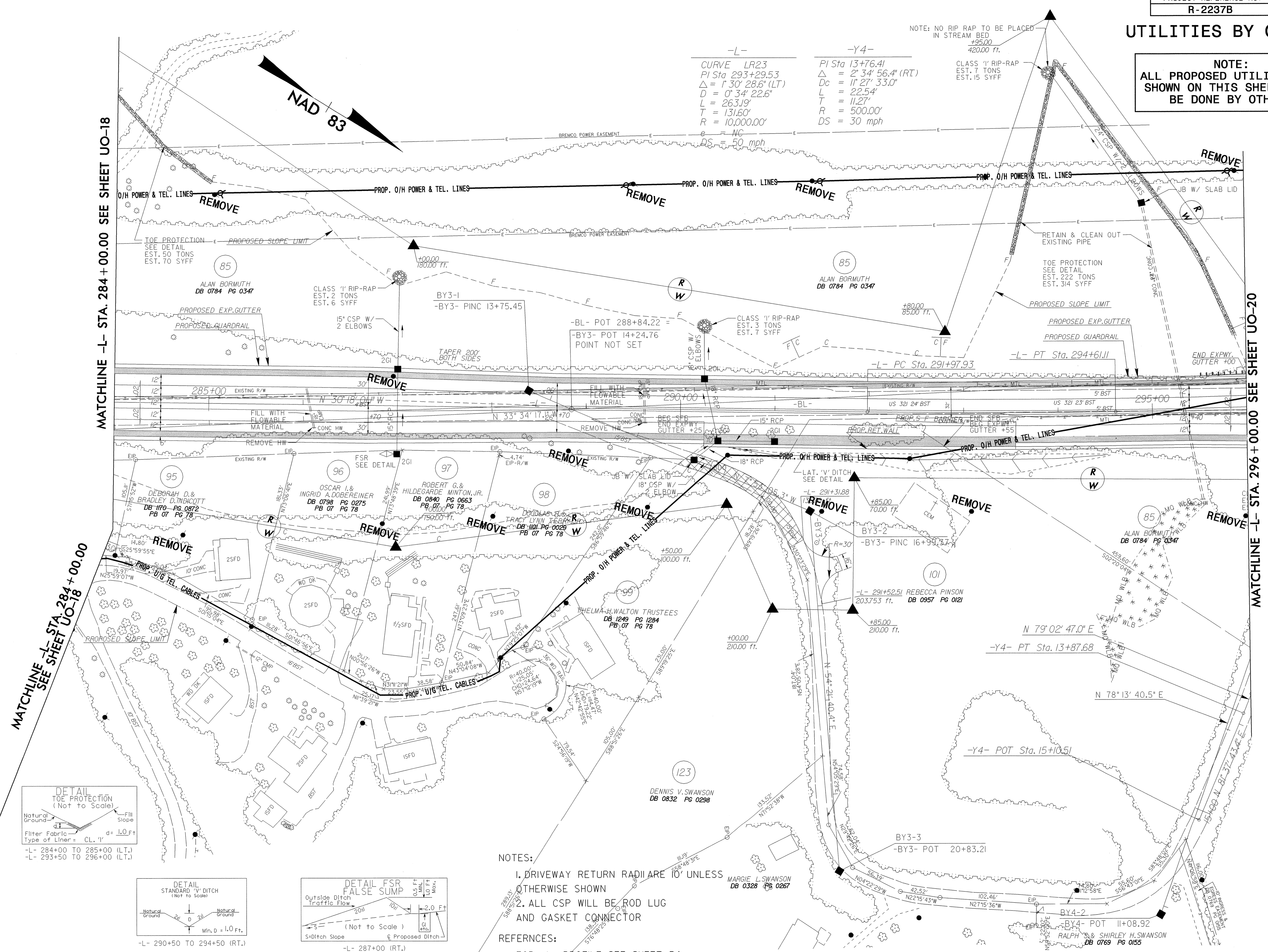


UTILITIES BY OTHERS

NOTE:
ALL PROPOSED UTILITY WORK
SHOWN ON THIS SHEET WILL
BE DONE BY OTHERS

-L-	-Y4-
CURVE LR23	PI Sta 13+76.41
PI Sta 293+29.53	$\Delta = 2' 34" 56.4" (RT)$
$\Delta = 1' 30" 28.6" (LT)$	$Dc = 1' 27" 33.0"$
$D = 0' 34" 22.6"$	$L = 22.54'$
$L = 263.19'$	$T = 11.27'$
$T = 131.60'$	$R = 500.00'$
$R = 10,000.00'$	$DS = 30 \text{ mph}$
$AS = 50 \text{ mph}$	

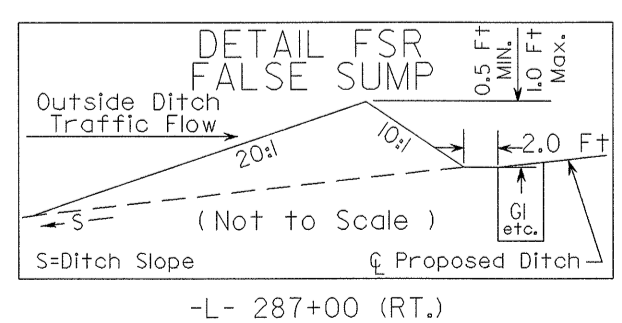
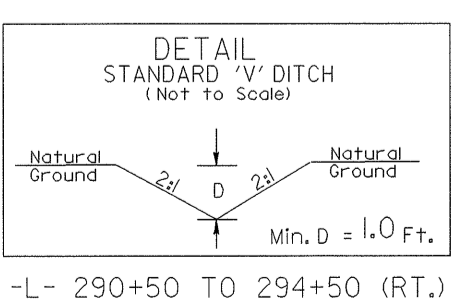
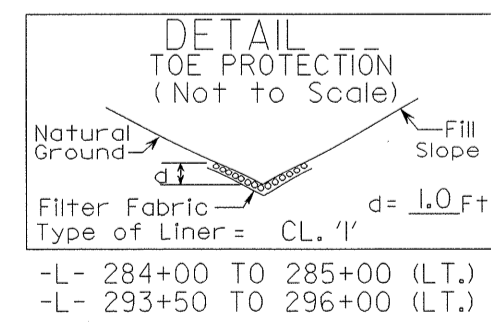
NOTE: NO RIP RAP TO BE PLACED
IN STREAM BED
+95.00
420.00 ft.



MATCHLINE -L- STA. 284+00.00 SEE SHEET UO-18

MATCHLINE -L- STA. 296+00.00 SEE SHEET UO-20

MATCHLINE -L- STA. 284+00.00
SEE SHEET UO-18



- NOTES:
1. DRIVEWAY RETURN RADII ARE TO UNLESS OTHERWISE SHOWN
 2. ALL CSP WILL BE ROD LUG AND GASKET CONNECTOR

REFERENCES:
FOR -L- PROFILE SEE SHEET 54
FOR -Y3- PROFILE SEE SHEET 62

8/17/99
01/25/2004 15:25 H:\Projects\R-2237b_ut.UO_19psh_26.dgn
A:\Projects\R-2237b_ut.UO_19psh_26.dgn