

UTILITIES BY OTHERS

NOTE:
ALL PROPOSED UTILITY WORK
SHOWN ON THIS SHEET WILL
BE DONE BY OTHERS

ADT 2004
2024

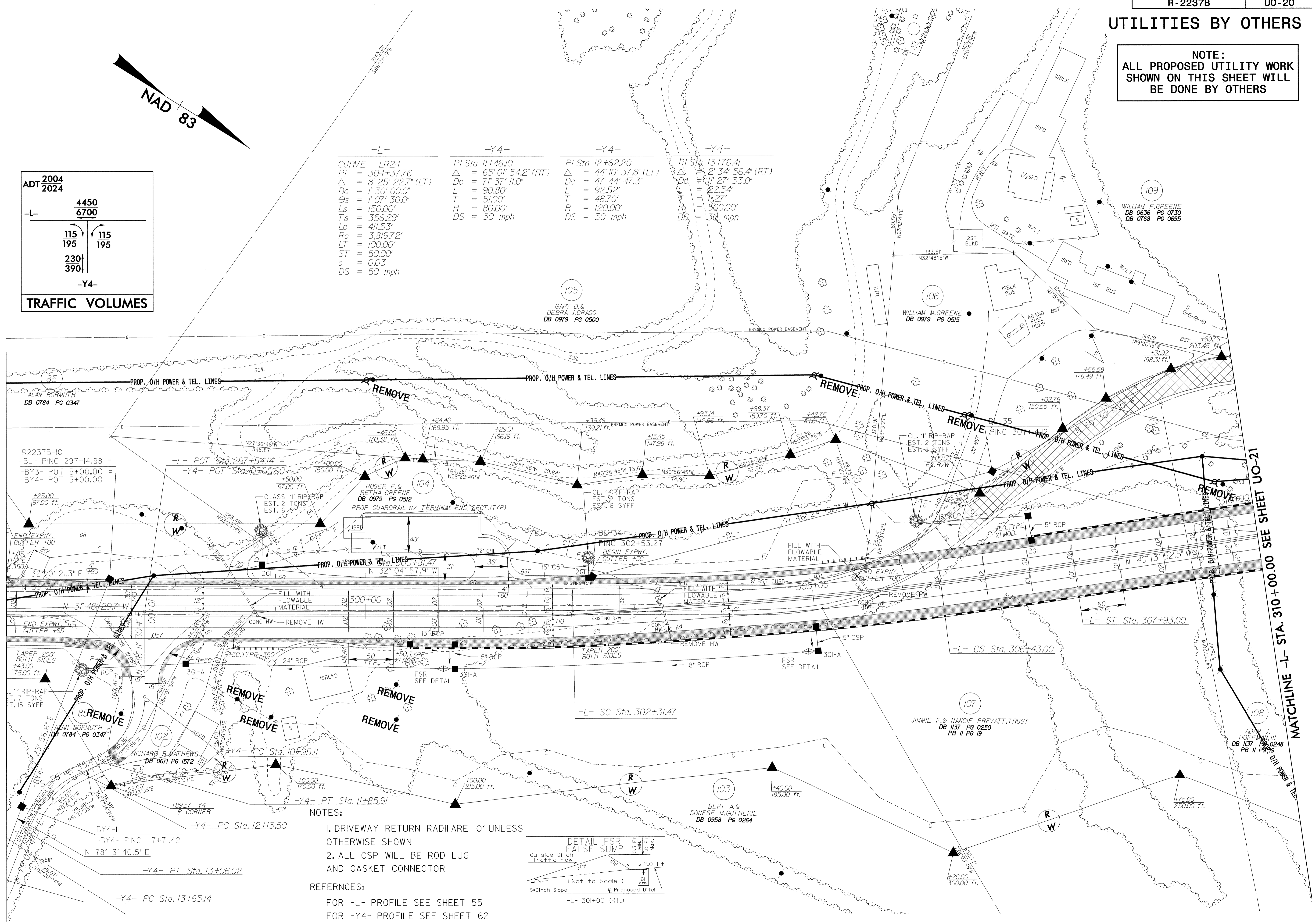
-L-	4450	6700
115	115	115
195	195	195
230	390	
		-Y4-

TRAFFIC VOLUMES

-L-	-Y4-	-Y4-	-Y4-
CURVE LR24	PI Sta 11+46.10	PI Sta 12+62.20	PI Sta 13+76.41
PI = 304+37.76	Δ = 65° 01' 54.2" (RT)	Δ = 44° 10' 37.6" (LT)	Δ = 2° 34' 56.4" (RT)
Δ = 8° 25' 22.7" (LT)	Dc = 71' 37" 11.0"	Dc = 47' 44' 47.3"	Dc = 11' 27' 33.0"
Dc = 1' 30' 00.0"	L = 90.80'	L = 92.52'	L = 22.54'
Os = 1' 07' 30.0"	T = 51.00'	T = 48.70'	T = 7.27'
Ls = 150.00'	R = 80.00'	R = 120.00'	R = 500.00'
Ts = 356.29'	DS = 30 mph	DS = 30 mph	DS = 30 mph
Lc = 411.53'			
Rc = 3,819.72'			
LT = 100.00'			
ST = 50.00'			
e = 0.03			
DS = 50 mph			

MATCHLINE -L- STA. 296+00.00 SEE SHEET UO-19

MATCHLINE -L- STA. 310+00.00 SEE SHEET UO-21



R2237B-10
-BL- PINC 297+14.98 =
-BY3- POT 5+00.00 =
-BY4- POT 5+00.00

-L- POT Sta. 297+54.14 =
-Y4- POT Sta. 107+00.00

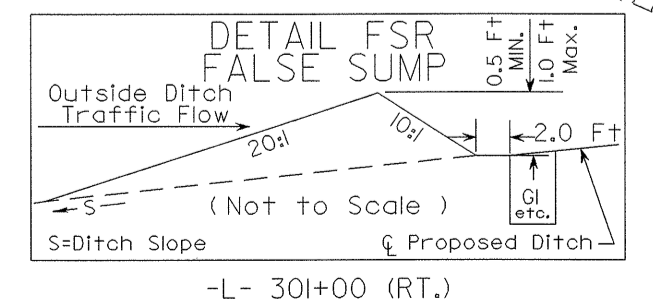
-L- ST Sta. 307+93.00

-L- CS Sta. 306+43.00

-L- SC Sta. 302+31.47

NOTES:
1. DRIVEWAY RETURN RADIARE 10' UNLESS OTHERWISE SHOWN
2. ALL CSP WILL BE ROD LUG AND GASKET CONNECTOR

REFERENCES:
FOR -L- PROFILE SEE SHEET 55
FOR -Y4- PROFILE SEE SHEET 62



8/17/99
 01 SEP 2004 15:25
 C:\TECH\Drawings\2237b-ut_uo_20psh_27.dgn
 11:14:17 AM
 11/17/99