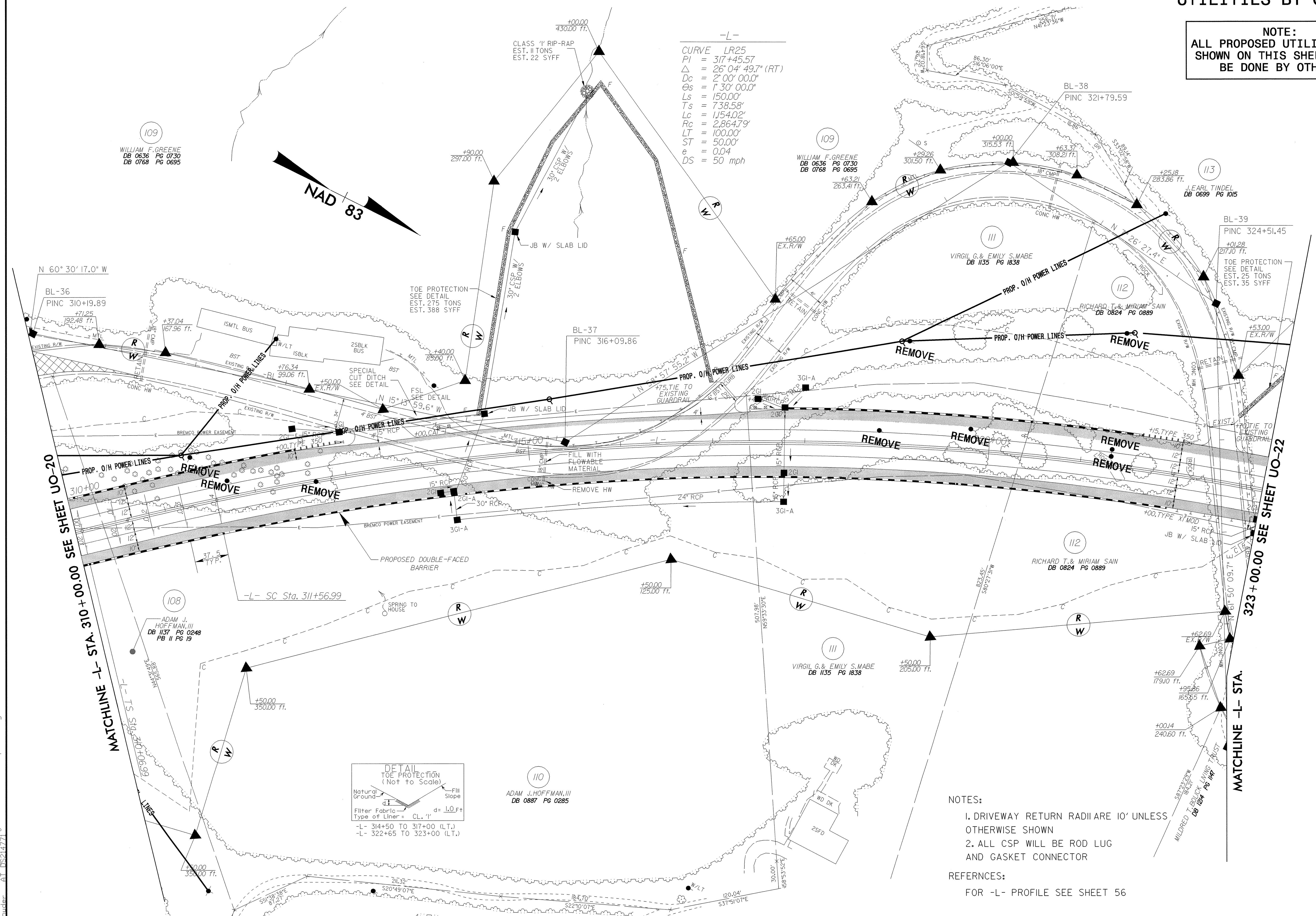


UTILITIES BY OTHERS

NOTE:
ALL PROPOSED UTILITY WORK SHOWN ON THIS SHEET WILL BE DONE BY OTHERS



-L-
CURVE LR25
PI = 317+45.57
Δ = 26° 04' 49.7" (RT)
Dc = 2' 00" 00.0"
Θs = 1' 30" 00.0"
Ls = 150.00'
Ts = 738.58'
Lc = 1454.02'
Rc = 2,864.79'
LT = 100.00'
ST = 50.00'
e = 0.04
DS = 50 mph

DETAIL
TOE PROTECTION
(Not to Scale)

Natural Ground
Fill Slope
Filter Fabric
Type of Liner = CL-1'
d = 1.0 Ft

-L- 314+50 TO 317+00 (LT.)
-L- 322+65 TO 323+00 (LT.)

NOTES:

1. DRIVEWAY RETURN RADII ARE 10' UNLESS OTHERWISE SHOWN
2. ALL CSP WILL BE ROD LUG AND GASKET CONNECTOR

REFERENCES:
FOR -L- PROFILE SEE SHEET 56

8/17/99
01-SEP-2004 15:25 E:\NH\1105es\1105es\UT-2237b_ut_UO_21psh_28.dgn
1105es\1105es\UT-2237b_ut_UO_21psh_28.dgn