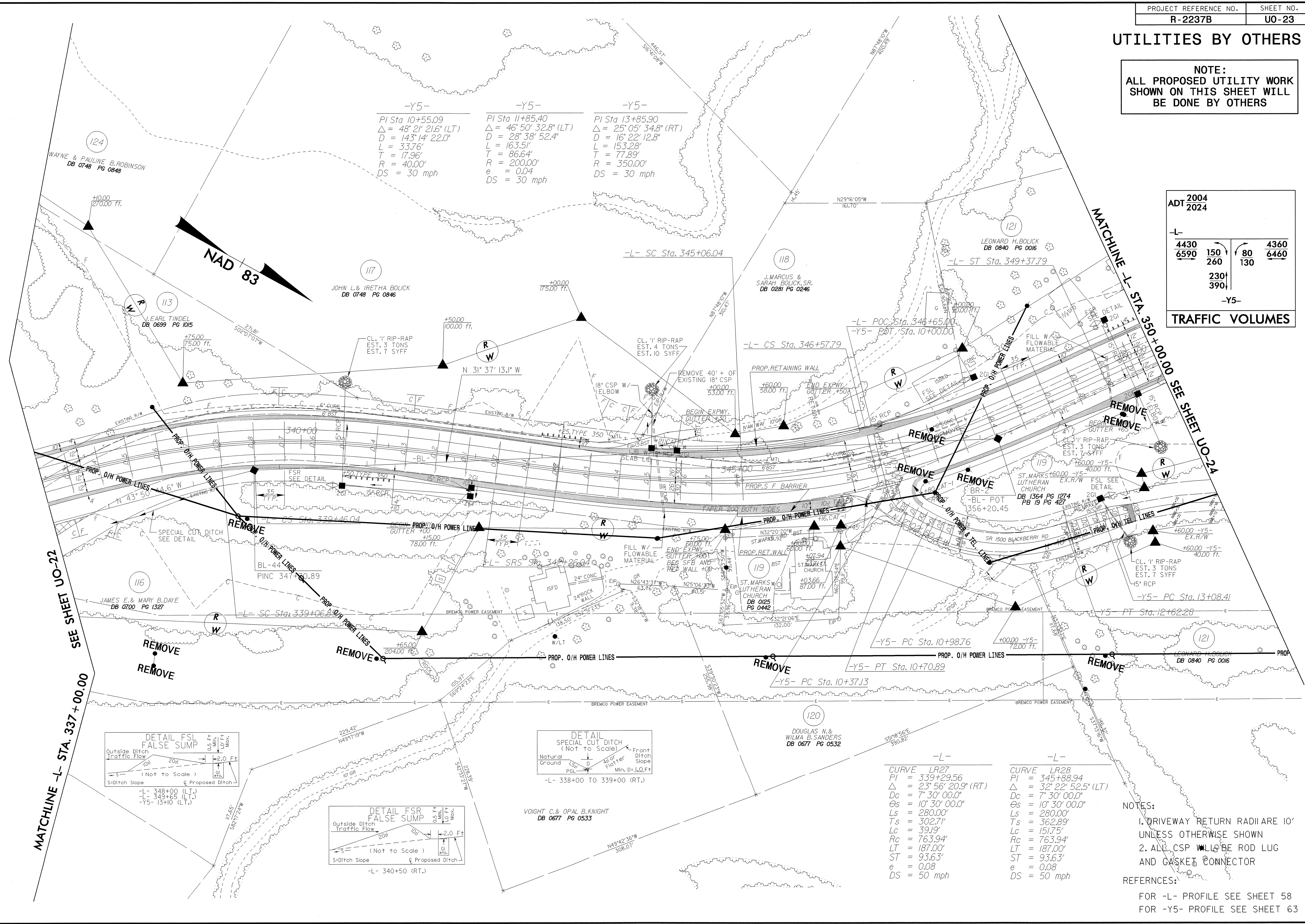


UTILITIES BY OTHERS

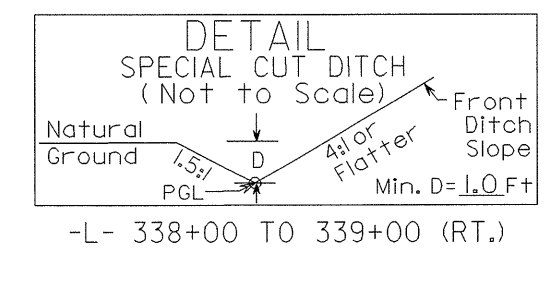
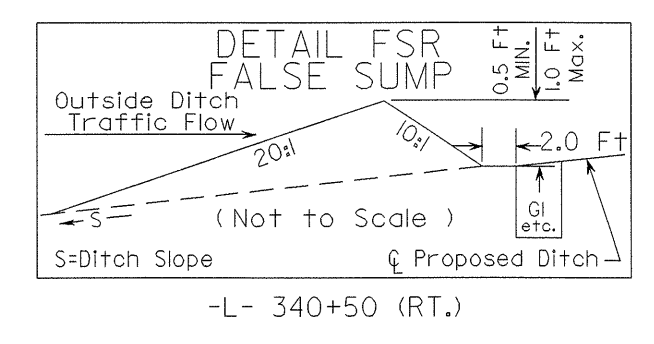
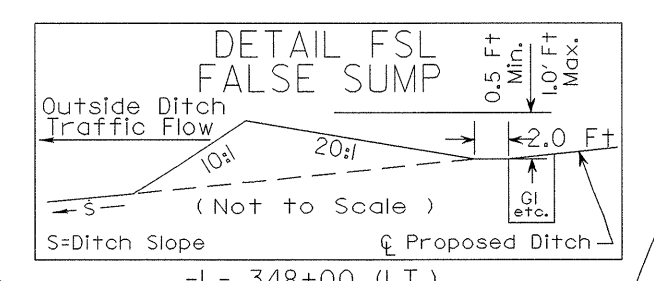
NOTE:
ALL PROPOSED UTILITY WORK
SHOWN ON THIS SHEET WILL
BE DONE BY OTHERS

ADT 2004		ADT 2024	
-L-	4430	4360	
	6590	150	80
		260	130
		230	390
			-Y5-
TRAFFIC VOLUMES			

8/17/99
01-SEP-2004 15:24 J:\Xpoc\JR-2237b_ut_uo_23psh_30.dgn
E:\N\11\0es\11\21\12771



-Y5-	-Y5-	-Y5-
PI Sta 10+55.09 Δ = 48° 21' 21.6" (LT) D = 143' 14" 22.0" L = 33.76' T = 17.96' R = 40.00' DS = 30 mph	PI Sta 11+85.40 Δ = 46° 50' 32.8" (LT) D = 28° 38' 52.4" L = 163.51' T = 86.64' R = 200.00' e = 0.04 DS = 30 mph	PI Sta 13+85.90 Δ = 25° 05' 34.8" (RT) D = 16° 22' 12.8" L = 153.28' T = 77.89' R = 350.00' DS = 30 mph



VOIGHT C. & OPAL B. KNIGHT
DB 0677 PG 0533

-L-	-L-
CURVE LR27 PI = 339+29.56 Δ = 23° 56' 20.9" (RT) Dc = 7° 30' 00.0" Os = 10° 30' 00.0" Ls = 280.00' Ts = 302.71' Lc = 39.19' Rc = 763.94' LT = 187.00' ST = 93.63' e = 0.08 DS = 50 mph	CURVE LR28 PI = 345+88.94 Δ = 32° 22' 52.5" (LT) Dc = 7° 30' 00.0" Os = 10° 30' 00.0" Ls = 280.00' Ts = 362.89' Lc = 151.75' Rc = 763.94' LT = 187.00' ST = 93.63' e = 0.08 DS = 50 mph

- NOTES:
- DRIVEWAY RETURN RADIARE 10' UNLESS OTHERWISE SHOWN
 - ALL CSP WALLS BE ROD LUG AND GASKET CONNECTOR
- REFERENCES:
FOR -L- PROFILE SEE SHEET 58
FOR -Y5- PROFILE SEE SHEET 63