

**NOTES**

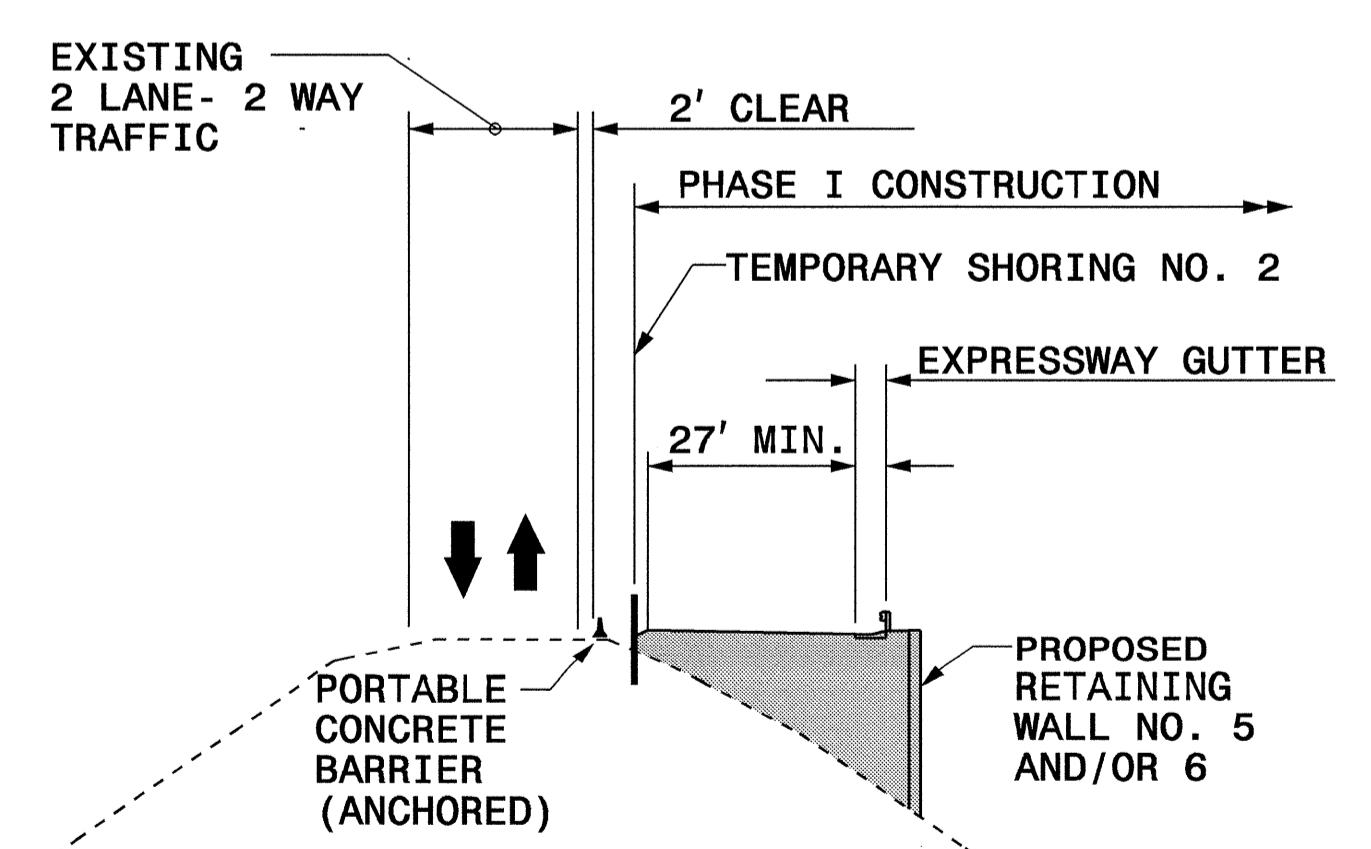
DO NOT USE STANDARD SHORING DESIGN FROM STA. 294+00 +/- -L- TO STA. 296+93 +/- -L-. CONTRACTOR IS RESPONSIBLE FOR SUBMITTING SHORING DESIGN.

FOR DESIGN OF TEMPORARY SHORING, USE THE FOLLOWING SOIL PARAMETERS FOR SOILS ABOVE THE ROCK:

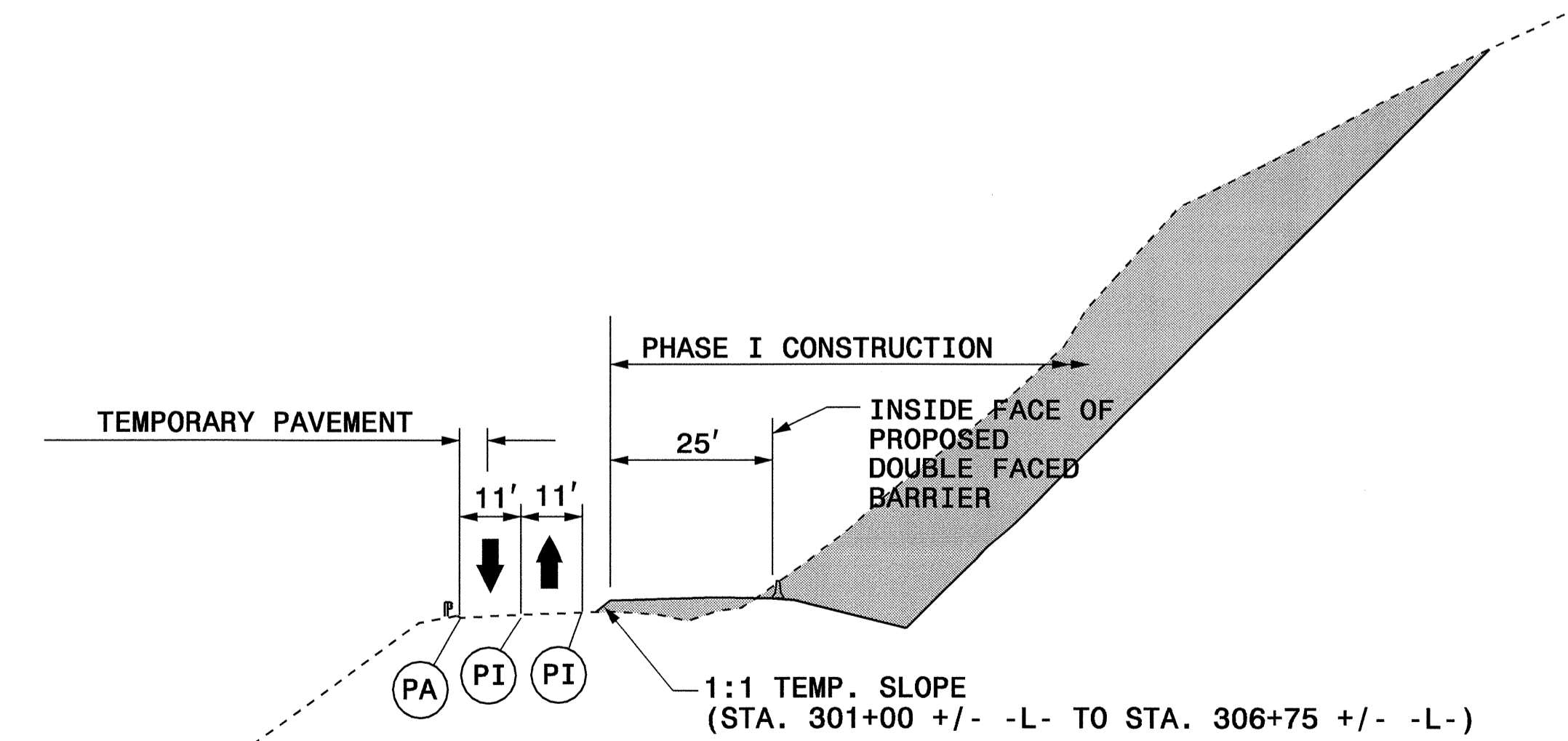
- UNIT WEIGHT OF SOIL ABOVE WATER TABLE,  $\gamma = 130$  pcf
- UNIT WEIGHT OF SOIL BELOW WATER TABLE,  $\gamma' = 70$  pcf
- FRICTION ANGLE,  $\phi = 34^\circ$
- COHESION,  $c = 0$  psf

ROADWAY EMBANKMENTS CONTAIN COBBLES AND BOULDERS AND A VARYING ROCK LINE. FOR ROCK LINE ELEVATIONS, SEE THE SUBSURFACE INVESTIGATION.

ESTIMATED QUANTITY OF SHORING LOCATED FROM STA. 294+00 +/- -L- TO STA. 296+93 +/- -L- IS 5800 SQ. FT.



**SECTION Q-Q'**  
(STA. 295+00 +/- -L-)



**SECTION R-R'**  
(STA. 305+00 +/- -L-)

SEAL		DATE: 11/4/04	<p align="center"><b>PHASE I DETAILS</b> STA. 289+00 TO STA. 310+00</p>	<table border="1"> <tr> <th colspan="2">REVISIONS</th> </tr> <tr> <td> </td> <td> </td> </tr> <tr> <td> </td> <td> </td> </tr> <tr> <td> </td> <td> </td> </tr> </table>	REVISIONS							
		REVISIONS										
SCALE: NONE	DATE: 10/03	DESIGN BY: DAP	REVIEWED BY: JWW									

03-NOV-2004 15:47  
 K:\TCPA\2237B\1\105\_PHASE I\_details.dgn  
 dapor\ker AT 11/12/04 12:26