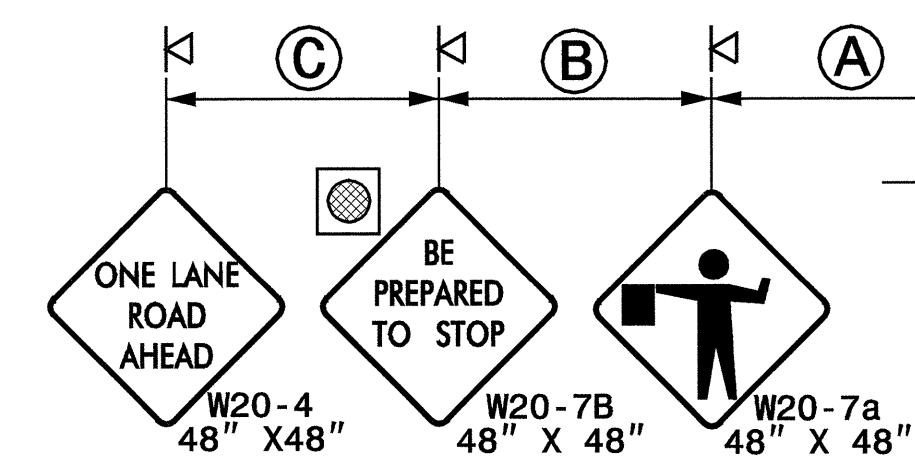
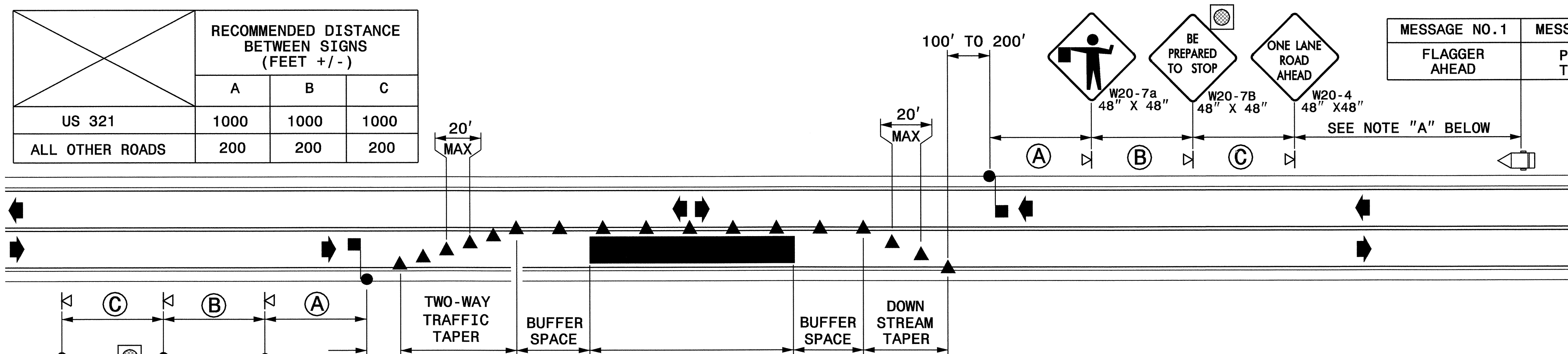


STATE OF NORTH CAROLINA  
 DEPT. OF TRANSPORTATION  
 DIVISION OF HIGHWAYS  
 RALEIGH, N.C.

**1-02**  
**TEMPORARY LANE CLOSURES**  
 2-LANE, 2-WAY ROADWAY-1 LANE CLOSED  
 SHEET 1 OF 7  
**1101.02**

	RECOMMENDED DISTANCE BETWEEN SIGNS (FEET +/-)		
	A	B	C
US 321	1000	1000	1000
ALL OTHER ROADS	200	200	200



NOTE "A":  
 CHANGEABLE MESSAGE SIGN REQUIRED ONLY ON US 321 ON THE UPHILL SIDE OF THE FLAGGING OPERATION OR AS DIRECTED BY THE ENGINEER.

**LEGEND**

	CHANGEABLE MESSAGE SIGN
	WARNING FLAGS
	CONE
	PORTABLE SIGN
	FLAGGER
	TYPE B WARNING LIGHT (FOR NIGHT USE)
	DIRECTION OF TRAFFIC FLOW

**GENERAL NOTES**

- INSTALL LANE CLOSURES WITH THE TRAFFIC FLOW, BEGINNING WITH DEVICES ON THE UPSTREAM SIDE OF TRAFFIC.
- REMOVE LANE CLOSURES AGAINST THE TRAFFIC FLOW, BEGINNING WITH DEVICES ON THE DOWNSTREAM SIDE OF TRAFFIC.
- PLACE CONES THRU THE WORK AREA AT THE MAXIMUM SPACING EQUAL IN FEET TO 2 TIMES THE POSTED SPEED LIMIT.
- EXTEND LANE CLOSURES AT THE BUFFER SPACE SUCH THAT STOPPING SIGHT DISTANCE IS PROVIDED TO THE FLAGGER. (REFER TO STD. DWG. 1101.11-SHEET 2).
- DO NOT STOP TRAFFIC IN ANY ONE DIRECTION FOR MORE THAN 5 MINUTES AT A TIME.
- USE PILOT CARS WHEN DIRECTED BY THE ENGINEER.
- USE FLAGGERS TO CONTROL TRAFFIC AT INTERSECTIONS AFFECTED BY THE LANE CLOSURE. ACCOMPANY FLAGGERS UTILIZED AT INTERSECTIONS WITH FLAGGER AHEAD SIGNS (W20-7a) PLACED APPROXIMATELY 250 FT. IN ADVANCE OF THE FLAGGER. WHERE INTERSECTIONS ARE SIGNALIZED, PLACE SIGNALS IN THE FLASH MODE.
- ADDITIONAL ADVANCE WARNING SIGNS MAY BE REQUIRED, AS DIRECTED, BY THE ENGINEER.

**1-02**  
 STATE OF NORTH CAROLINA  
 DEPT. OF TRANSPORTATION  
 DIVISION OF HIGHWAYS  
 RALEIGH, N.C.

**TEMPORARY LANE CLOSURES**  
 2-LANE, 2-WAY ROADWAY-1 LANE CLOSED  
 SHEET 1 OF 7  
**1101.02**

APPROVED: _____ DATE: _____	<b>REPLACEMENT DETAIL FOR RSD 1101.02, SHEET 1 OF 7</b>									
SCALE: NONE	DATE: MAY 2004	<table border="1"> <tr> <th colspan="2">REVISIONS</th> </tr> <tr> <td> </td> <td> </td> </tr> <tr> <td> </td> <td> </td> </tr> <tr> <td> </td> <td> </td> </tr> </table>	REVISIONS							
REVISIONS										
DWG. BY: DAP	DESIGN BY: DAP									
REVIEWED BY: JWW										
CADD FILE										

02-SEP-2004 09:25  
 R:\TCPA\2237b\TC\_Top\_Flagging.dwg  
 daporke AT TFC206426