

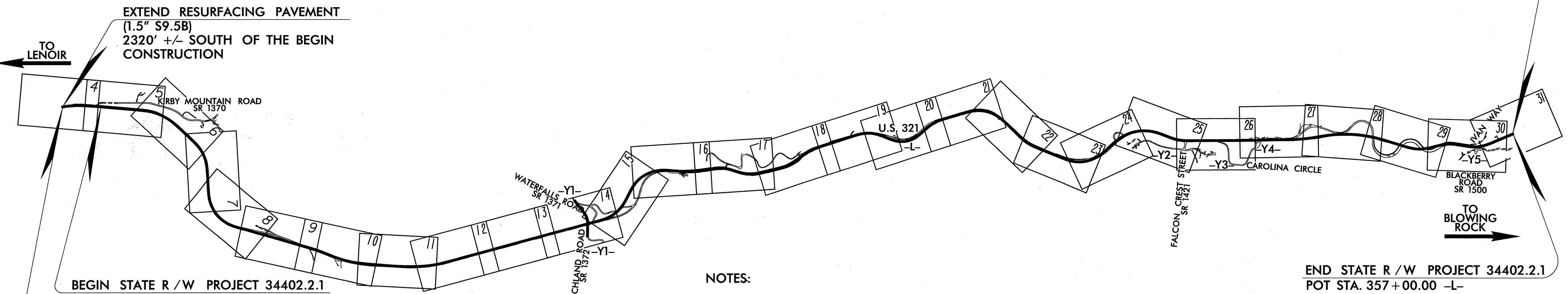
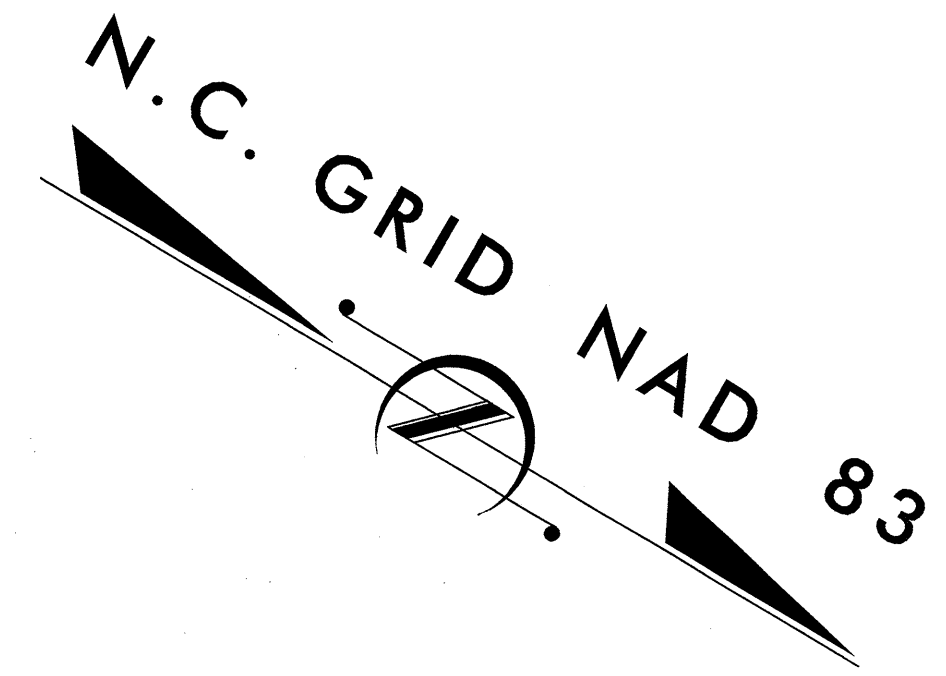
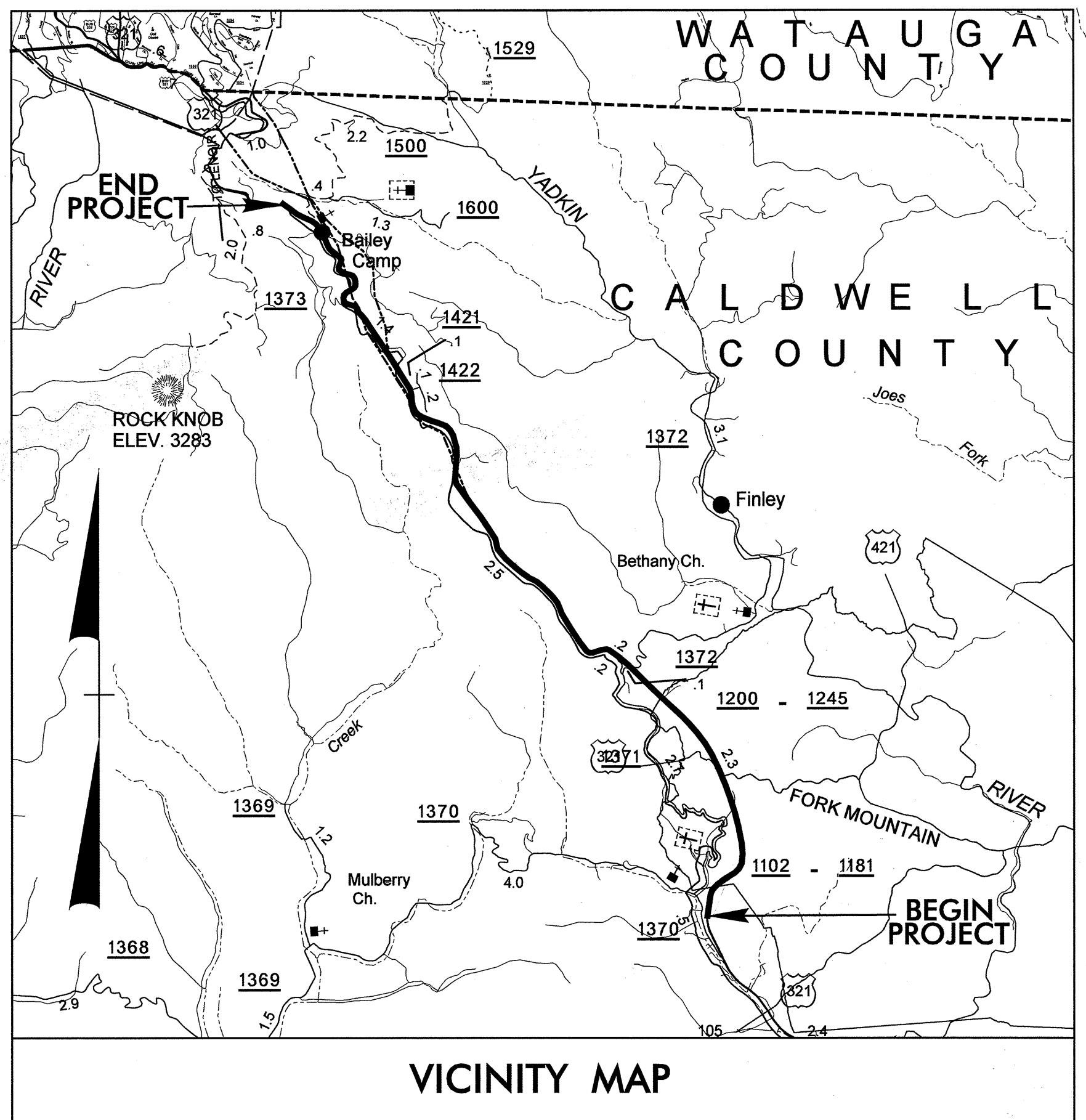
STATE	STATE PROJECT REFERENCE NO.	SHEET NO.	TOTAL SHEETS
N.C.	R-2237B	1	
STATE PROJ. NO.	F.A. PROJ. NO.	DESCRIPTION	
34402.1.1		PE	
34402.2.1	NHF-321 (11)	RW /UTL	
34402.3.6	NHS-321 (12)	CONST.	

STATE OF NORTH CAROLINA
DIVISION OF HIGHWAYS

CALDWELL COUNTY

LOCATION: U.S. 321 FROM S.R. 1370 (KIRBY MOUNTAIN ROAD)
TO S.R. 1500 (BLACKBERRY ROAD)

TYPE OF WORK: GRADING, DRAINAGE, PAVING, CULVERTS
AND RETAINING WALLS



END CONSTRUCTION
END TIP PROJECT R-2237B
POT STA. 356+50.00 -L-

END STATE R/W PROJECT 34402.2.1
POT STA. 357+00.00 -L-

EXTEND RESURFACING PAVEMENT
(1.5" S9.5B)
2320' +/- SOUTH OF THE BEGIN
CONSTRUCTION

TO LENOIR

BEGIN STATE R/W PROJECT 34402.2.1
POT STA. 21+75.00 -L-

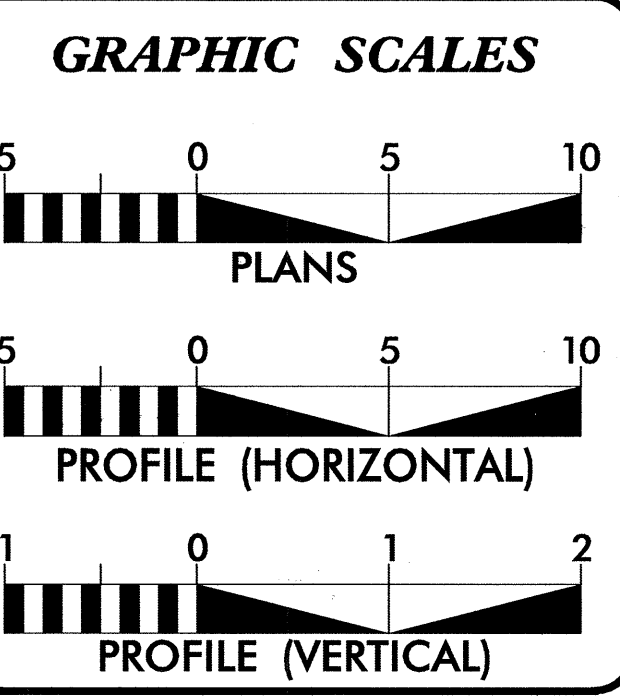
BEGIN CONSTRUCTION
BEGIN TIP PROJECT R-2237B
PC STA. 9+86.41 -L-

NOTES:
DESIGN EXCEPTIONS REQUIRED FOR THIS PROJECT,
SEE SHEETS: 17 & 20
SEE PROFILE SHEETS: 34-36, 38-42, 44-47,
52, & 57-58

NCDOT CONTACT : TERESA BRUTON, P.E.; PROJECT ENGINEER - DESIGN SERVICES

ROADWAY ENG:
HDR
HDR Engineering, Inc. of the Carolinas
3733 National Drive, Suite 207
Raleigh, NC 27612

HYDRAULICS ENG:
TRAN SITE CONSULTING
ENGINEERS, INCORPORATED
1300 Paddock Drive, Suite G-10
Raleigh, N.C. 27609



DESIGN DATA

ADT 2004 =	4700
ADT 2024 =	6900
DHV =	10 %
D =	60 %
T =	8 % *
V =	50 MPH
* TTST 3%	DUAL 5%

PROJECT LENGTH

LENGTH ROADWAY TIP PROJECT R-2237B	=	6.57 mi.
TOTAL LENGTH TIP PROJECT R-2237B	=	6.57 mi.

Prepared In the Office of:

HDR HDR Engineering, Inc. of the Carolinas
3733 National Drive, Suite 207
Raleigh, NC 27612

FOR THE NORTH CAROLINA DEPARTMENT OF TRANSPORTATION
2002 STANDARD SPECIFICATIONS

RIGHT OF WAY DATE: 12-31-02

LETTING DATE: 12-21-04

GREGORY A. KEMPF, P.E.
PROJECT ENGINEER

RONYELL A. THIGPEN, E.I.
PROJECT DESIGN ENGINEER

HYDRAULICS ENGINEER

PROFESSIONAL SEAL
14160

SIGNATURE: [Signature] P.E. 11/2/04

ROADWAY DESIGN ENGINEER

PROFESSIONAL SEAL
20677

SIGNATURE: [Signature] P.E. 11/2/04

**DIVISION OF HIGHWAYS
STATE OF NORTH CAROLINA**

STATE DESIGN ENGINEER: [Signature] P.E.

DEPARTMENT OF TRANSPORTATION
FEDERAL HIGHWAY ADMINISTRATION

APPROVED DIVISION ADMINISTRATOR: [Signature] DATE

CONTRACT: C201115 TIP PROJECT: R-2237B

09/10/04

11/03/2004 11:48:36 AM

See Sheet 1-A For Index of Sheets