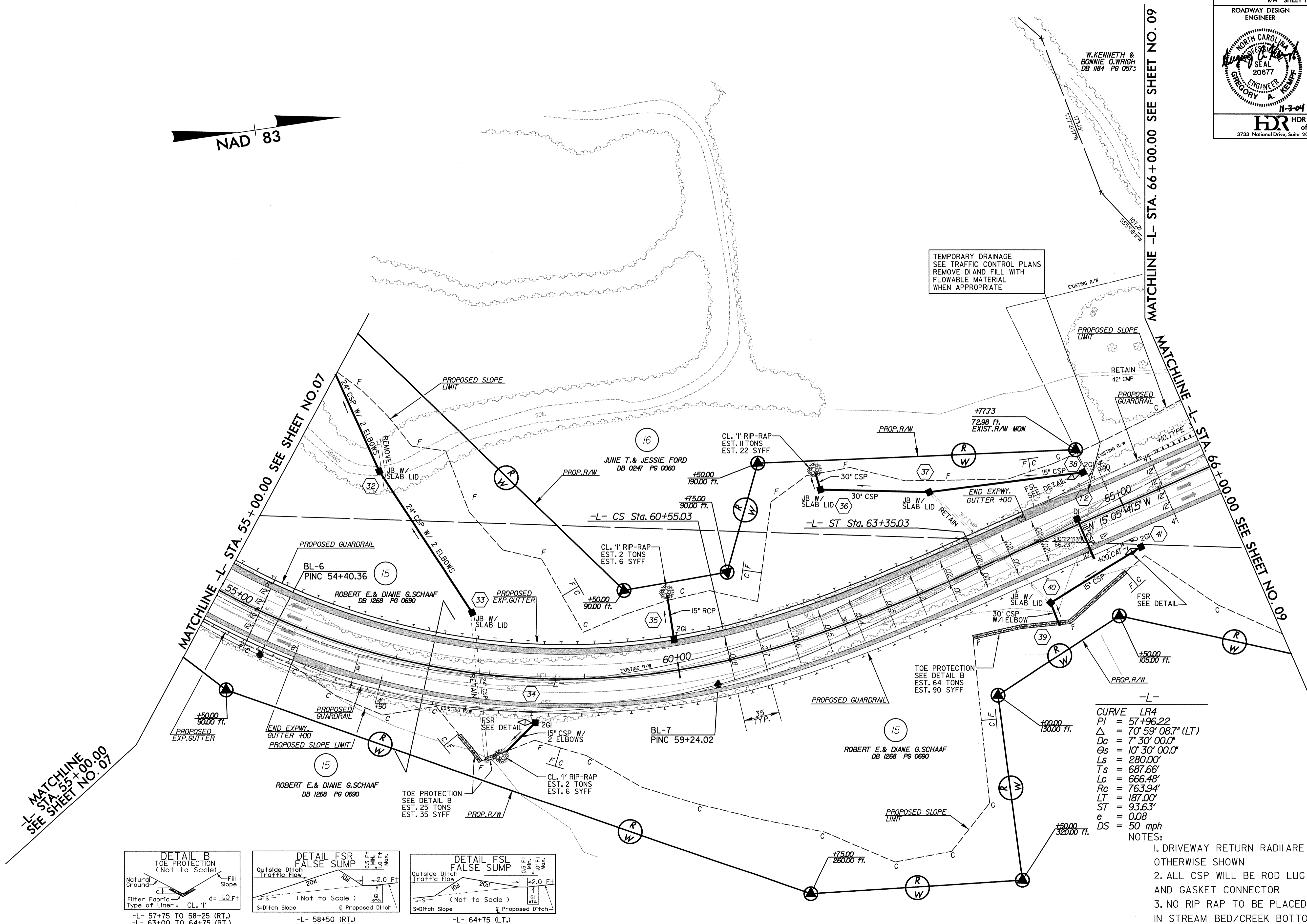
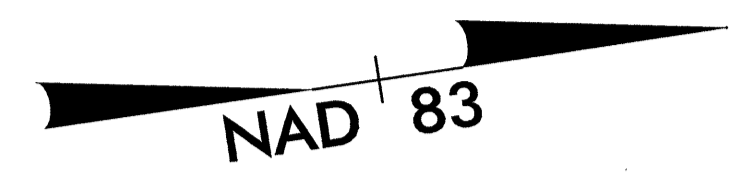


TRAN SITE CONSULTING
ENGINEERS, INCORPORATED
1300 Padlock Drive, Suite G-10
Raleigh, N.C. 27609
Excluding Temporary Drainage Structure Number 12
(See 64+50 to 64+55, 18" CSP and DI)

11-3-04

 ENGINEER
 NATHAN R. HENDERSON
 FOR HYDRAULIC DESIGN
 ASSOCIATED WITH TEMPORARY
 DRAINAGE STRUCTURE
 NUMBER 12
HDR HDR Engineering, Inc.
of the Carolinas
3733 National Drive, Suite 207
Raleigh, N.C. 27612



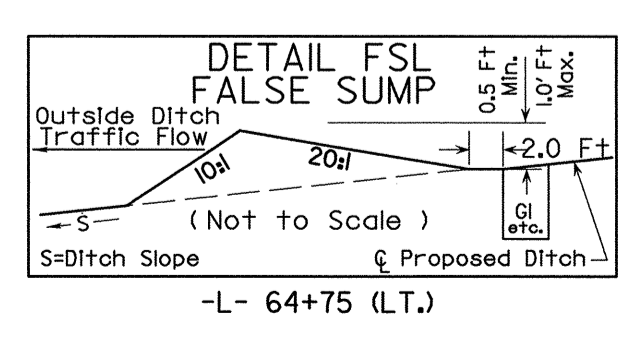
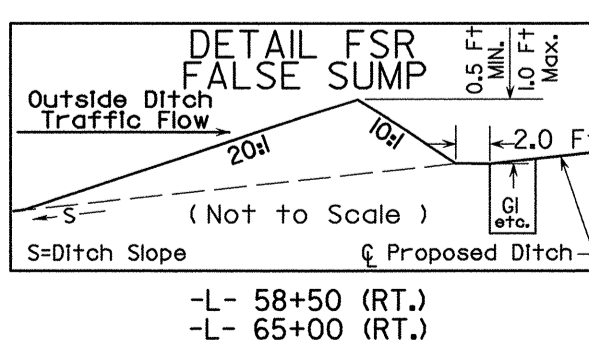
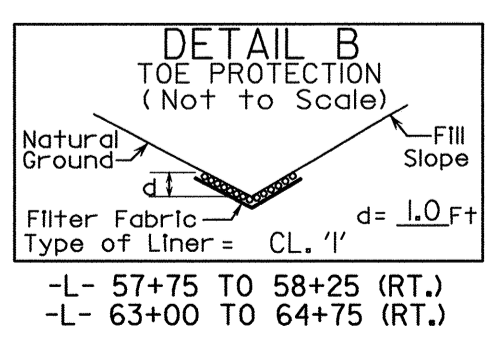
MATCHLINE -L- STA. 55+00.00 SEE SHEET NO. 07

MATCHLINE -L- STA. 66+00.00 SEE SHEET NO. 09

-L-
 CURVE LR4
 PI = 57+96.22
 Δ = 70° 59' 08.7" (LT)
 Dc = 7' 30' 00.0"
 Θ_s = 10° 30' 00.0"
 Ls = 280.00'
 Ts = 687.66'
 Lc = 666.48'
 Rc = 763.94'
 LT = 187.00'
 ST = 93.63'
 e = 0.08
 DS = 50 mph
 NOTES:

1. DRIVEWAY RETURN RADII ARE 10' UNLESS OTHERWISE SHOWN
2. ALL GSK WILL BE ROD LUG AND GASKET CONNECTOR
3. NO RIP RAP TO BE PLACED IN STREAM BED/CREEK BOTTOM

REFERENCES:
 FOR -L- PROFILE SEE SHEET 36



REVISIONS

8/17/05
 11/03/2004
 01:37:48 PM
 C:\projects\2237b\dwg\2237b.dwg