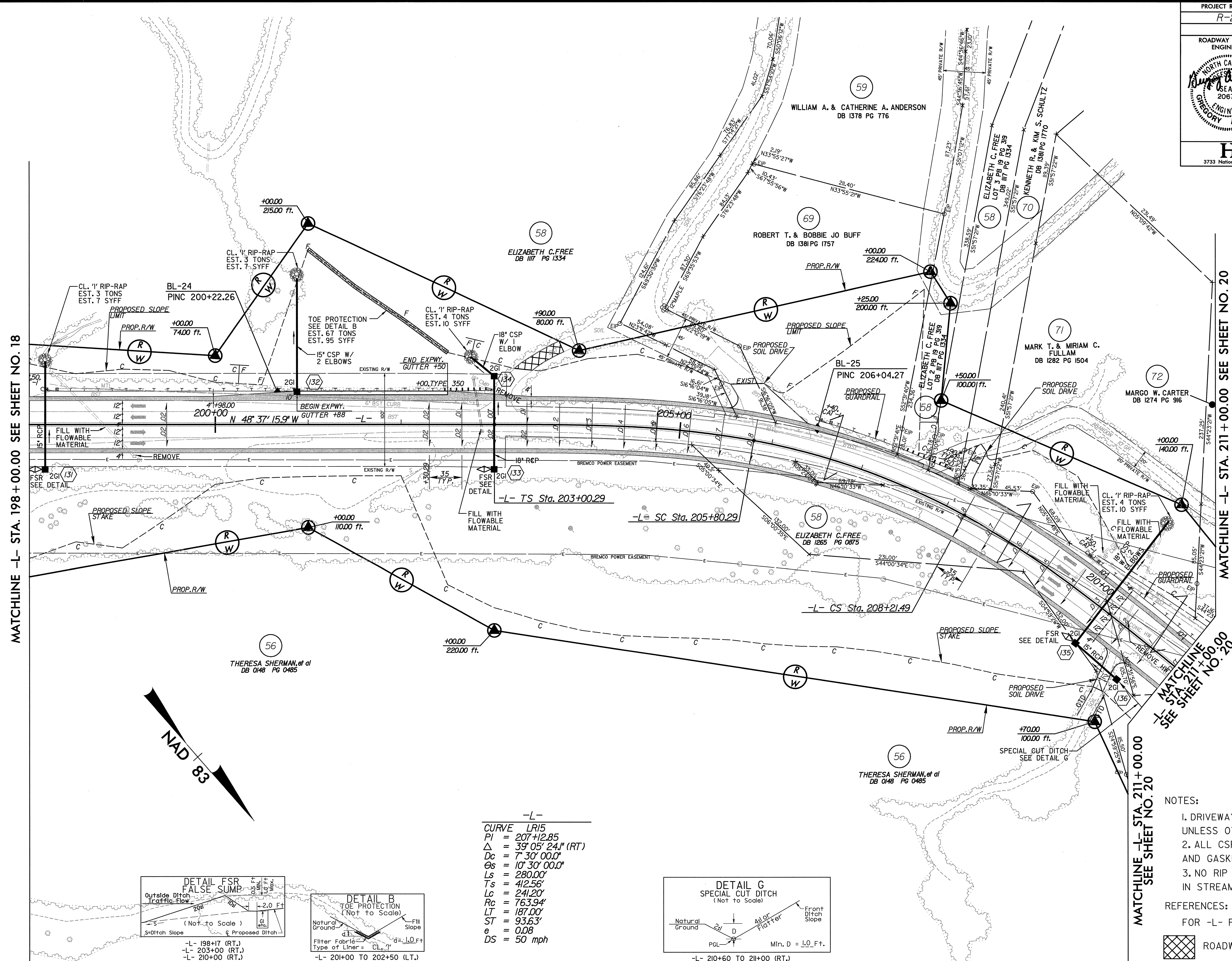


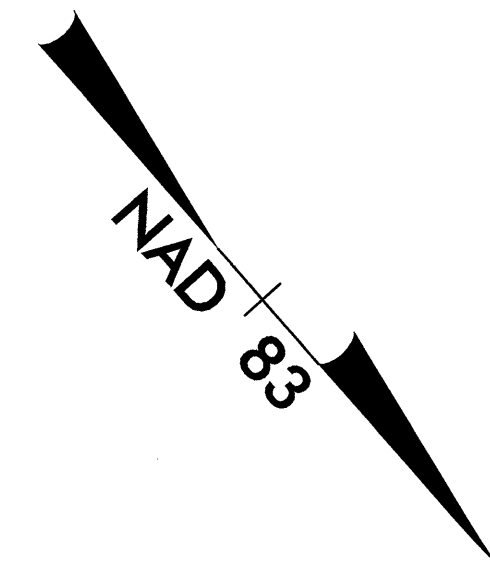
TRAN SITE CONSULTING ENGINEERS, INCORPORATED
1300 Padlock Drive, Suite G-10
Raleigh, N.C. 27609



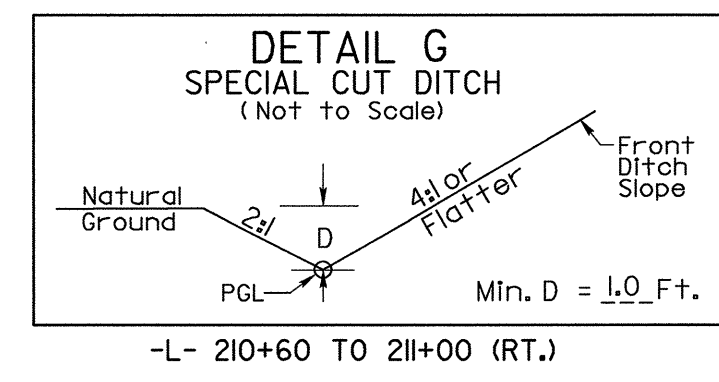
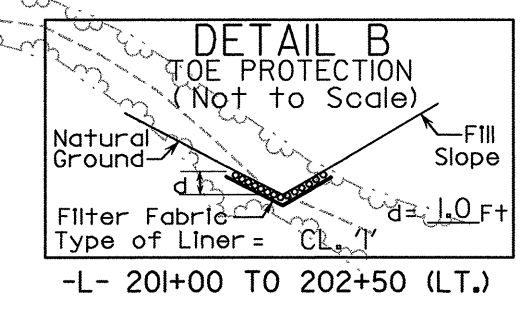
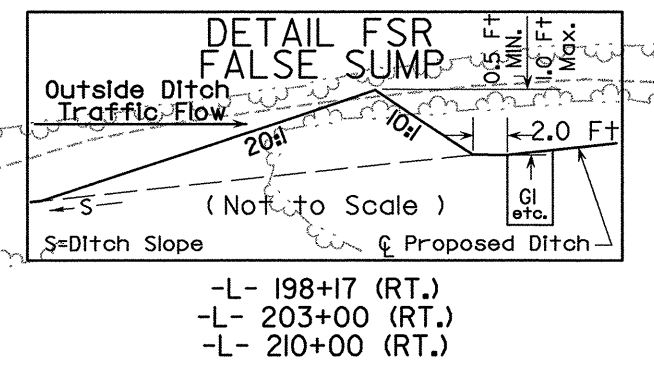
REVISIONS

MATCHLINE -L- STA. 198 + 00.00 SEE SHEET NO. 18

MATCHLINE -L- STA. 211 + 00.00 SEE SHEET NO. 20



-L-
CURVE LR15
PI = 207+12.85
Δ = 39° 05' 24.1" (RT)
Dc = 7' 30" 00.0"
Cs = 10' 30" 00.0"
Ls = 280.00'
Ts = 412.56'
Lc = 241.20'
Rc = 763.94'
LT = 187.00'
ST = 93.63'
e = 0.08
DS = 50 mph



- NOTES:
1. DRIVEWAY RETURN RADIARE 10' UNLESS OTHERWISE SHOWN
 2. ALL CSP WILL BE ROD LUG AND GASKET CONNECTOR
 3. NO RIP RAP TO BE PLACED IN STREAM BED/CREEK BOTTOM

REFERENCES:
FOR -L- PROFILE SEE SHEET 47

ROADWAY TO BE OBLITERATED

8/17/99
10/28/2004
9:26:24 AM
C:\projects\2237B\Drawings\2237B.dwg