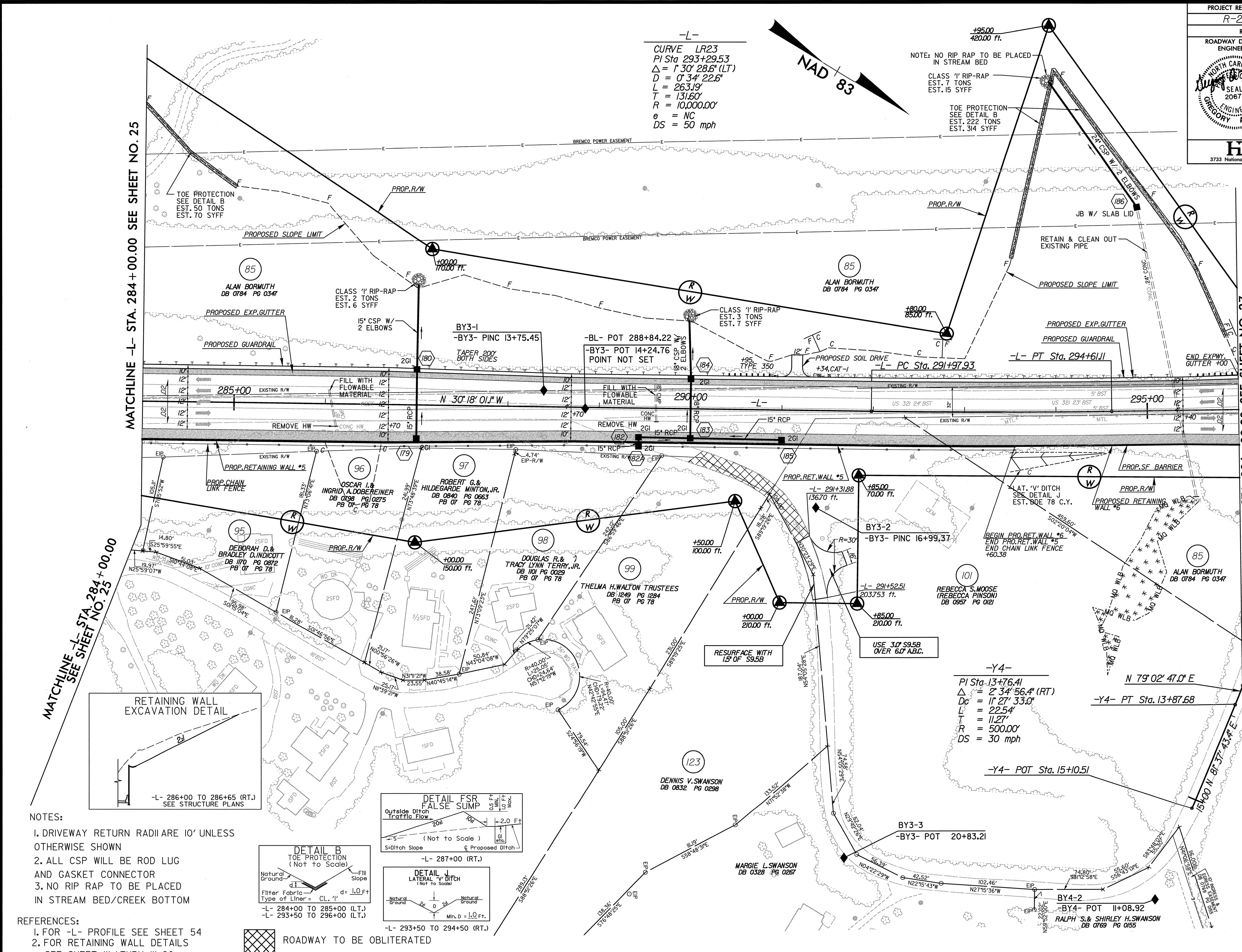
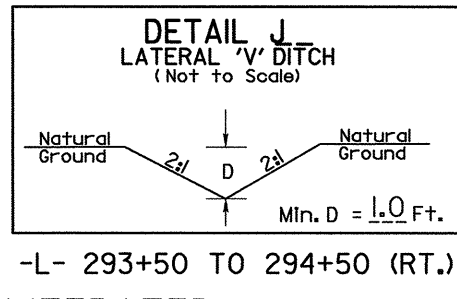
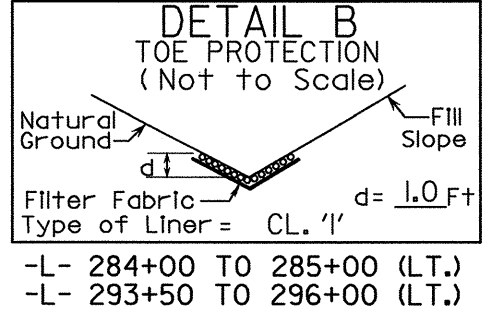
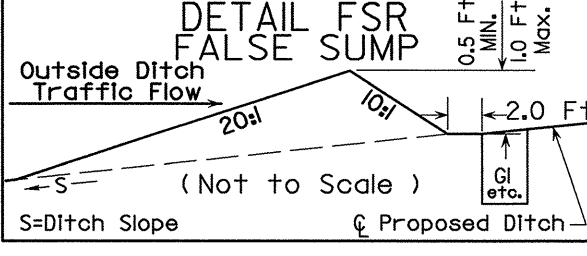
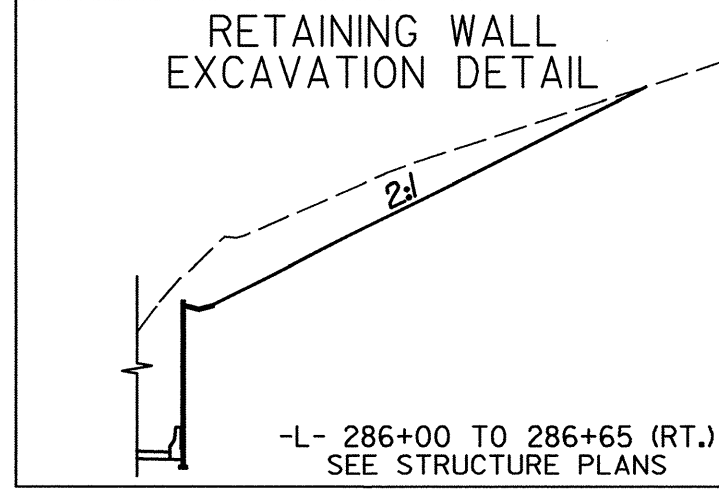


-L-
 CURVE LR23
 PI Sta 293+29.53
 $\Delta = 1^{\circ} 30' 28.6"$ (LT)
 $D = 0^{\circ} 34' 22.6"$
 $L = 263.19'$
 $T = 131.60'$
 $R = 10,000.00'$
 $e = NC$
 $DS = 50$ mph

NOTE: NO RIP RAP TO BE PLACED IN STREAM BED
 CLASS 1" RIP-RAP EST. 7 TONS EST. 15 SYFF
 TOE PROTECTION SEE DETAIL B EST. 222 TONS EST. 314 SYFF



MATCHLINE -L- STA. 284+00.00 SEE SHEET NO. 25
 MATCHLINE -L- STA. 296+00.00 SEE SHEET NO. 27



- NOTES:
1. DRIVEWAY RETURN RADII ARE 10' UNLESS OTHERWISE SHOWN
 2. ALL CSP WILL BE ROD LUG AND GASKET CONNECTOR
 3. NO RIP RAP TO BE PLACED IN STREAM BED/CREEK BOTTOM

- REFERENCES:
1. FOR -L- PROFILE SEE SHEET 54
 2. FOR RETAINING WALL DETAILS SEE SHEET W-1 THRU W-20

ROADWAY TO BE OBLITERATED

REVISIONS

8/17/99
 11/16/2004
 12:10:53 PM
 12:10:53 PM