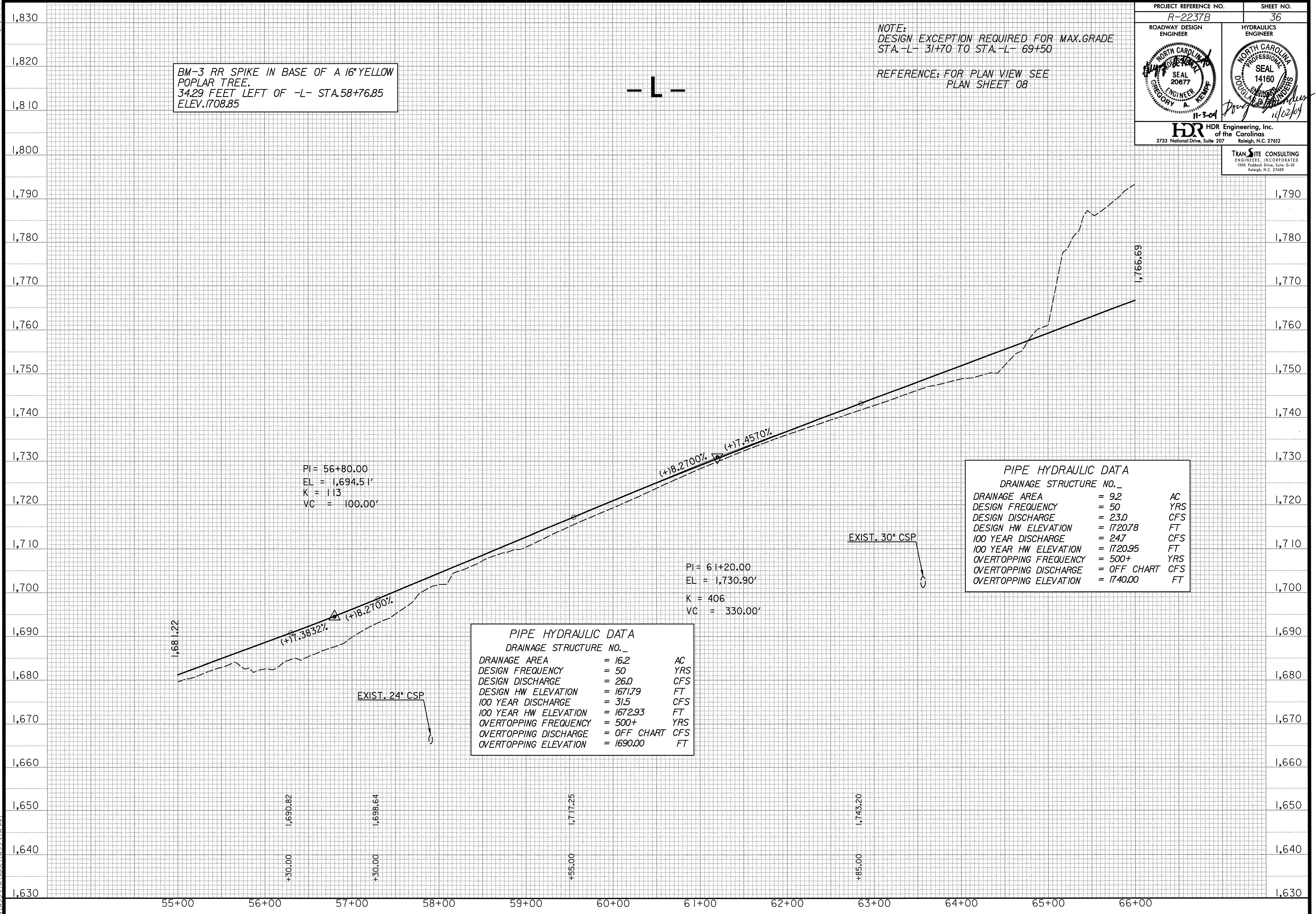


NOTE:  
 DESIGN EXCEPTION REQUIRED FOR MAX.GRADE  
 STA. -L- 31+70 TO STA. -L- 69+50

REFERENCE: FOR PLAN VIEW SEE  
 PLAN SHEET 08

BM-3 RR SPIKE IN BASE OF A 16' YELLOW  
 POPLAR TREE.  
 34.29 FEET LEFT OF -L- STA.58+76.85  
 ELEV.1708.85

- L -



PI = 56+80.00  
 EL = 1,694.51'  
 K = 113  
 VC = 100.00'

PI = 61+20.00  
 EL = 1,730.90'  
 K = 406  
 VC = 330.00'

PIPE HYDRAULIC DATA  
 DRAINAGE STRUCTURE NO. \_

DRAINAGE AREA	= 9.2	AC
DESIGN FREQUENCY	= 50	YRS
DESIGN DISCHARGE	= 23.0	CFS
DESIGN HW ELEVATION	= 1720.78	FT
100 YEAR DISCHARGE	= 24.7	CFS
100 YEAR HW ELEVATION	= 1720.95	FT
OVERTOPPING FREQUENCY	= 500+	YRS
OVERTOPPING DISCHARGE	= OFF CHART	CFS
OVERTOPPING ELEVATION	= 1740.00	FT

PIPE HYDRAULIC DATA  
 DRAINAGE STRUCTURE NO. \_

DRAINAGE AREA	= 16.2	AC
DESIGN FREQUENCY	= 50	YRS
DESIGN DISCHARGE	= 26.0	CFS
DESIGN HW ELEVATION	= 1671.79	FT
100 YEAR DISCHARGE	= 31.5	CFS
100 YEAR HW ELEVATION	= 1672.93	FT
OVERTOPPING FREQUENCY	= 500+	YRS
OVERTOPPING DISCHARGE	= OFF CHART	CFS
OVERTOPPING ELEVATION	= 1690.00	FT

5/14/05  
 11/02/2004  
 02:46:27 PM  
 5518252378.DWG  
 IN:R2237B.PE1