

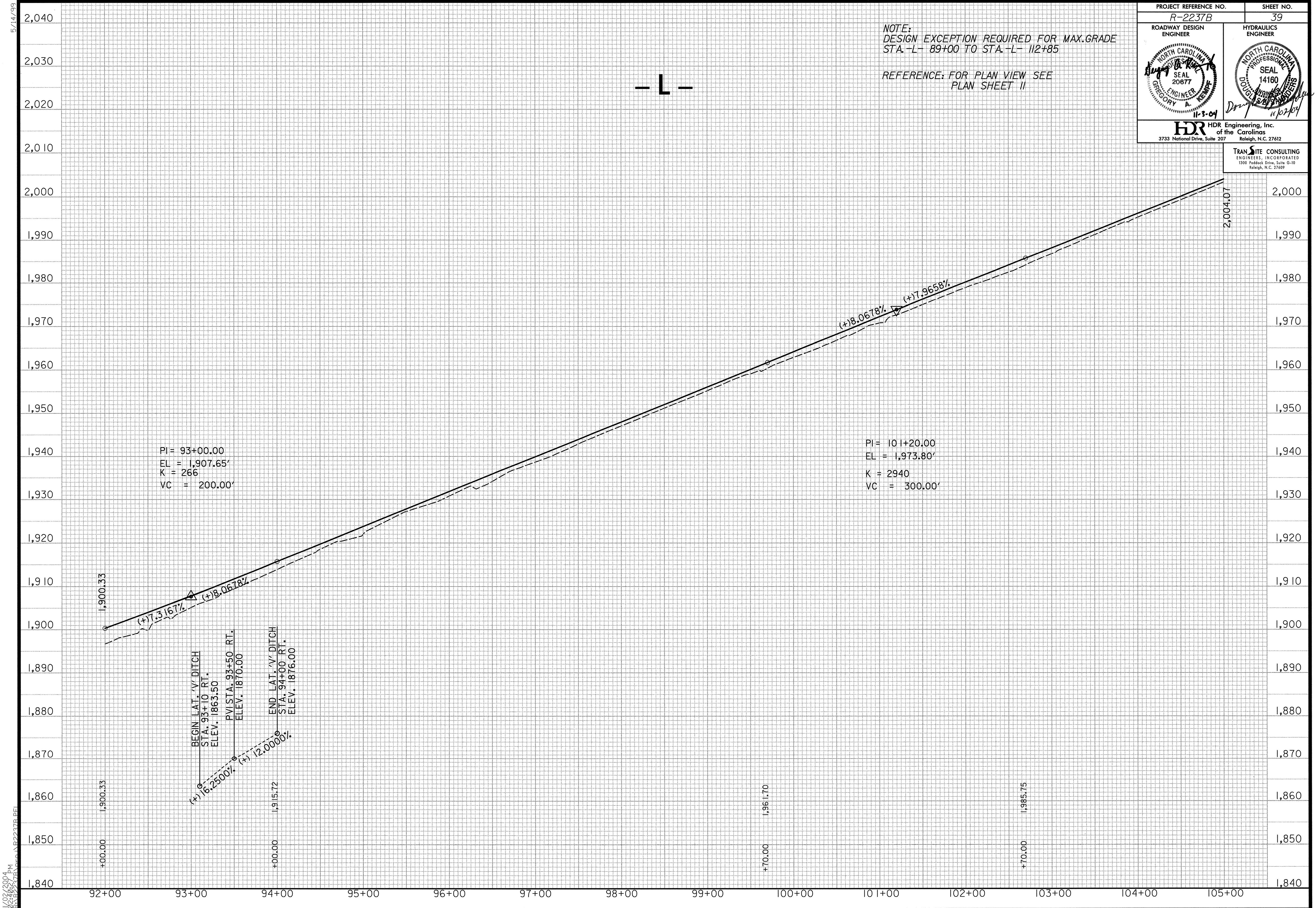
HDR Engineering, Inc.
of the Carolinas
3733 National Drive, Suite 207 Raleigh, N.C. 27612

TRANSITE CONSULTING
ENGINEERS, INCORPORATED
1300 Piedmont Drive, Suite G-10 Raleigh, N.C. 27609

NOTE:
DESIGN EXCEPTION REQUIRED FOR MAX.GRADE
STA.-L- 89+00 TO STA.-L- 112+85

REFERENCE: FOR PLAN VIEW SEE
PLAN SHEET II

- L -



PI = 93+00.00
EL = 1,907.65'
K = 266
VC = 200.00'

PI = 101+20.00
EL = 1,973.80'
K = 2940
VC = 300.00'

BEGIN LAT. 'V' DITCH
STA. 93+10 RT.
ELEV. 1863.50
PVI STA. 93+50 RT.
ELEV. 1870.00
END LAT. 'V' DITCH
STA. 94+00 RT.
ELEV. 1876.00
(+)16.2500%
(+)12.0000%

5/14/09 10:08:00 AM 6/24/09 10:08:00 AM