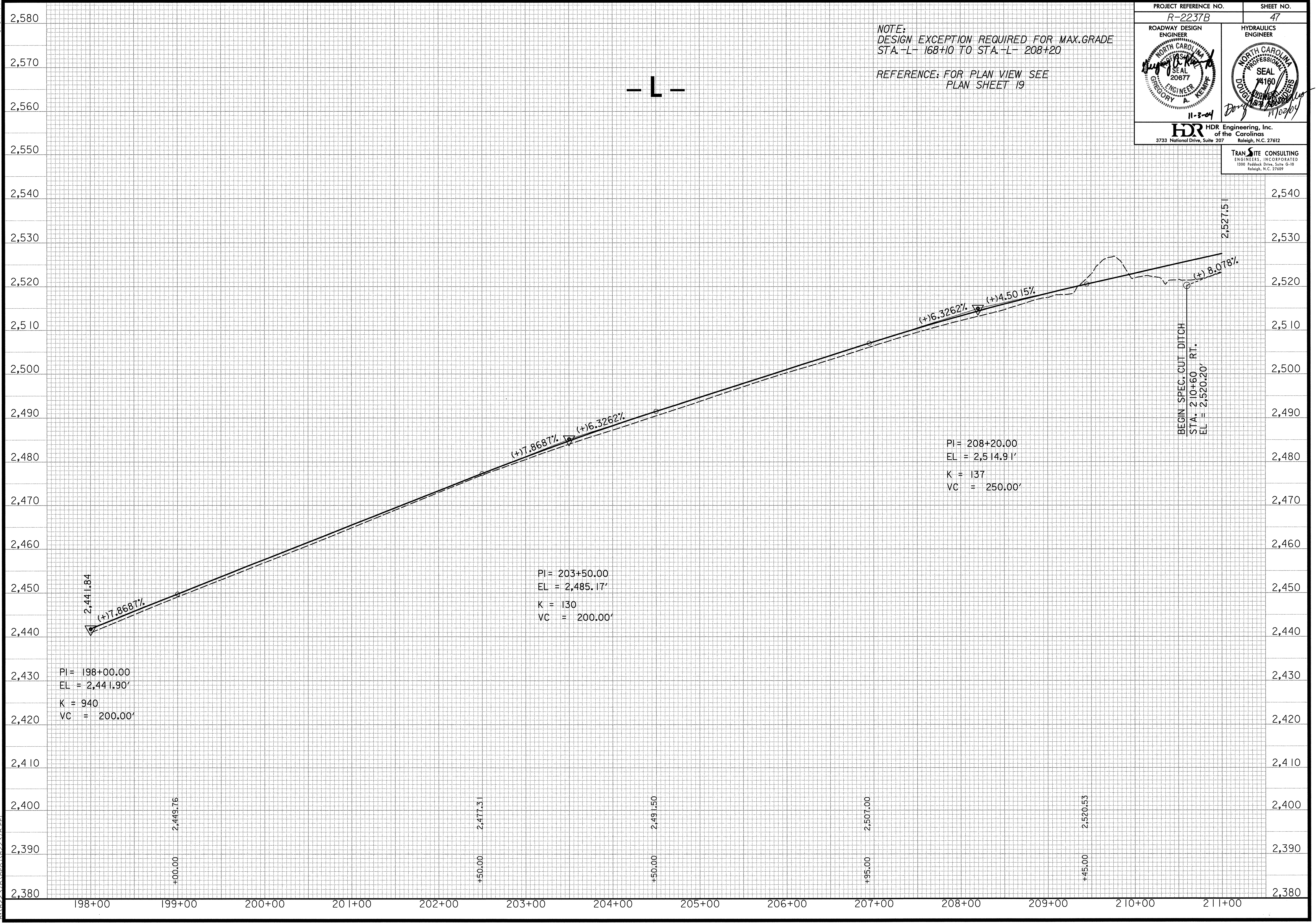


PROJECT REFERENCE NO. R-2237B	SHEET NO. 47
ROADWAY DESIGN ENGINEER GREGORY A. KEMPKER 11-3-04	HYDRAULICS ENGINEER D. J. ... 11/02/04
HDR Engineering, Inc. of the Carolinas 3733 National Drive, Suite 207 Raleigh, N.C. 27612	

NOTE:
DESIGN EXCEPTION REQUIRED FOR MAX. GRADE
STA. -L- 168+10 TO STA. -L- 208+20

REFERENCE: FOR PLAN VIEW SEE
PLAN SHEET 19

- L -



5/14/99
 11/02/2004 02:46:26 PM
 R:\B2237B\Drawings\B2237B.PE1