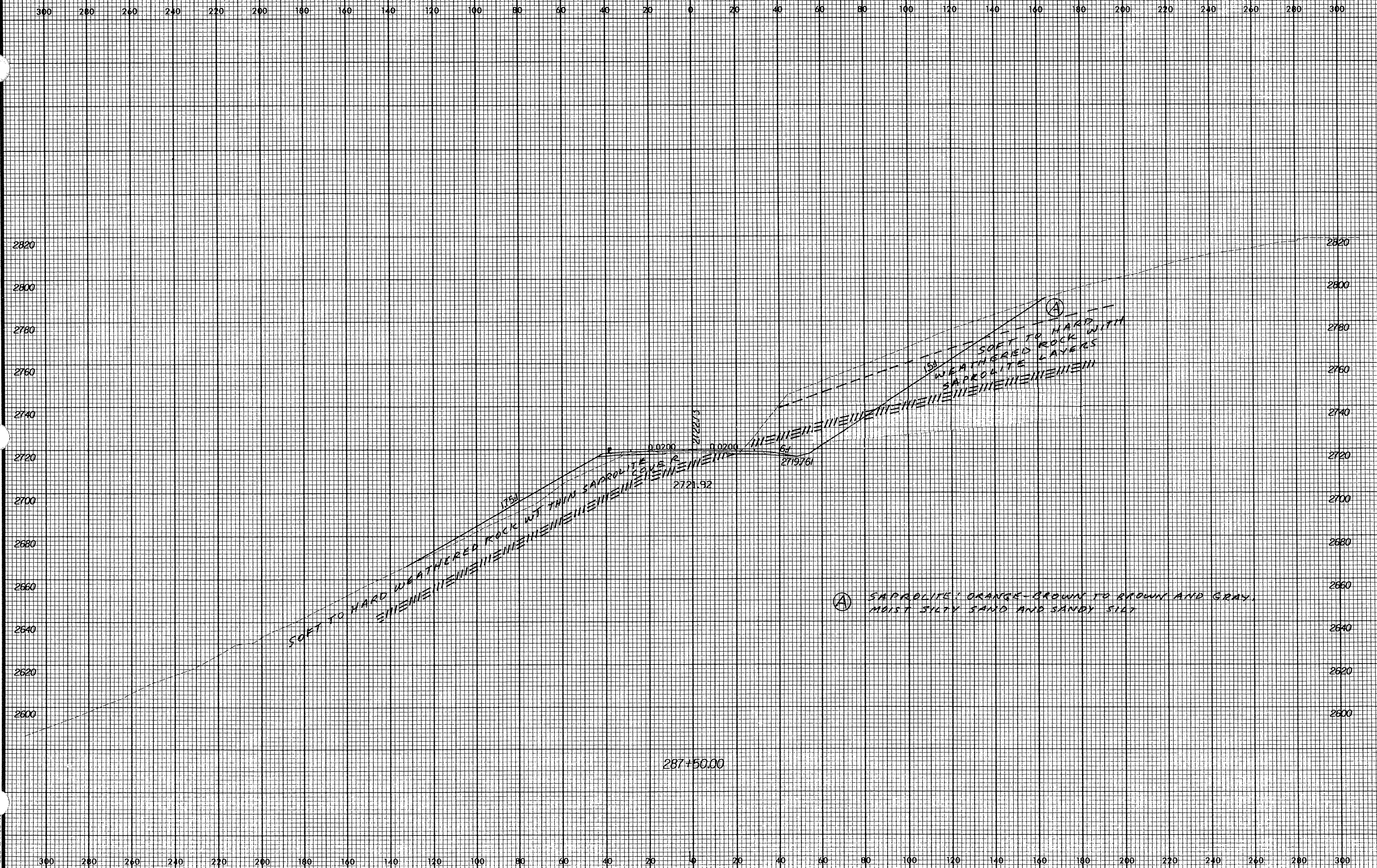


Rev. 12/12/08



SOFT TO HARD WEATHERED ROCK WITH THIN SAPROLITE COVER

SOFT TO HARD WEATHERED ROCK WITH WEATHERED LAYERS SAPROLITE

SOFT TO HARD WEATHERED ROCK WITH THIN SAPROLITE COVER

SOFT TO HARD WEATHERED ROCK WITH WEATHERED LAYERS SAPROLITE

(A) SAPROLITE: ORANGE-BROWN TO BROWN AND GRAY, MOIST SILTY SAND AND SANDY SILT

287+50.00

10 AUG 2001 10:34:25 1:2237b.xsc