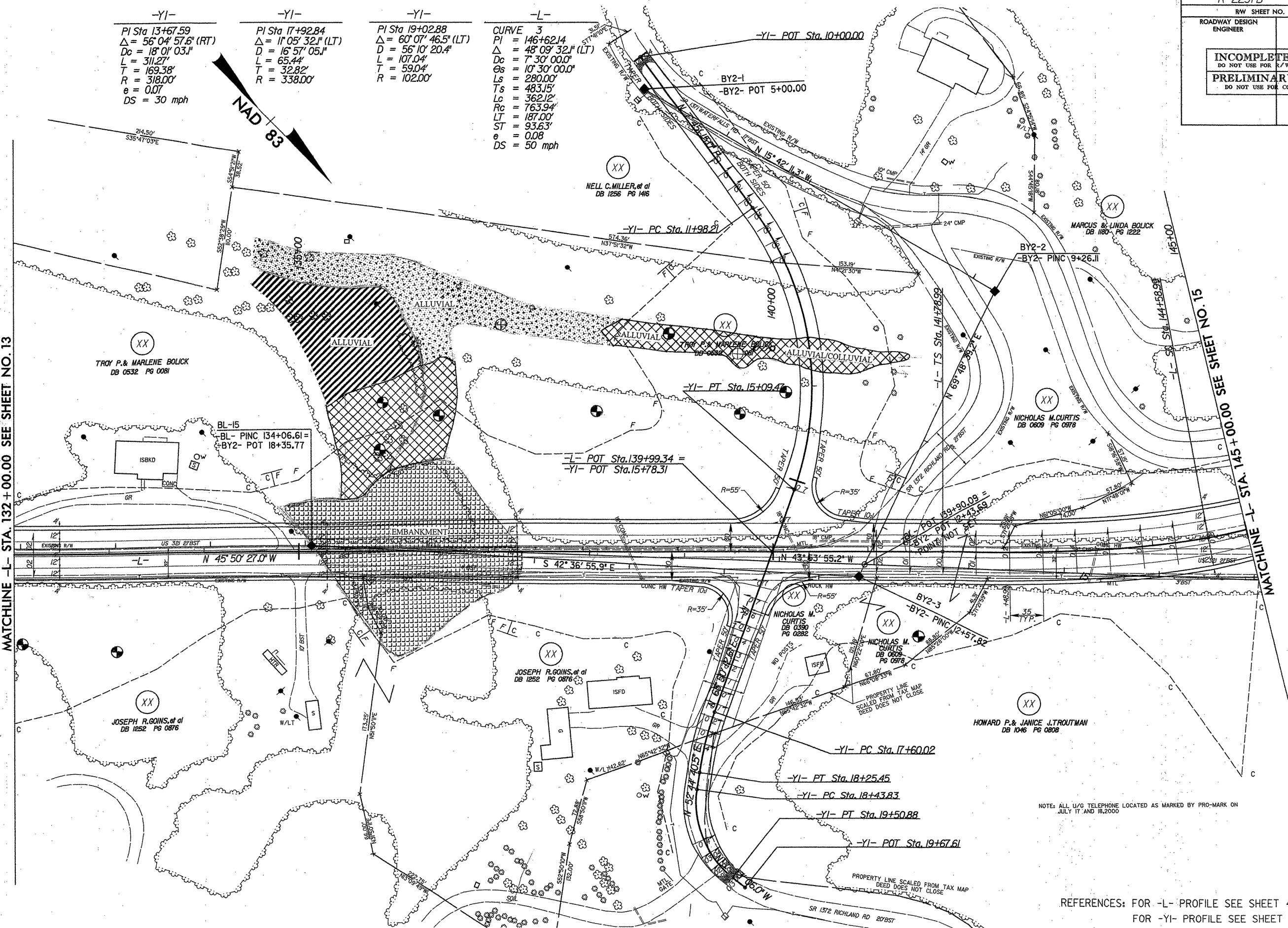
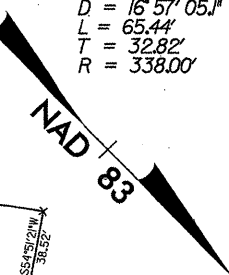


-YI-	-YI-	-YI-	-L-
PI Sta 13+67.59	PI Sta 17+92.84	PI Sta 19+02.88	CURVE 3
$\Delta = 56^{\circ} 04' 57.6"$ (RT)	$\Delta = 11^{\circ} 05' 32.1"$ (LT)	$\Delta = 60^{\circ} 07' 46.5"$ (LT)	PI = 146+62.14
$D_c = 18^{\circ} 01' 03.1"$	$D = 16^{\circ} 57' 05.1"$	$D = 56^{\circ} 10' 20.4"$	$\Delta = 48^{\circ} 09' 32.1"$ (LT)
$L = 311.27'$	$L = 65.44'$	$L = 107.04'$	$D_c = 7^{\circ} 30' 00.0"$
$T = 169.38'$	$T = 32.82'$	$T = 59.04'$	$\Theta_s = 10^{\circ} 30' 00.0"$
$R = 318.00'$	$R = 338.00'$	$R = 102.00'$	$L_s = 280.00'$
$e = 0.07$			$T_s = 483.15'$
$DS = 30$ mph			$L_c = 362.12'$
			$R_c = 763.94'$
			$LT = 187.00'$
			$ST = 93.63'$
			$e = 0.08$
			$DS = 50$ mph



NOTE: ALL U/G TELEPHONE LOCATED AS MARKED BY PRO-MARK ON JULY 17 AND 18, 2000

REFERENCES: FOR -L- PROFILE SEE SHEET 42  
 FOR -YI- PROFILE SEE SHEET 60

REVISIONS

8/17/99

08/19/2004