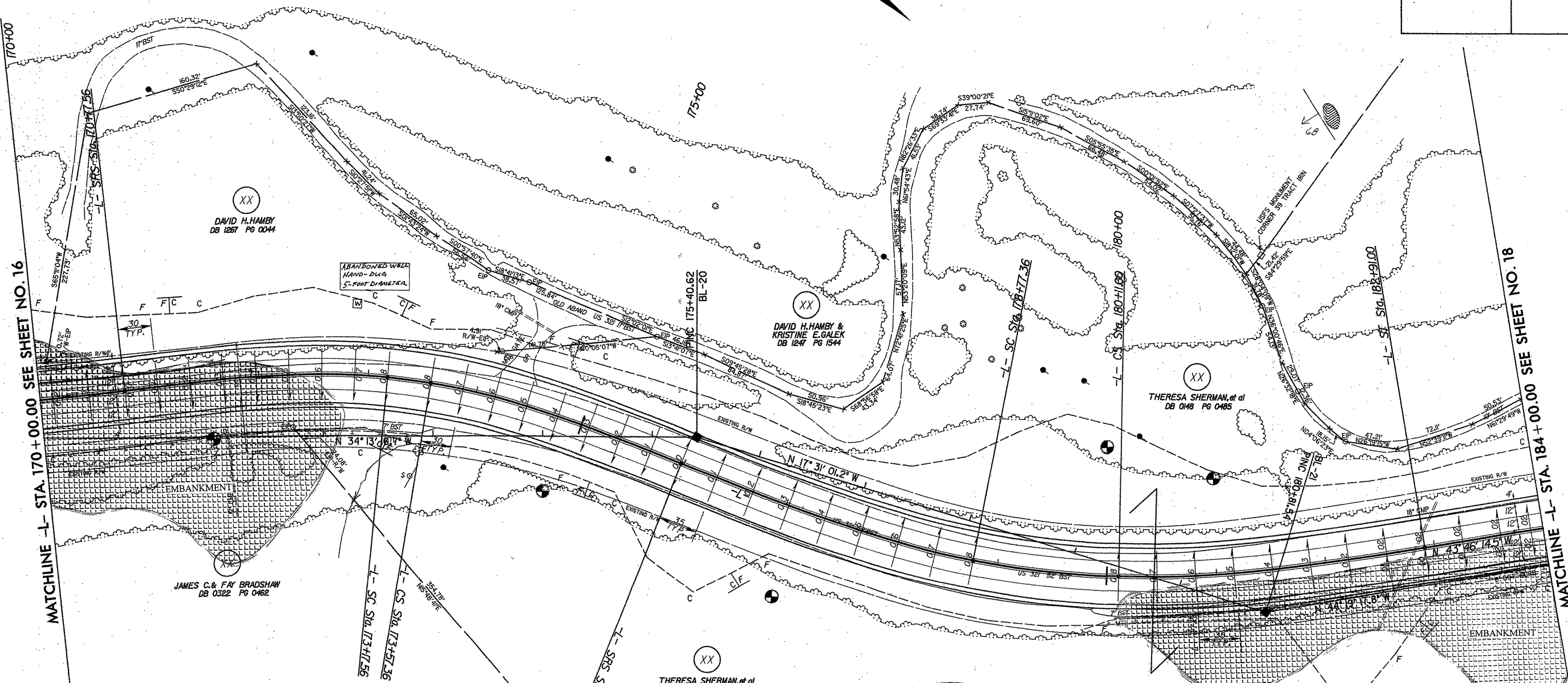
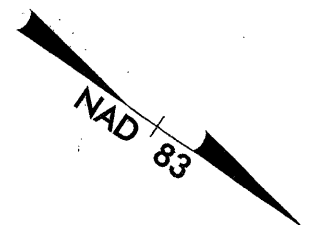


8/17/99

PROJECT REFERENCE NO. R-2237B	SHEET NO. 39
RW SHEET NO.	
ROADWAY DESIGN ENGINEER	HYDRAULICS ENGINEER
<b>INCOMPLETE PLANS</b> DO NOT USE FOR R/W ACQUISITION <b>PRELIMINARY PLANS</b> DO NOT USE FOR CONSTRUCTION	



CURVE 5	CURVE 6	CURVE 7
PI = 168+19.16	PI = 173+41.18	PI = 179+50.42
$\Delta = 11^{\circ} 31' 18.0''$ (LT)	$\Delta = 27^{\circ} 58' 46.0''$ (RT)	$\Delta = 31^{\circ} 01' 24.4''$ (LT)
Dc = 4' 00" 00.0"	Dc = 10' 00" 00.0"	Dc = 7' 30" 00.0"
Os = 4' 36" 00.0"	Os = 12' 00" 00.0"	Os = 10' 30" 00.0"
Ls = 230.00'	Ls = 240.00'	Ls = 280.00'
Ts = 259.64'	Ts = 263.61'	Ts = 353.06'
Lc = 58.04'	Lc = 39.79'	Lc = 133.65'
Rc = 1,432.39'	Rc = 572.96'	Rc = 763.94'
LT = 153.39'	LT = 160.37'	LT = 187.00'
ST = 76.71'	ST = 80.34'	ST = 93.63'
e = 0.07	e = 0.08	e = 0.08
DS = 50 mph	DS = 45 mph	DS = 50 mph

REFERENCES: FOR -L- PROFILE SEE SHEET 45

08:10:28 PM  
C:\Users\james\Documents\17.mxd