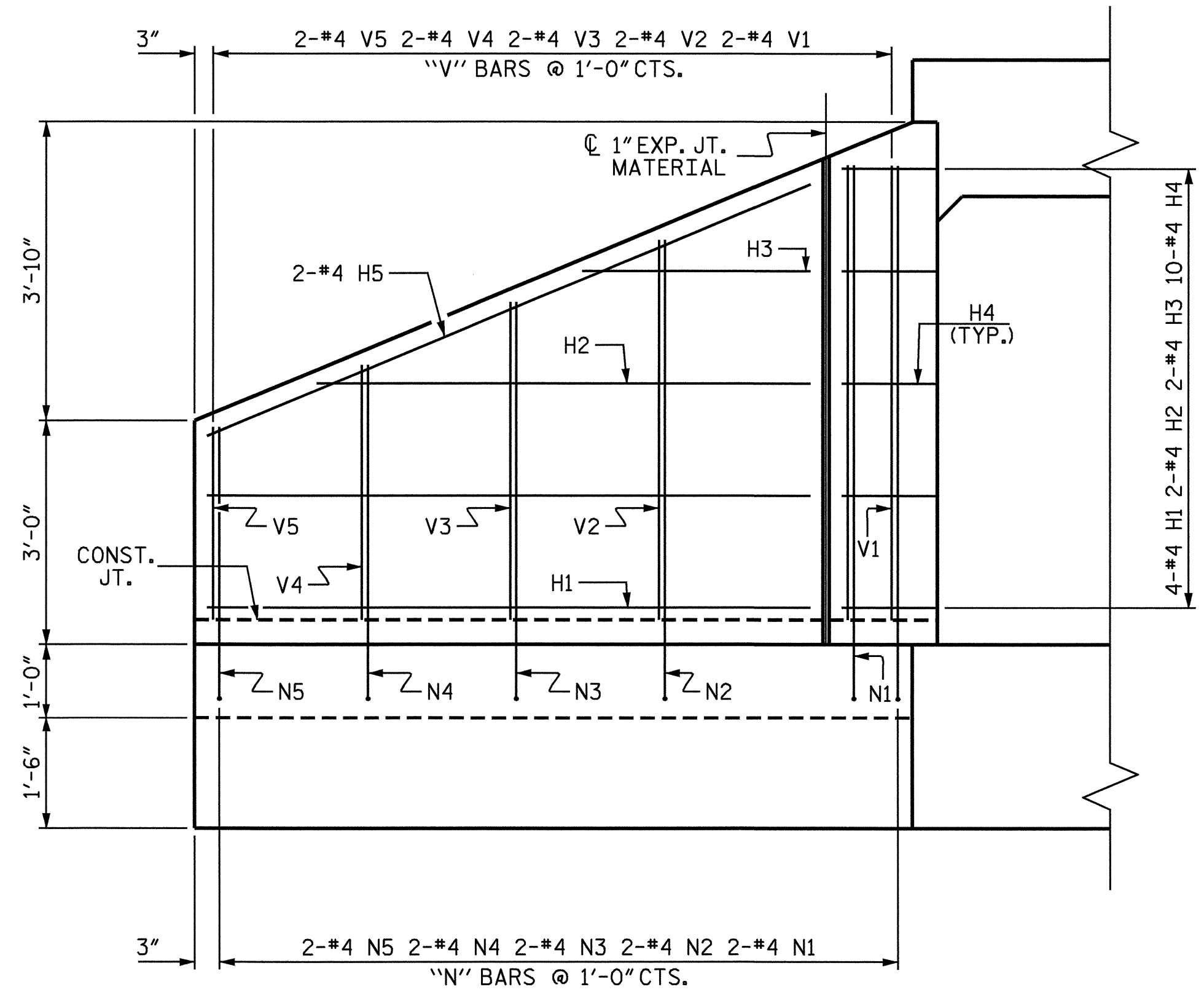
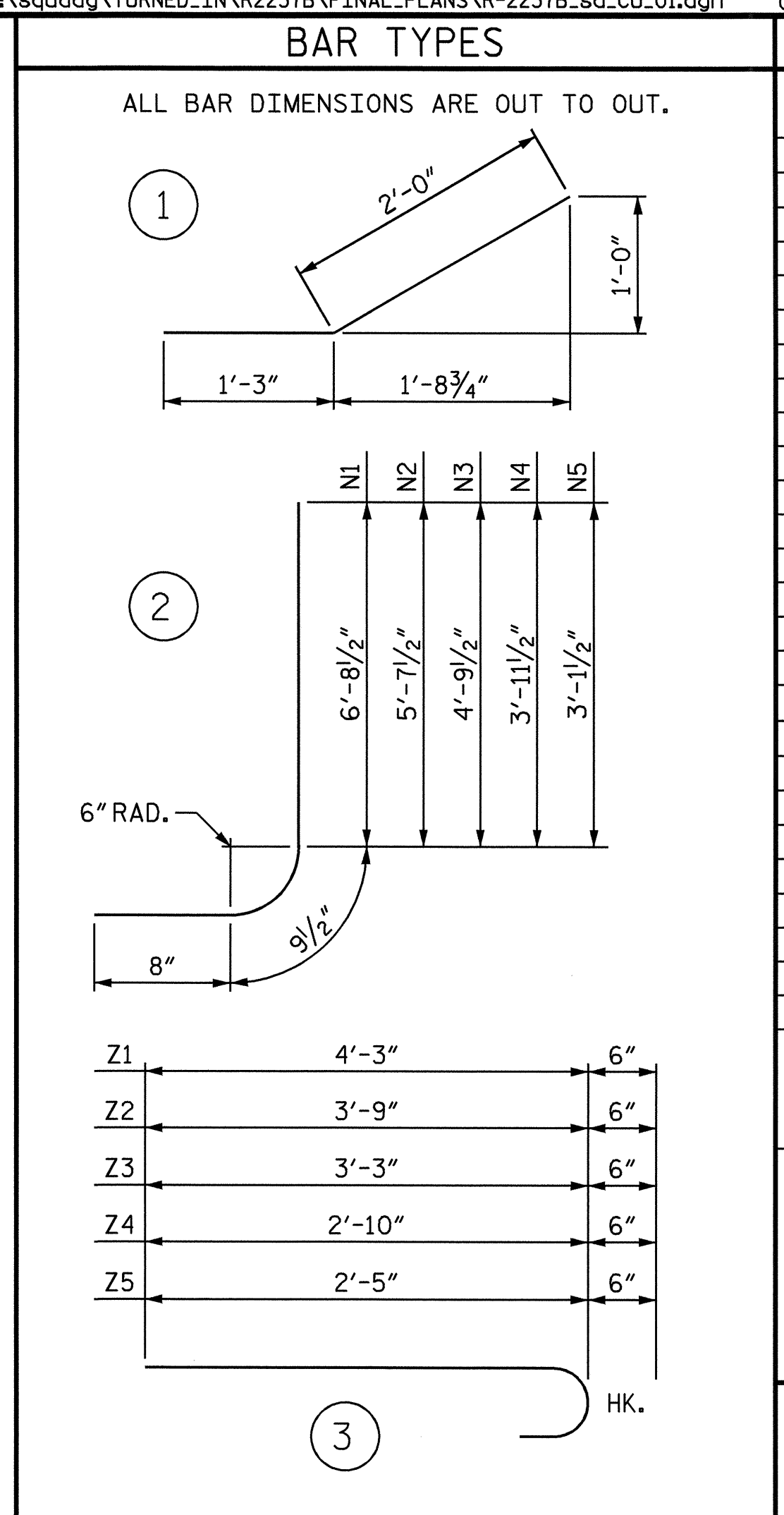


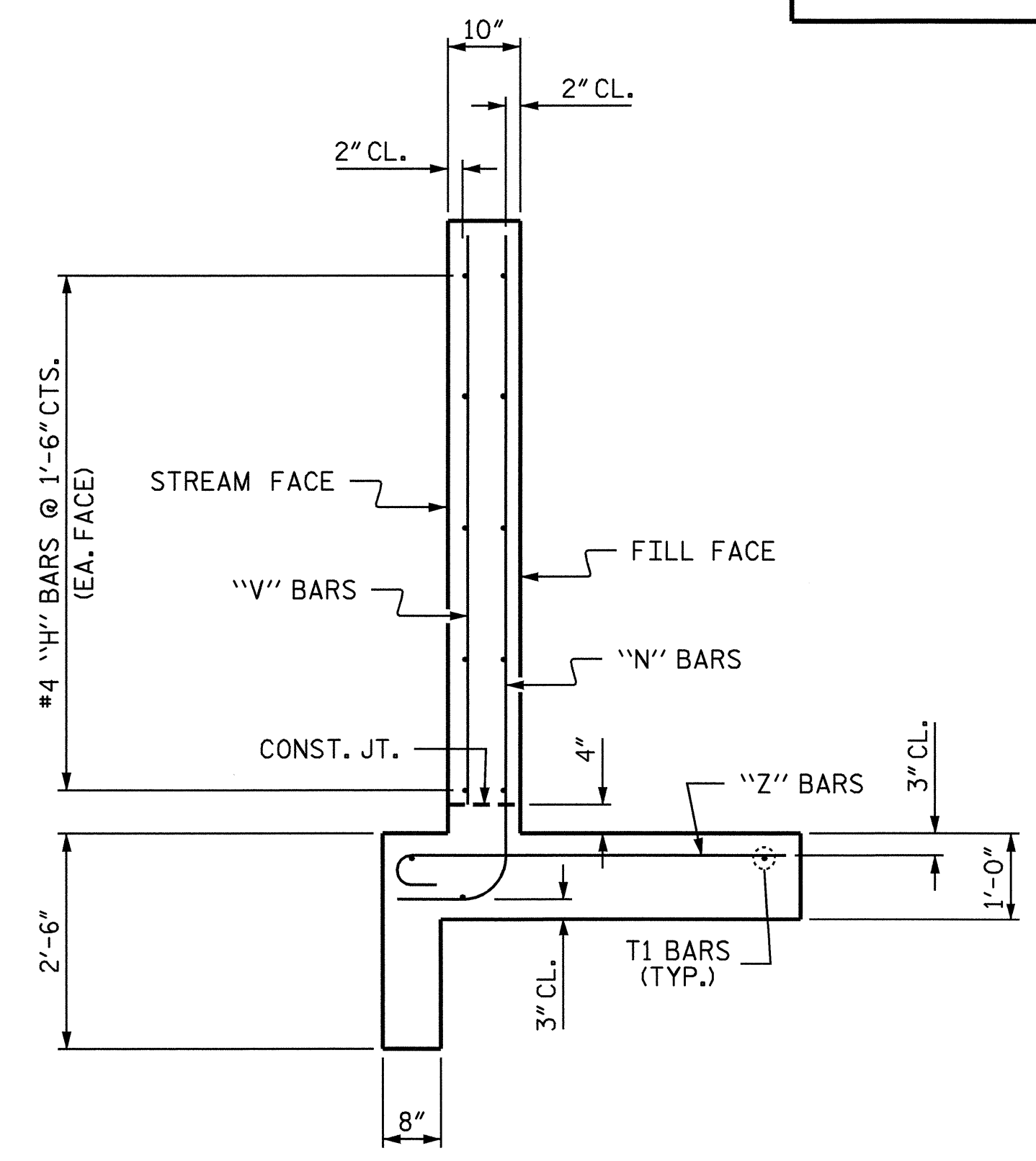
PLAN W1



ELEVATION W1



BILL OF MATERIAL					
RIGHT EXTENSION WING (W1)					
BAR	NO.	SIZE	TYPE	LENGTH	WEIGHT
H1	4	#4	STR	8'-1"	22
H2	2	#4	STR	6'-8"	9
H3	2	#4	STR	3'-1"	4
H4	10	#4	1	3'-3"	22
H5	2	#4	STR	8'-9"	12
N1	2	#4	2	8'-2"	11
N2	2	#4	2	7'-1"	9
N3	2	#4	2	6'-3"	8
N4	2	#4	2	5'-5"	7
N5	2	#4	2	4'-7"	6
T1	3	#5	STR	10'-0"	31
V1	2	#4	STR	6'-1"	8
V2	2	#4	STR	5'-1"	7
V3	2	#4	STR	4'-3"	6
V4	2	#4	STR	3'-5"	5
V5	2	#4	STR	2'-7"	3
Z1	2	#4	3	4'-9"	6
Z2	3	#4	3	4'-3"	9
Z3	2	#4	3	3'-9"	5
Z4	2	#4	3	3'-4"	4
Z5	2	#4	3	2'-11"	4
REINFORCING STEEL FOR 1 WING				198	LBS
CLASS A CONCRETE					
1 WING				3.5	CY
1 HEADWALL				0.4	CY
1 END CURTAIN WALL				0.3	CY
2 EDGE BEAMS				1.2	CY
TOTAL				5.4	CY

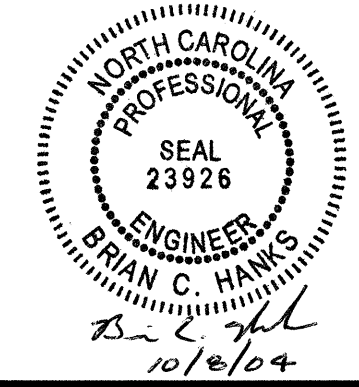


WING SECTION OF W1

PROJECT NO. R-2237B
CALDWELL COUNTY
 STATION: 78+31.75 -L-

SHEET 9 OF 10

STATE OF NORTH CAROLINA
 DEPARTMENT OF TRANSPORTATION
 RALEIGH
STANDARD WING FOR CONCRETE BOX CULVERT
 H = 6'-0" SLOPE = 2:1
 90° SKEW



REVISIONS						SHEET NO.	
NO.	BY:	DATE:	NO.	BY:	DATE:	C-9	
1			3			TOTAL SHEETS	
2			4			19	

ASSEMBLED BY : J.L. WALTON DATE : 5/26/04
 CHECKED BY : K.K. PUROHIT DATE : 7/30/04
 DRAWN BY : CCJ 10/99
 CHECKED BY : RWW 03/00