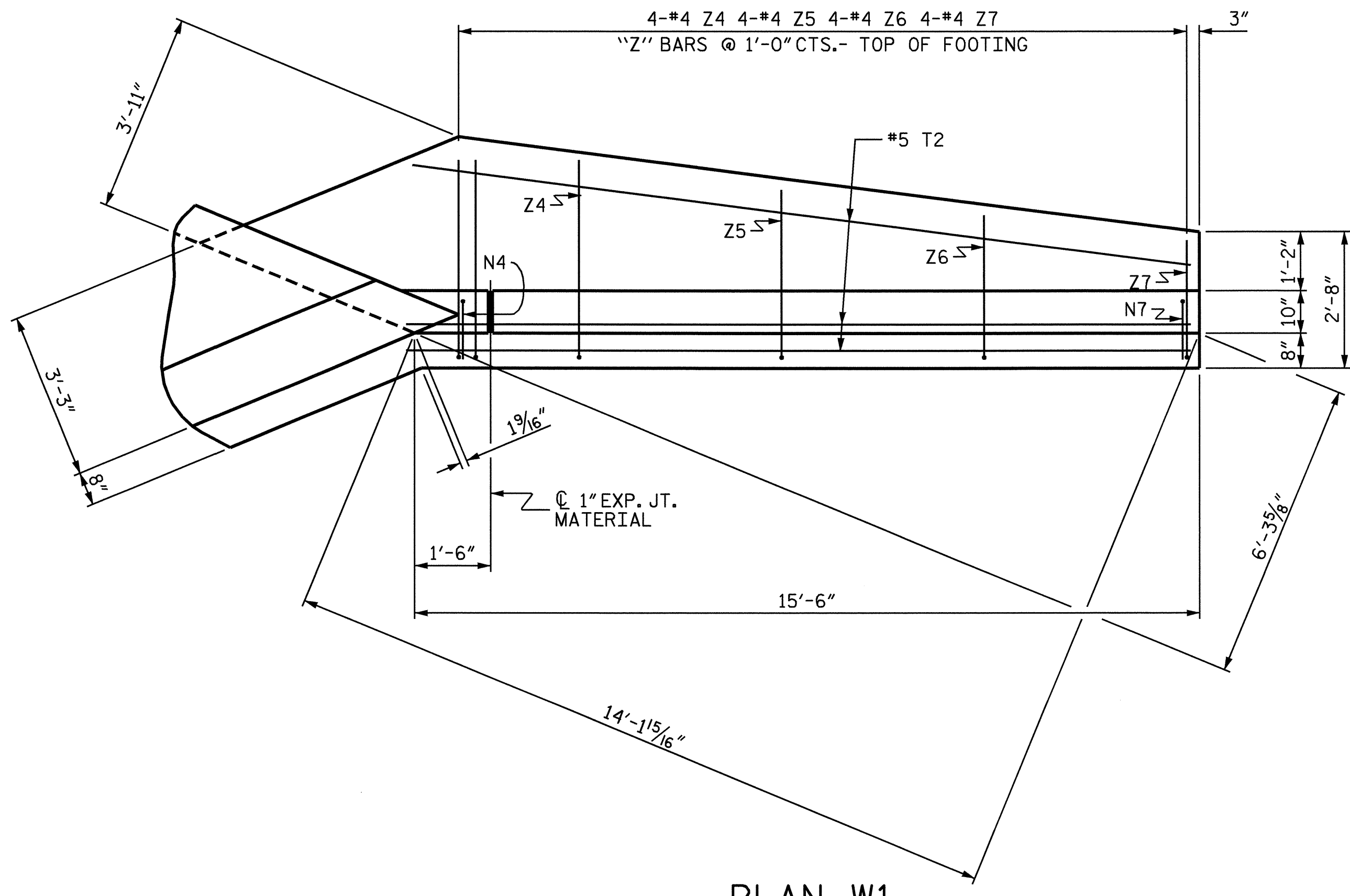
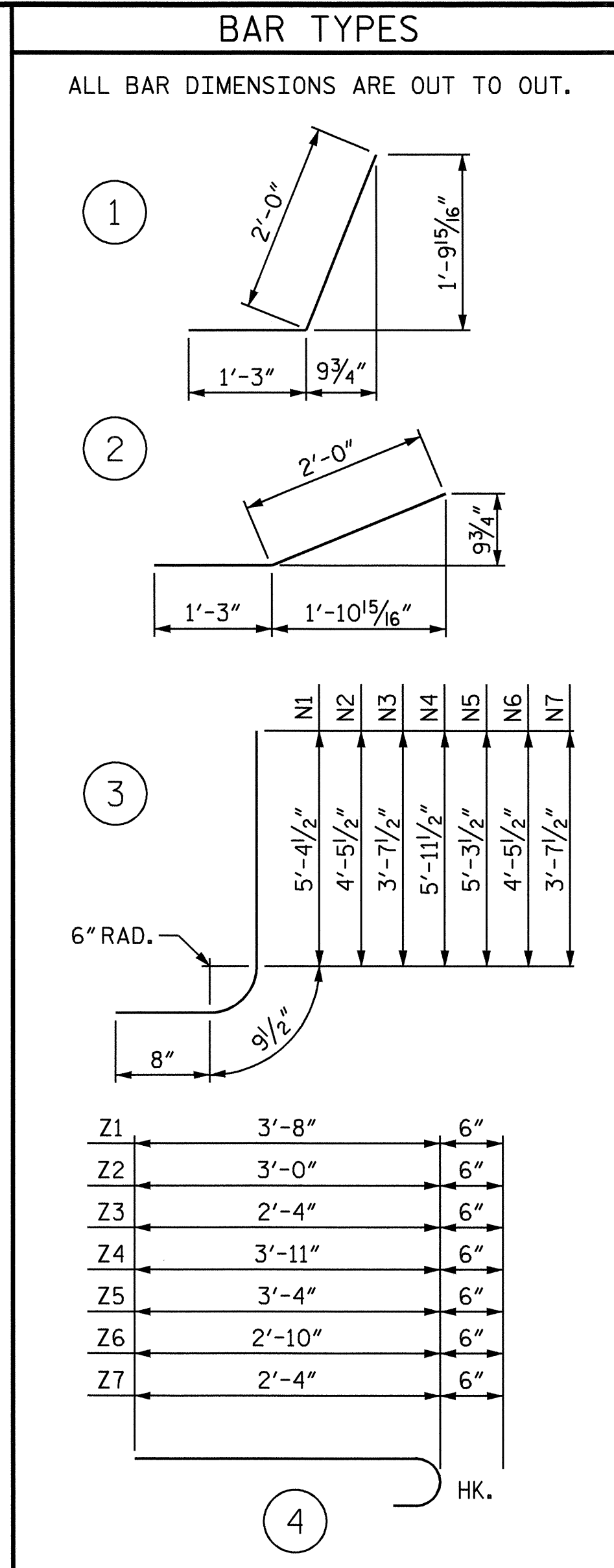


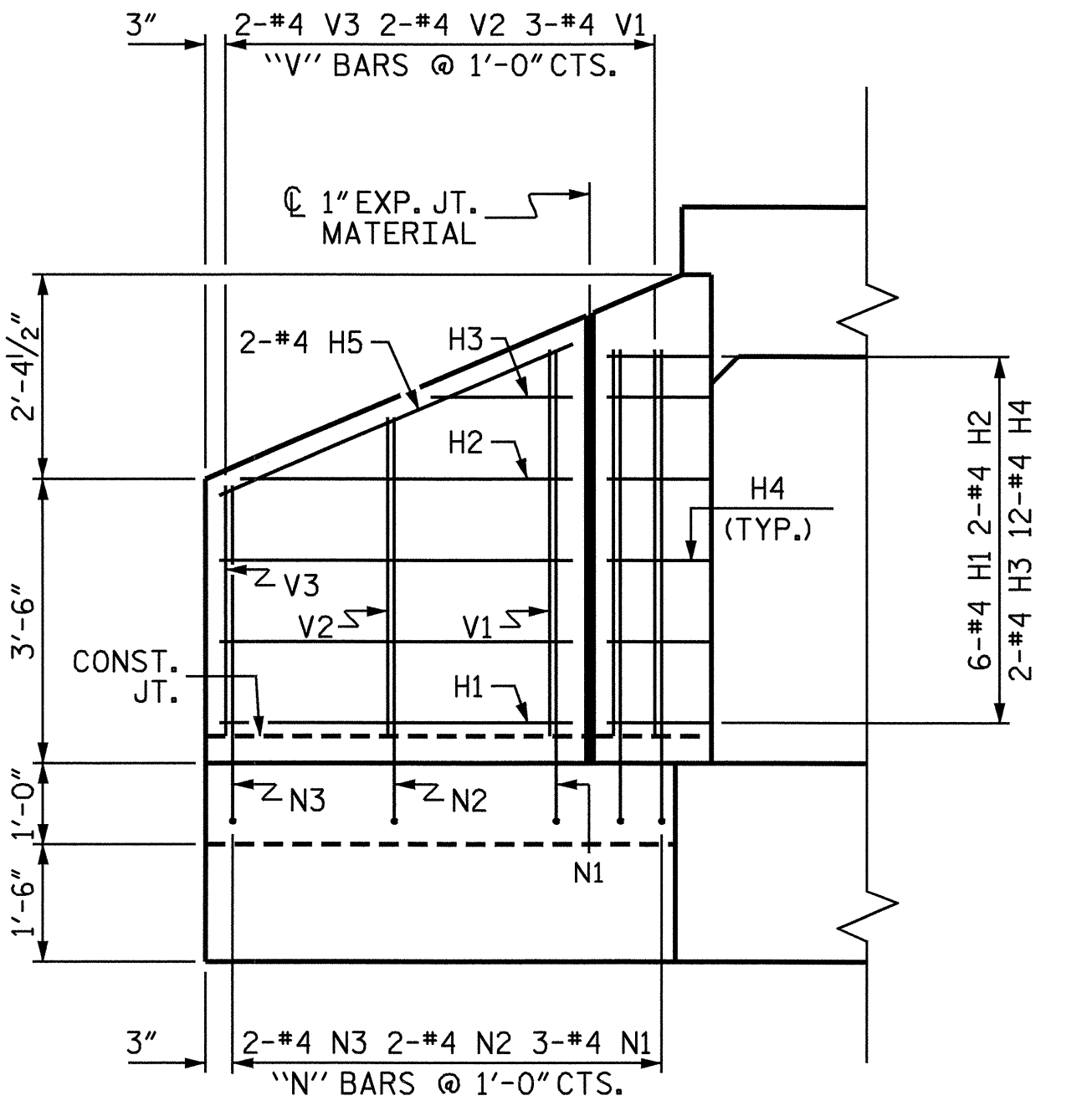
PLAN W2



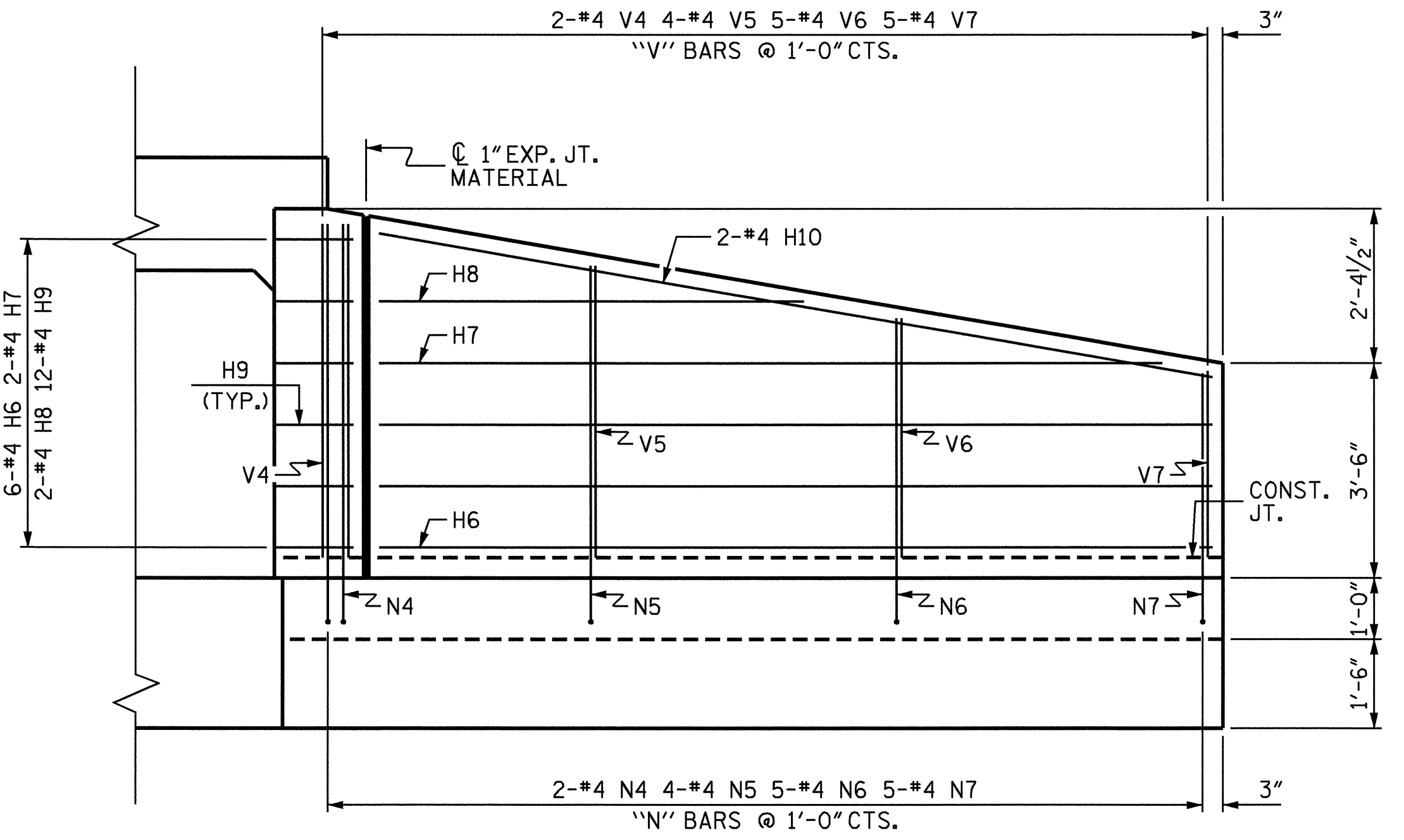
PLAN W1



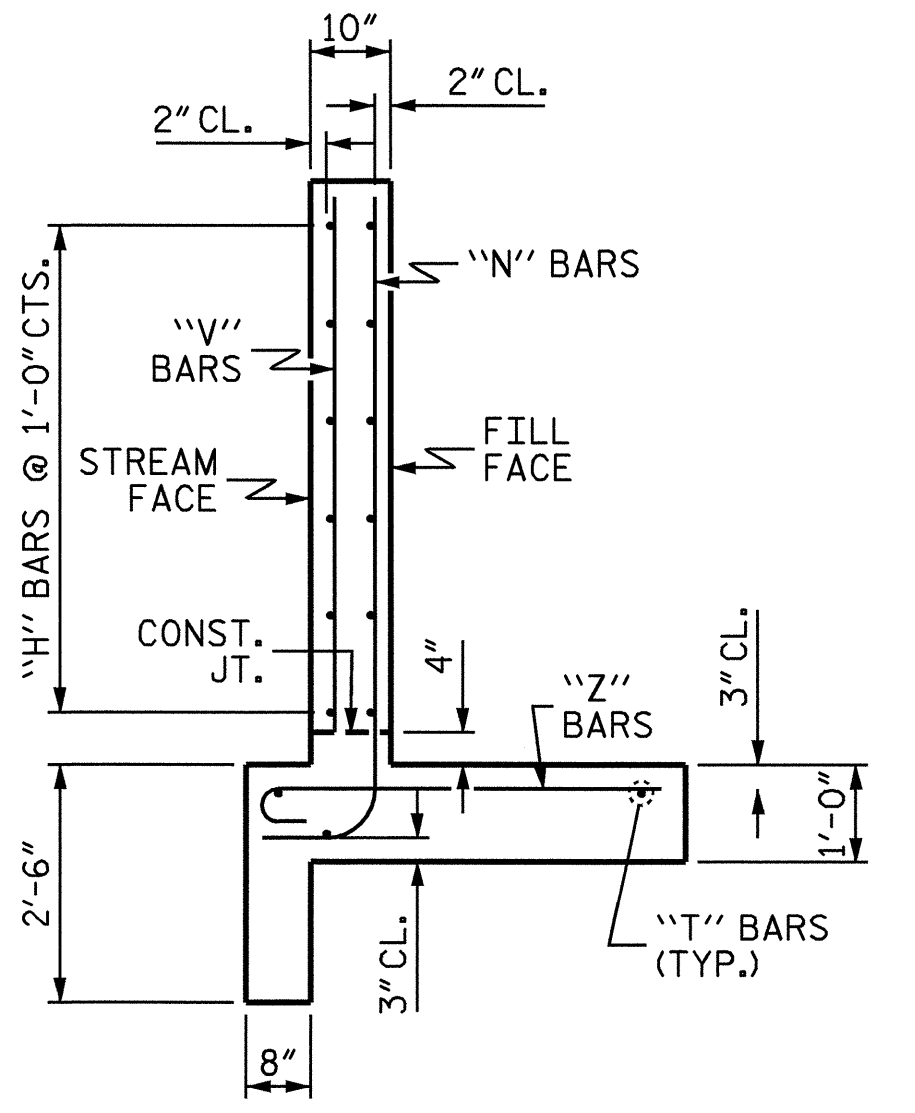
BILL OF MATERIAL					
RIGHT EXTENSION WINGS					
BAR	NO.	SIZE	TYPE	LENGTH	WEIGHT
H1	6	#4	STR	4'-4"	17
H2	2	#4	STR	4'-1"	5
H3	2	#4	STR	1'-9"	2
H4	12	#4	1	3'-3"	26
H5	2	#4	STR	4'-9"	6
H6	6	#4	STR	13'-7"	54
H7	2	#4	STR	12'-9"	17
H8	2	#4	STR	6'-11"	9
H9	12	#4	2	3'-3"	26
H10	2	#4	STR	13'-9"	18
N1	3	#4	3	6'-10"	14
N2	2	#4	3	5'-11"	8
N3	2	#4	3	5'-1"	7
N4	2	#4	3	7'-5"	10
N5	4	#4	3	6'-9"	18
N6	5	#4	3	5'-11"	20
N7	5	#4	3	5'-1"	17
T1	3	#5	STR	6'-3"	20
T2	3	#5	STR	15'-6"	48
V1	3	#4	STR	4'-9"	10
V2	2	#4	STR	3'-11"	5
V3	2	#4	STR	3'-1"	4
V4	2	#4	STR	5'-5"	7
V5	4	#4	STR	4'-9"	13
V6	5	#4	STR	3'-10"	13
V7	5	#4	STR	3'-0"	10
Z1	3	#4	4	4'-2"	8
Z2	2	#4	4	3'-6"	5
Z3	2	#4	4	2'-10"	4
Z4	4	#4	4	4'-5"	12
Z5	4	#4	4	3'-10"	10
Z6	4	#4	4	3'-4"	9
Z7	4	#4	4	2'-10"	8
REINFORCING STEEL FOR 2 WINGS				460	LBS
CLASS A CONCRETE					
2 WINGS				7.4	CY
1 HEADWALLS				0.6	CY
1 END CURTAIN WALL				0.4	CY
2 EDGE BEAM				0.8	CY
TOTAL				9.2	CY



ELEVATION W2



ELEVATION W1



TYPICAL WING SECTION



PROJECT NO. R-2237B
 CALDWELL COUNTY
 STATION: 82+94.91 -L-
 SHEET 9 OF 9

STATE OF NORTH CAROLINA
 DEPARTMENT OF TRANSPORTATION
 RALEIGH
 STANDARD WINGS FOR
 CONCRETE BOX CULVERT
 132° SKEW
 RIGHT EXTENSION

ASSEMBLED BY : J.L. WALTON DATE : 4/13/04
 CHECKED BY : K.K. PUROHIT DATE : 7/22/04
 DRAWN BY : CCJ 01/00
 CHECKED BY : RWW 03/00

REVISIONS						SHEET NO.	
NO.	BY:	DATE:	NO.	BY:	DATE:	C-19	
1			3			TOTAL SHEETS	19
2			4				