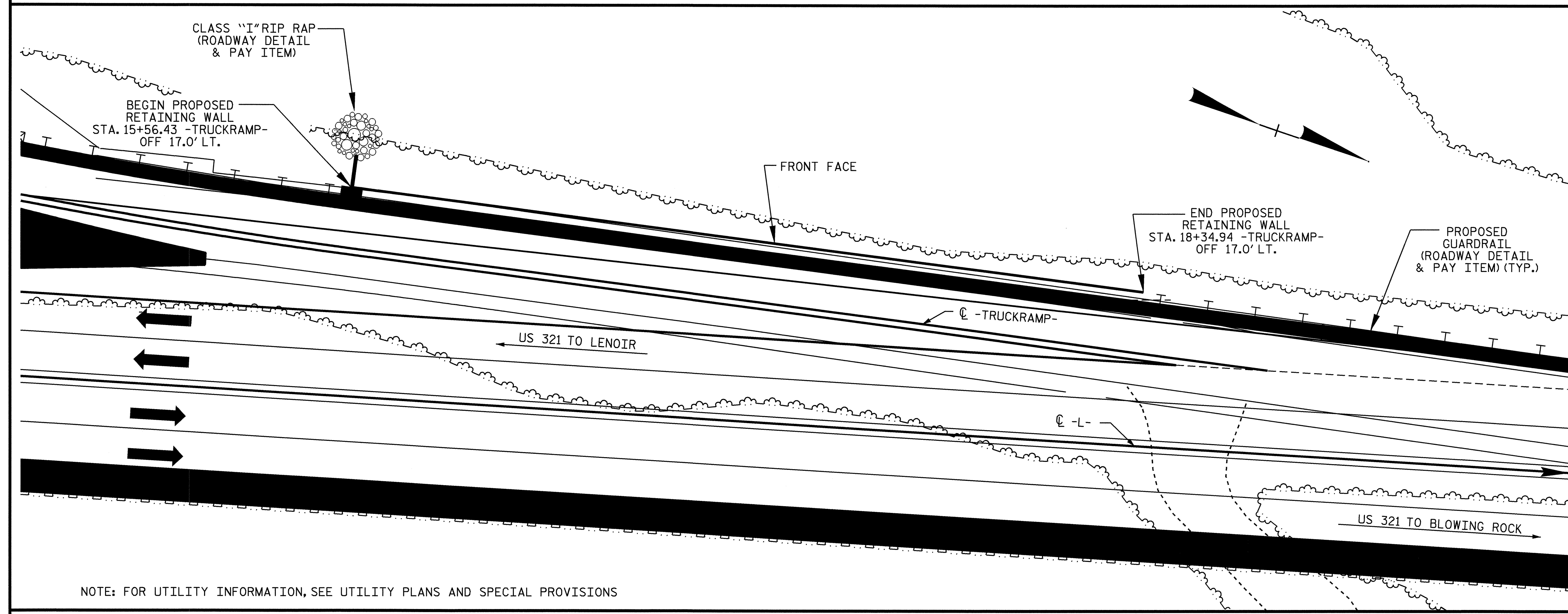


BM #3 RR SPIKE IN BASE OF A 16" YELLOW POPLAR TREE 34.29' LEFT OF -L- STA. 58+76.85 EL. 1708.85

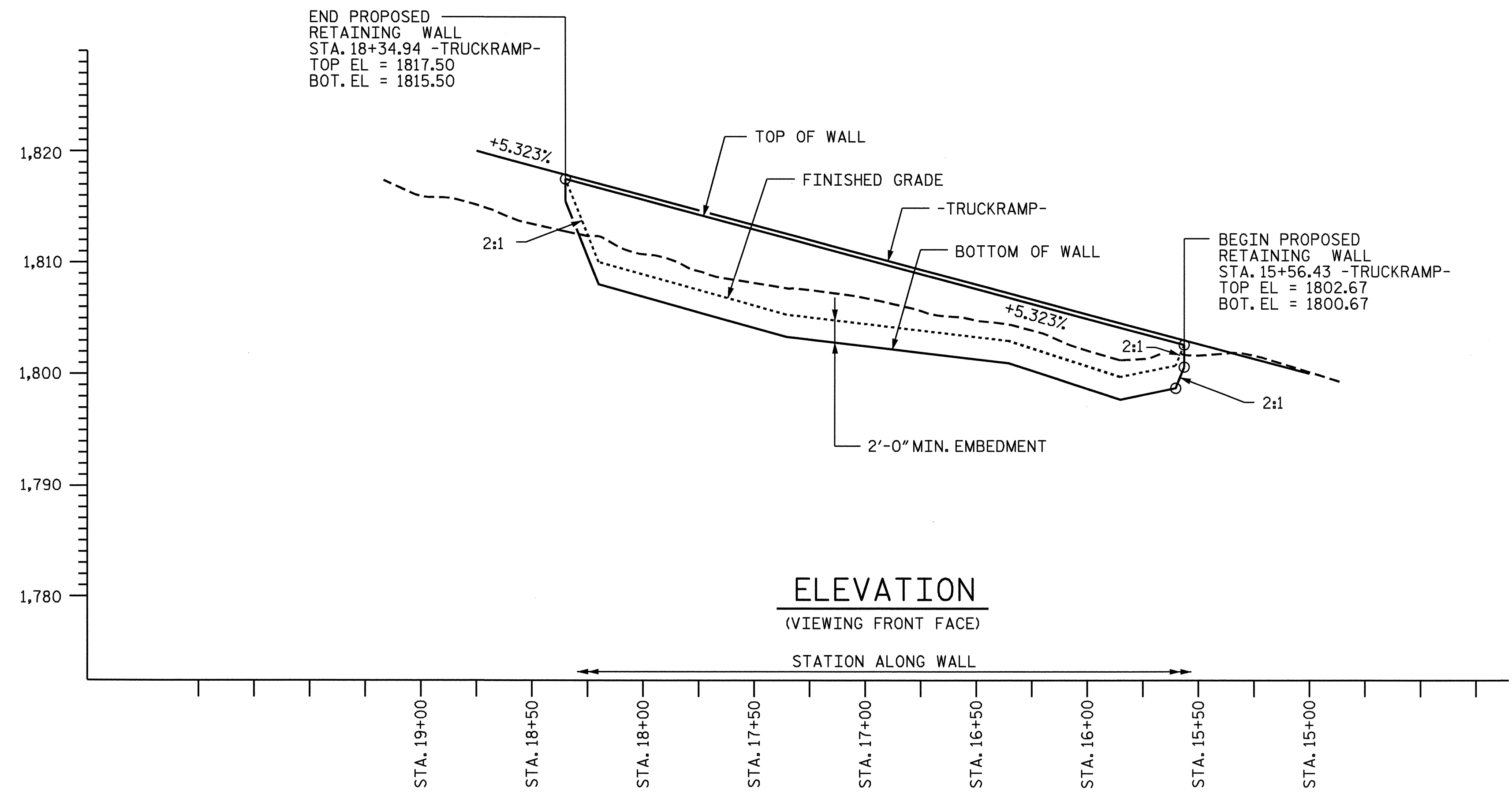
F. A. PROJECT NO. : NHF-321(12)



RETAINING WALL ELEVATIONS					
TRUCKRAMP-STA	OFFSET FROM CL	ELEV @ TOP OF WALL	ELEV @ BOTTOM OF WALL	ELEV @ FINISHED GRADE	WALL HEIGHT
15+56.43	17.000	1802.67	1800.67	1802.67	2.00
15+60.22	17.000	1802.87	1798.78	1800.78	4.09
15+85.00	17.000	1804.19	1797.76	1799.76	6.43
16+35.34	17.000	1806.87	1801.01	1803.01	5.86
17+35.59	17.000	1812.21	1803.36	1805.36	8.85
18+20.00	17.000	1816.70	1808.03	1810.03	8.67
18+34.94	17.000	1817.50	1815.50	1817.50	2.00

LOCATION SKETCH

TOTAL BILL OF MATERIAL	
MSE RETAINING WALL AT STA. 15+56.43 -TRUCKRAMP-	LUMP SUM

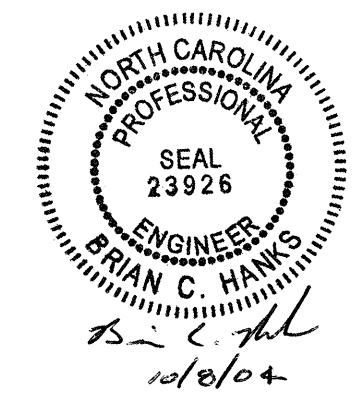


PROJECT NO. R-2237B
CALDWELL COUNTY
 STATION: 15+56.43
-TRUCKRAMP-
 SHEET 1 OF 2

STATE OF NORTH CAROLINA
 DEPARTMENT OF TRANSPORTATION
 RALEIGH

MSE RETAINING WALL DETAILS

REVISIONS						SHEET NO.
NO.	BY:	DATE:	NO.	BY:	DATE:	W-1
1			3			TOTAL SHEETS
2			4			20



DRAWN BY : D. G. ELY DATE : 8/23/04
 CHECKED BY : B. C. HANKS DATE : 9/13/04

07-OCT-2004 16:09
 W:\squadg\TURNED_IN\R2237B\FINAL_PLANS\Walls\R2237b_sd_wall1.dgn
 wparker