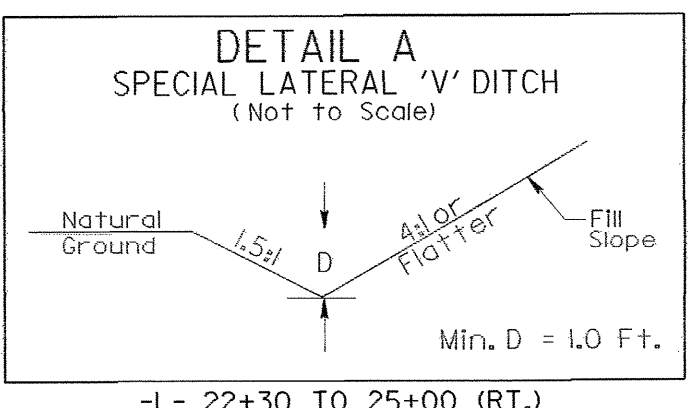
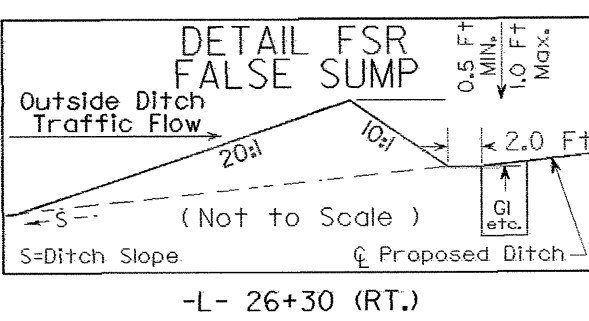
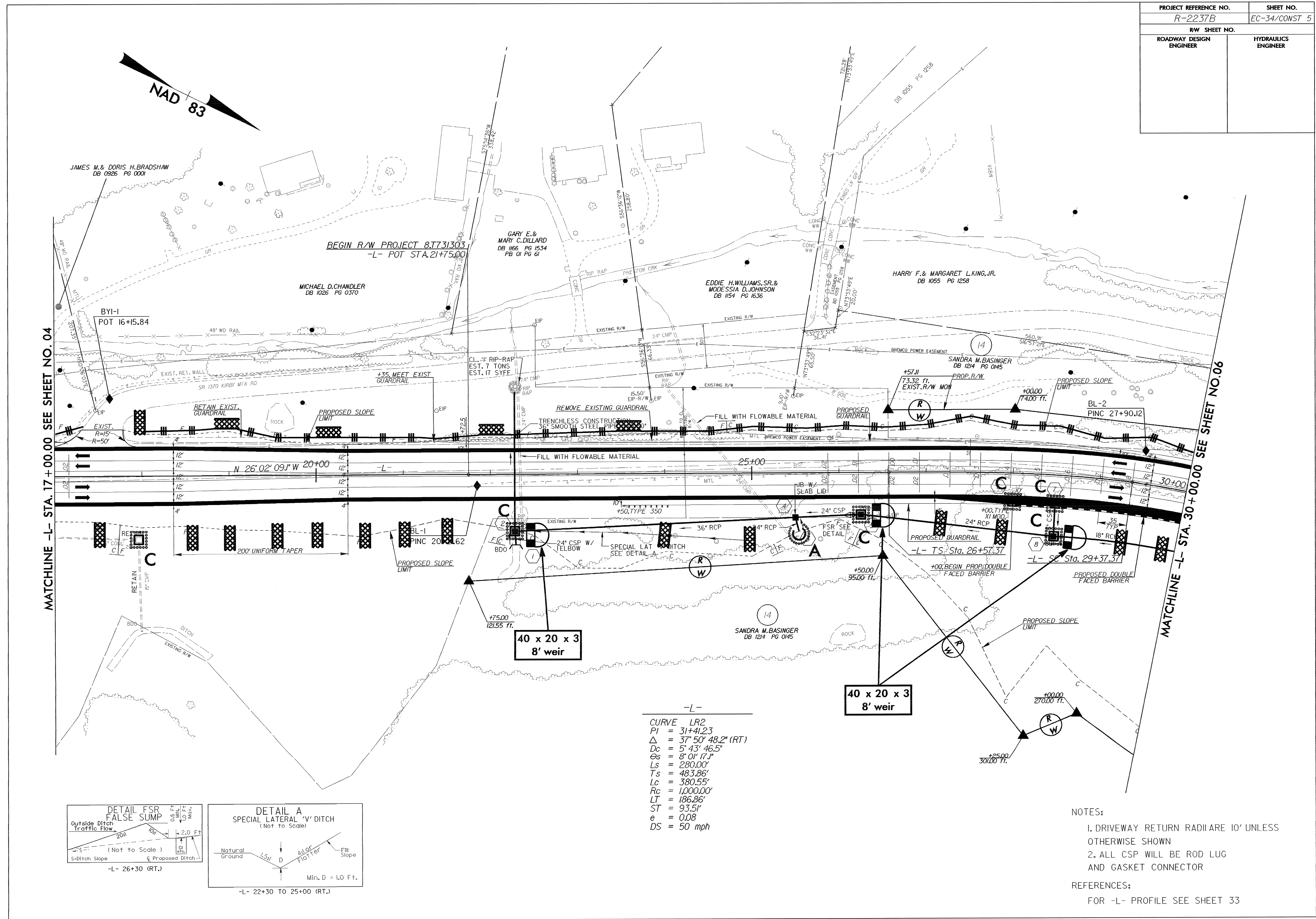


PROJECT REFERENCE NO.		SHEET NO.	
R-2237B		EC-34/CONST 5	
RW SHEET NO.			
ROADWAY DESIGN ENGINEER		HYDRAULICS ENGINEER	



-L-

CURVE LR2
 PI = 31+41.23
 $\Delta = 37^\circ 50' 48.2''$ (RT)
 Dc = 5' 43' 46.5"
 Es = 8' 01' 17.1"
 Ls = 280.00'
 Ts = 483.86'
 Lc = 380.55'
 Rc = 1,000.00'
 LT = 186.86'
 ST = 93.51'
 e = 0.08
 DS = 50 mph

NOTES:

- DRIVEWAY RETURN RADII ARE 10' UNLESS OTHERWISE SHOWN
- ALL CSP WILL BE ROD LUG AND GASKET CONNECTOR

REFERENCES:
 FOR -L- PROFILE SEE SHEET 33