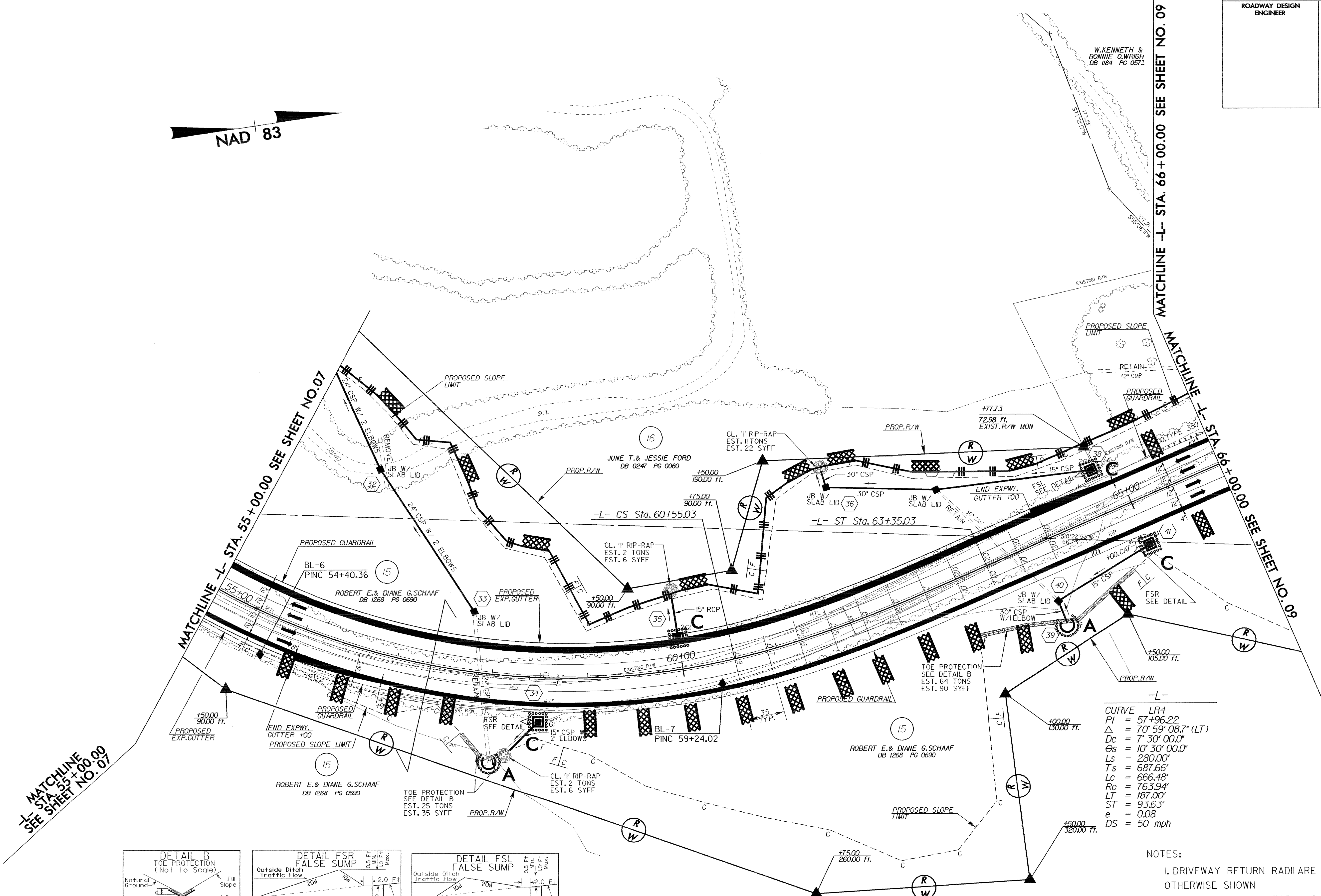
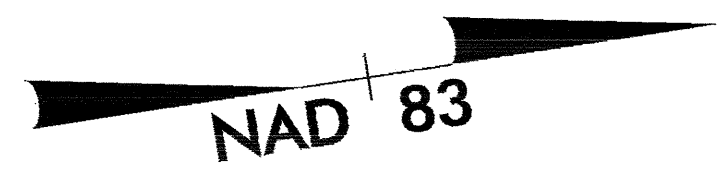


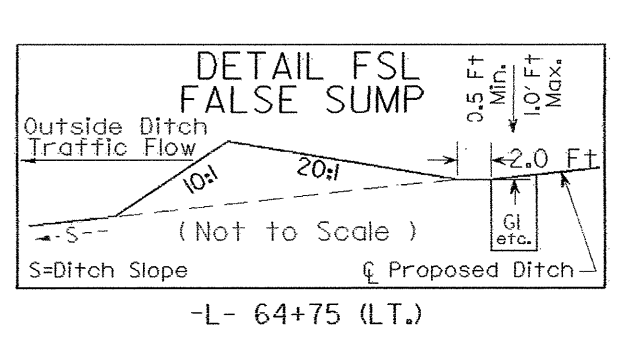
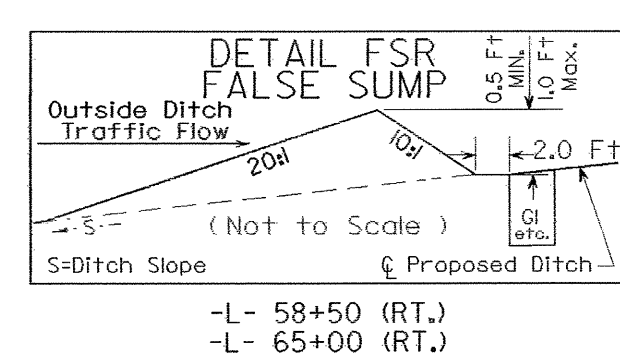
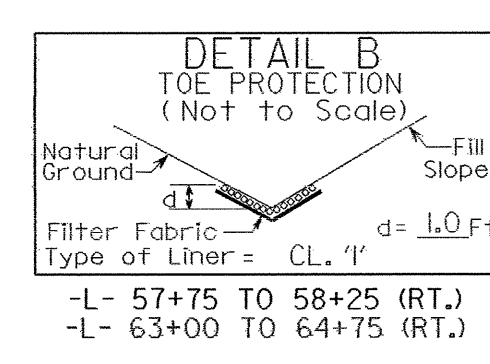
PROJECT REFERENCE NO. R-2237B	SHEET NO. EC-37/CONST 8
RW SHEET NO.	
ROADWAY DESIGN ENGINEER	HYDRAULICS ENGINEER



MATCHLINE -L- STA. 55+00.00 SEE SHEET NO. 07

MATCHLINE -L- STA. 66+00.00 SEE SHEET NO. 09

-L-  
CURVE LR4  
PI = 57+96.22  
Δ = 70° 59' 08.7" (LT)  
Dc = 7' 30" 00.0"  
Os = 10' 30" 00.0"  
Ls = 280.00'  
Ts = 687.66'  
Lc = 666.48'  
Rc = 763.94'  
LT = 187.00'  
ST = 93.63'  
e = 0.08  
DS = 50 mph



- NOTES:
- DRIVEWAY RETURN RADII ARE 10' UNLESS OTHERWISE SHOWN
  - ALL CSP WILL BE ROD LUG AND GASKET CONNECTOR

REFERENCES:  
FOR -L- PROFILE SEE SHEET 36