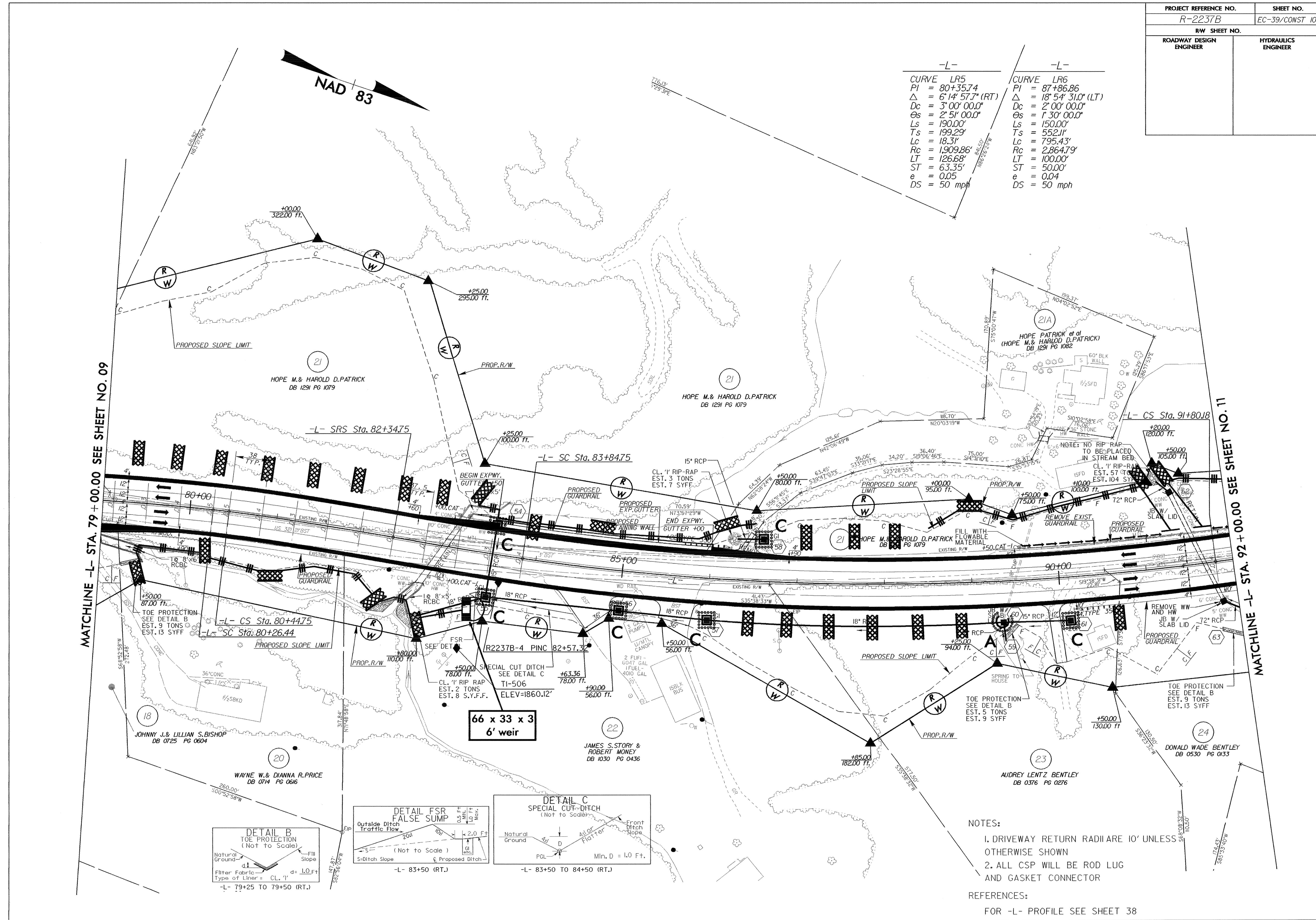
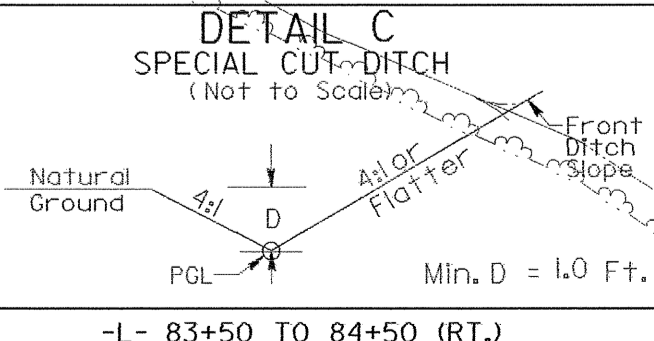
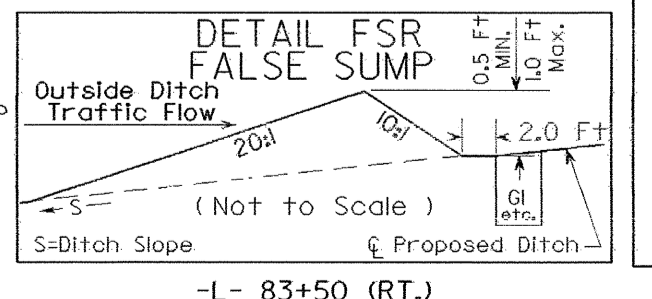
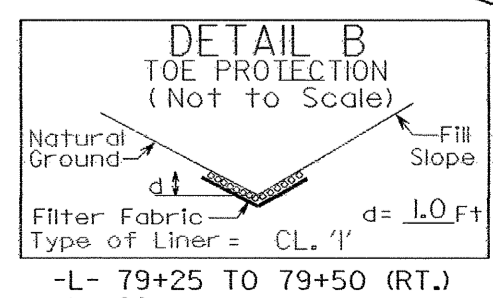


| -L-   |                     | -L-   |                      |
|-------|---------------------|-------|----------------------|
| CURVE | LR5                 | CURVE | LR6                  |
| PI    | = 80+35.74          | PI    | = 87+86.86           |
| Δ     | = 6° 14' 57.7" (RT) | Δ     | = 18° 54' 31.0" (LT) |
| Dc    | = 3° 00' 00.0"      | Dc    | = 2° 00' 00.0"       |
| Os    | = 2° 51' 00.0"      | Os    | = 1° 30' 00.0"       |
| Ls    | = 190.00'           | Ls    | = 150.00'            |
| Ts    | = 199.29'           | Ts    | = 552.11'            |
| Lc    | = 18.31'            | Lc    | = 795.43'            |
| Rc    | = 1,909.86'         | Rc    | = 2,864.79'          |
| LT    | = 126.68'           | LT    | = 100.00'            |
| ST    | = 63.35'            | ST    | = 50.00'             |
| e     | = 0.05              | e     | = 0.04               |
| DS    | = 50 mph            | DS    | = 50 mph             |



MATCHLINE -L- STA. 79 + 00.00 SEE SHEET NO. 09

MATCHLINE -L- STA. 92 + 00.00 SEE SHEET NO. 11



- NOTES:
- DRIVEWAY RETURN RADIARE 10' UNLESS OTHERWISE SHOWN
  - ALL CSP WILL BE ROD LUG AND GASKET CONNECTOR

REFERENCES:  
FOR -L- PROFILE SEE SHEET 38